



CalSavers Retirement Savings Program Participation & Funding Snapshot as of 4/30/2024

Employer Registration Status Changes

Employer Status	4/30/2024	1/31/2024	Change	Percentage Change
Registered	134,255	133,569	686	0.5%
Uploaded Roster	121,139	119,245	1,894	1.6%
Started Payroll Deductions	50,943	48,172	2,771	5.8%
Facilitated Deductions in last 90 days	38,917	38,040	877	2.3%
Exempt	128,557	126,767	1,790	1.4%

Participant Savings and Enrollment Changes

Participant Account Status	4/30/2024	1/31/2024	Change	Percentage Change
Funded Accounts	505,283	484,859	20,424	4.2%
Payroll Contributing Accounts	561,233	536,497	24,736	4.6%
Multiple Employer Accounts*	79,821	74,969	4,852	6.5%
Self-Enrolled Funded Accounts	2,430	1,768	662	37.4%
Effective Opt-Out Rate	36.25%	36.83%	-0.58%	-1.6%

Status of Eligible Employers by Wave

Wave (Deadline)	Employers Registered	Employers Exempted	Total Employers Responded	Total Estimated Eligible Employers	Employer Response Rate
Post-Deadline Employers	131,618	118,878	250,496	281,817	88.9%
Wave 2024 (12/31/24)	16	3	19	N/A	N/A
Wave 4 (12/31/25)	2,621	9,755	12,376	N/A	N/A
Total	134,255	128,636	262,891	281,817	93.3%

* This data point reflects the number of funded account holders associated with more than one registered employer

** Withdrawal Rate is calculated as Accounts with a full withdrawal as a percent of Payroll Contributing Accounts

Funding Amounts and Withdrawals

Funding Amounts	4/30/2024	1/31/2024	Change	Percentage Change
Total Assets	\$858,491,021	\$765,695,409	\$92,795,612	12.1%
Average Funded Account Balance	\$1,699	\$1,579	\$120	7.6%
Total Contributions Amount	\$1,005,872,133	\$899,209,451	\$106,662,682	11.9%
Average Monthly Contribution Amount	\$204	\$190	\$14	7.4%
Median Monthly Contribution Amount	\$154	\$144	\$10	6.9%
Average Contribution Rate	5.21%	5.22%	-0.01%	-0.2%
Amount of Withdrawals	\$215,550,896	\$180,232,294	\$35,318,602	19.6%
Accounts with a Full Withdrawal	116,778	106,689	10,089	9.5%
Accounts with a Partial Withdrawal	17,998	15,769	2,229	14.1%
Withdrawal Rate**	20.81%	19.89%	0.92%	4.6%

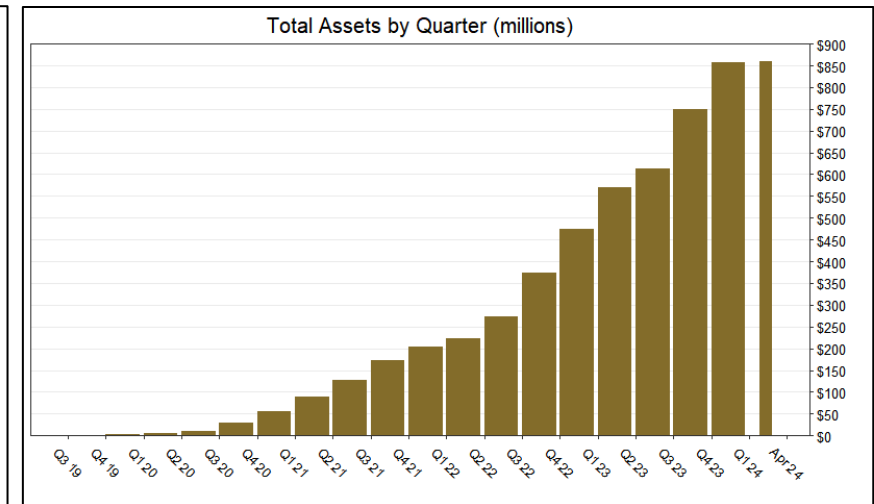
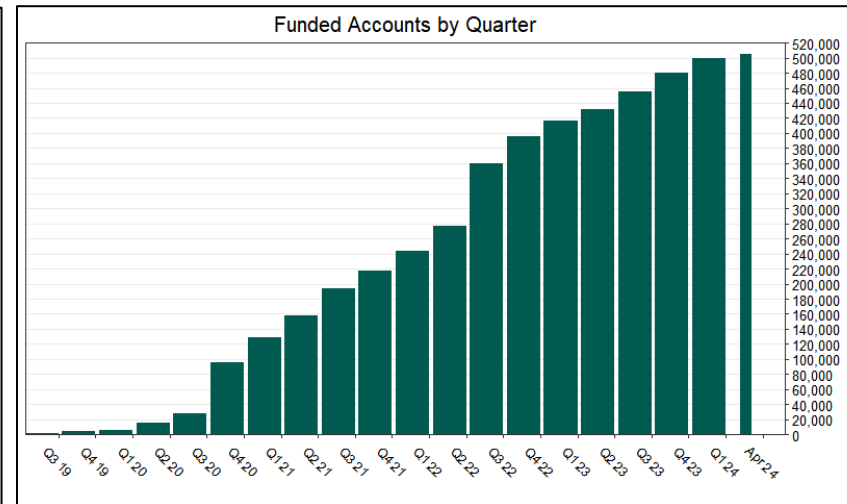
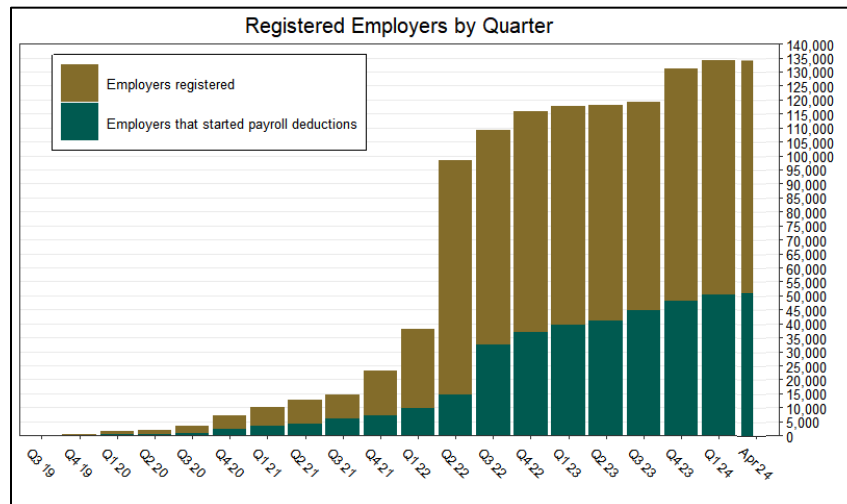
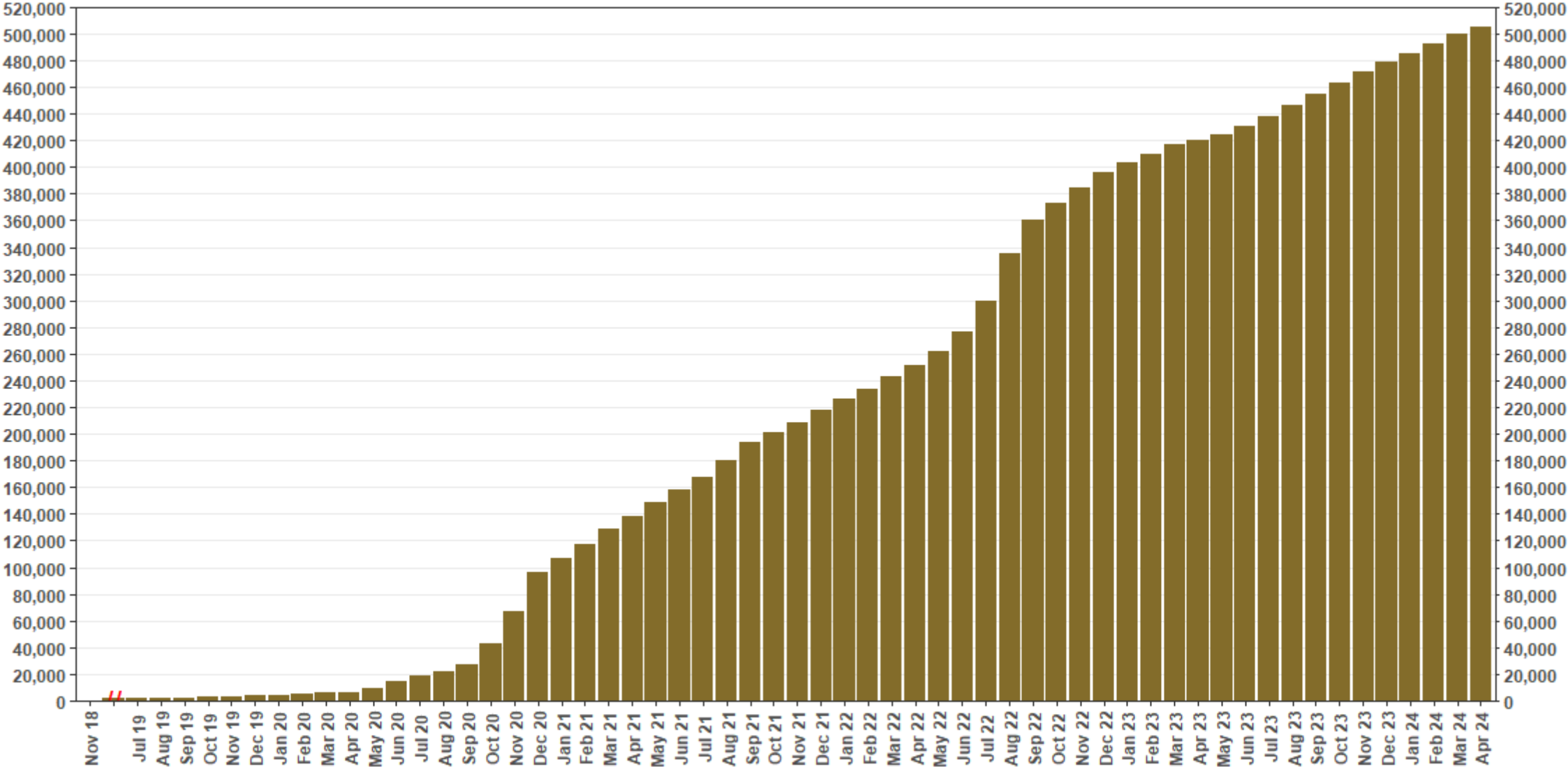


Chart 1: Funded Accounts

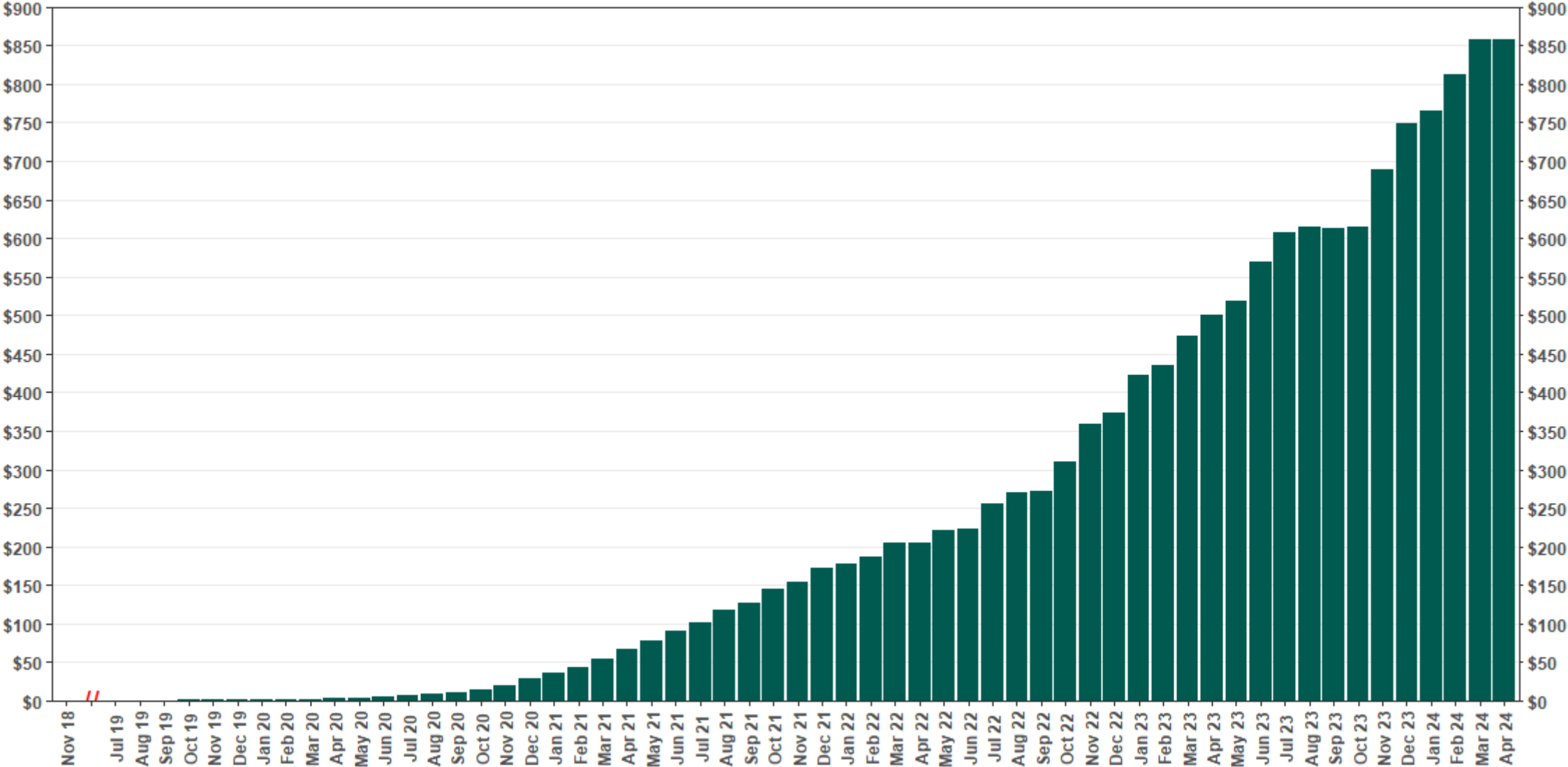
As of 4/30/24



The Program operated a limited scope pilot from November 2018 through June 2019 prior to full statewide launch on July 1, 2019.

Chart 2: Total Assets (millions)

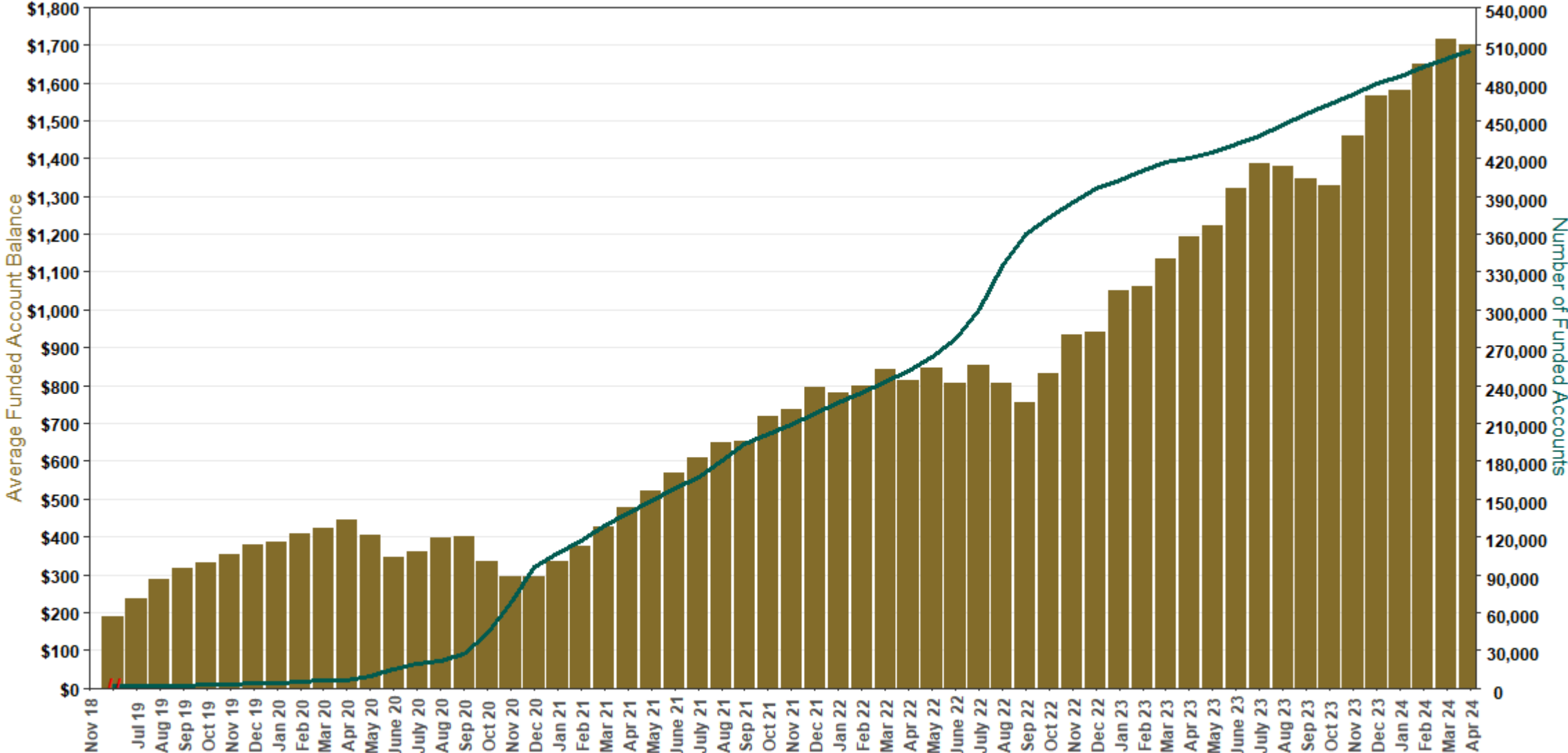
As of 4/30/24



The Program operated a limited scope pilot from November 2018 through June 2019 prior to full statewide launch on July 1, 2019.

Chart 3: Average Funded Account Balance

As of 4/30/24



The Program operated a limited scope pilot from November 2018 through June 2019 prior to full statewide launch on July 1, 2019.

Chart 4: Distribution of Accounts by Balance

As of 4/30/24

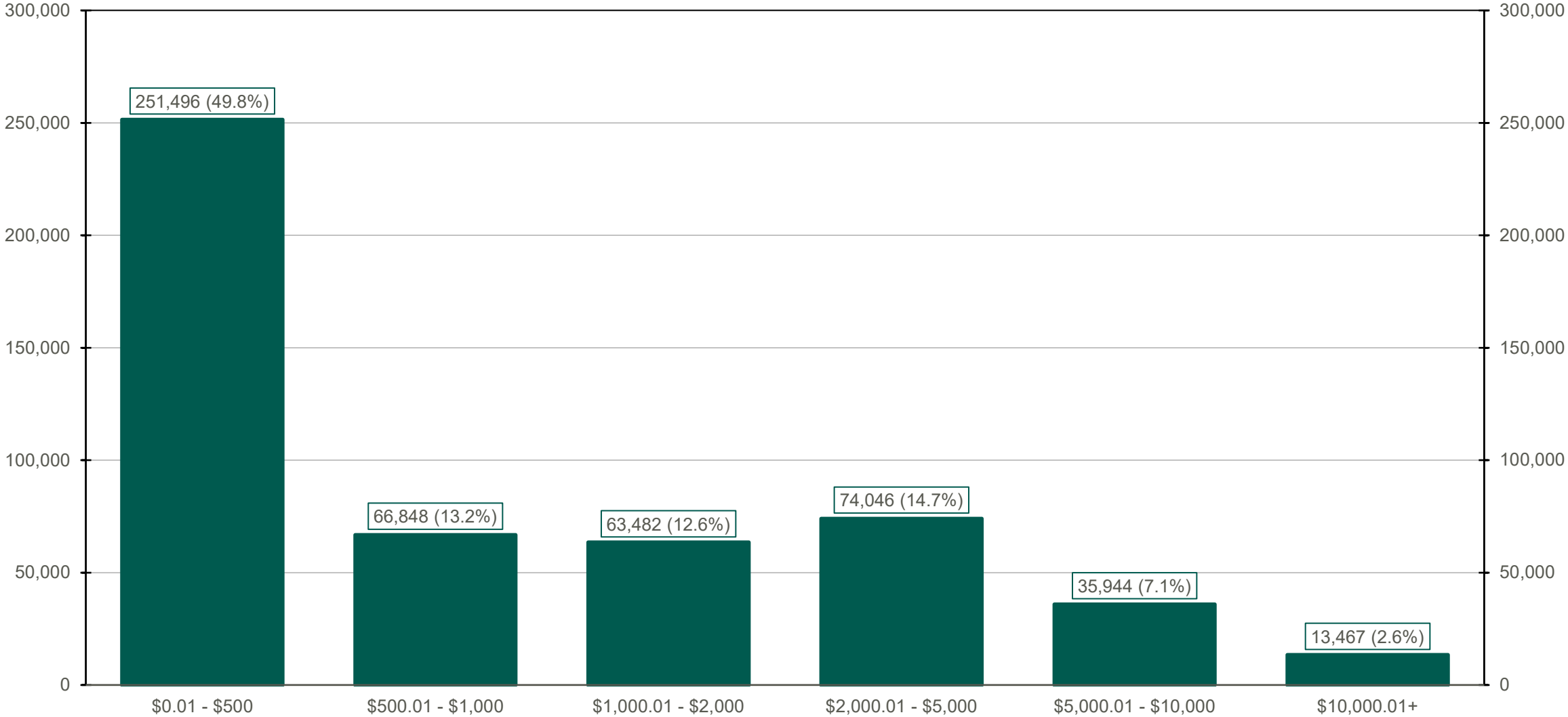
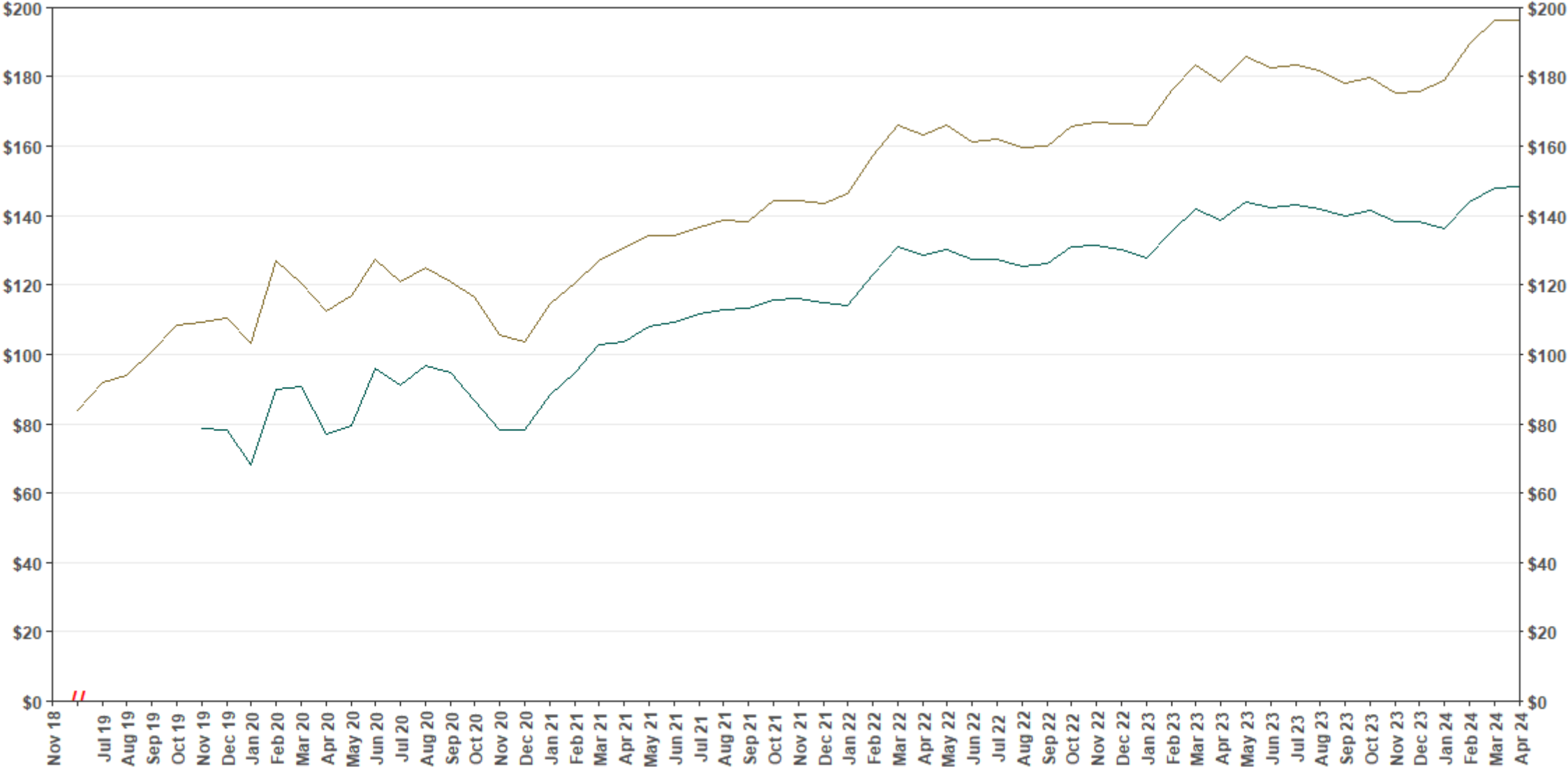


Chart 5: Monthly Contributions Per Saver

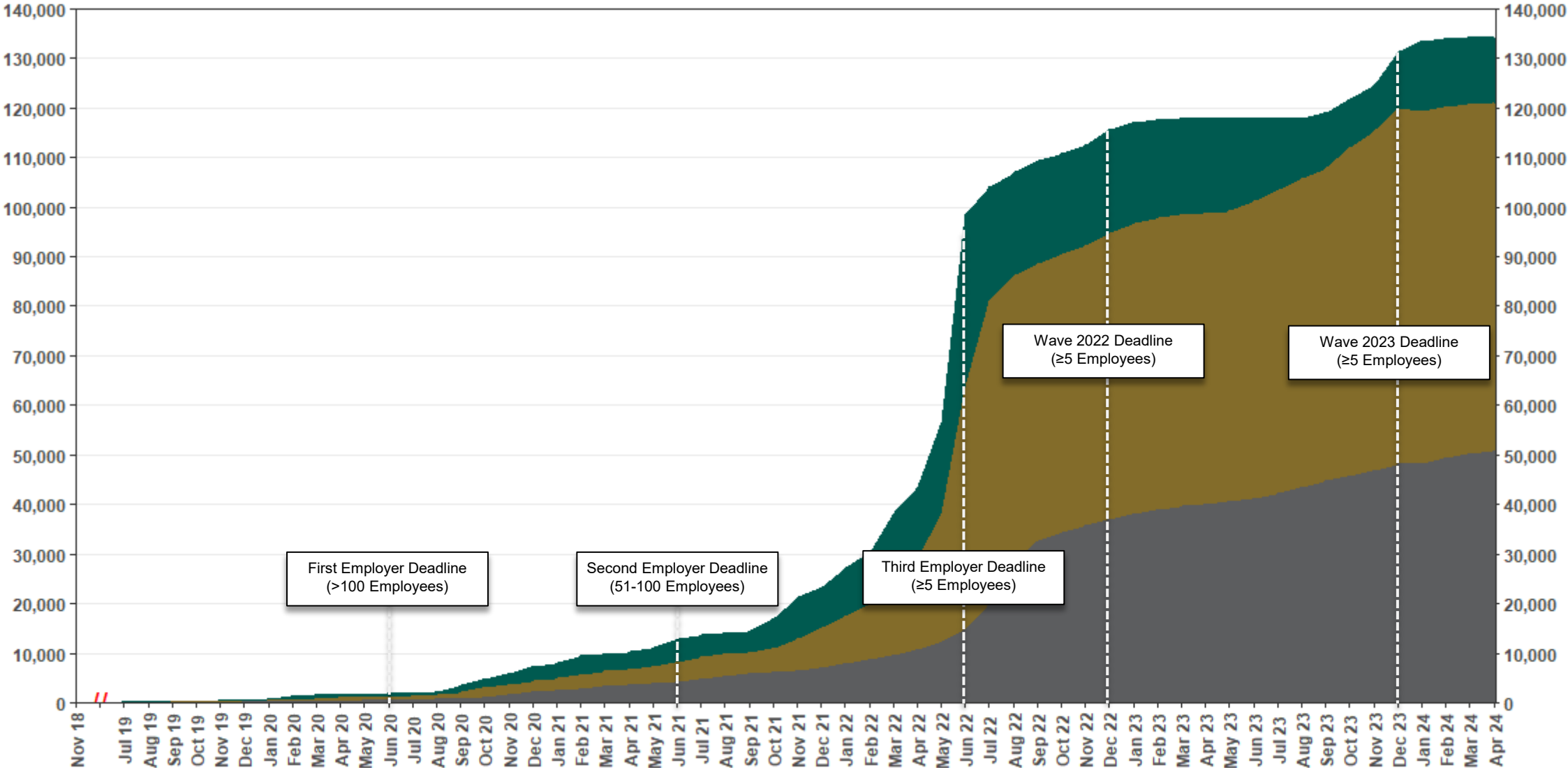
As of 4/30/24



The Program operated a limited scope pilot from November 2018 through June 2019 prior to full statewide launch on July 1, 2019.

Chart 6: Status of All Registered Employers

As of 4/30/24



The Program operated a limited scope pilot from November 2018 through June 2019 prior to full statewide launch on July 1, 2019.

Chart 7: Status of Post-Deadline Employers

As of 4/30/24

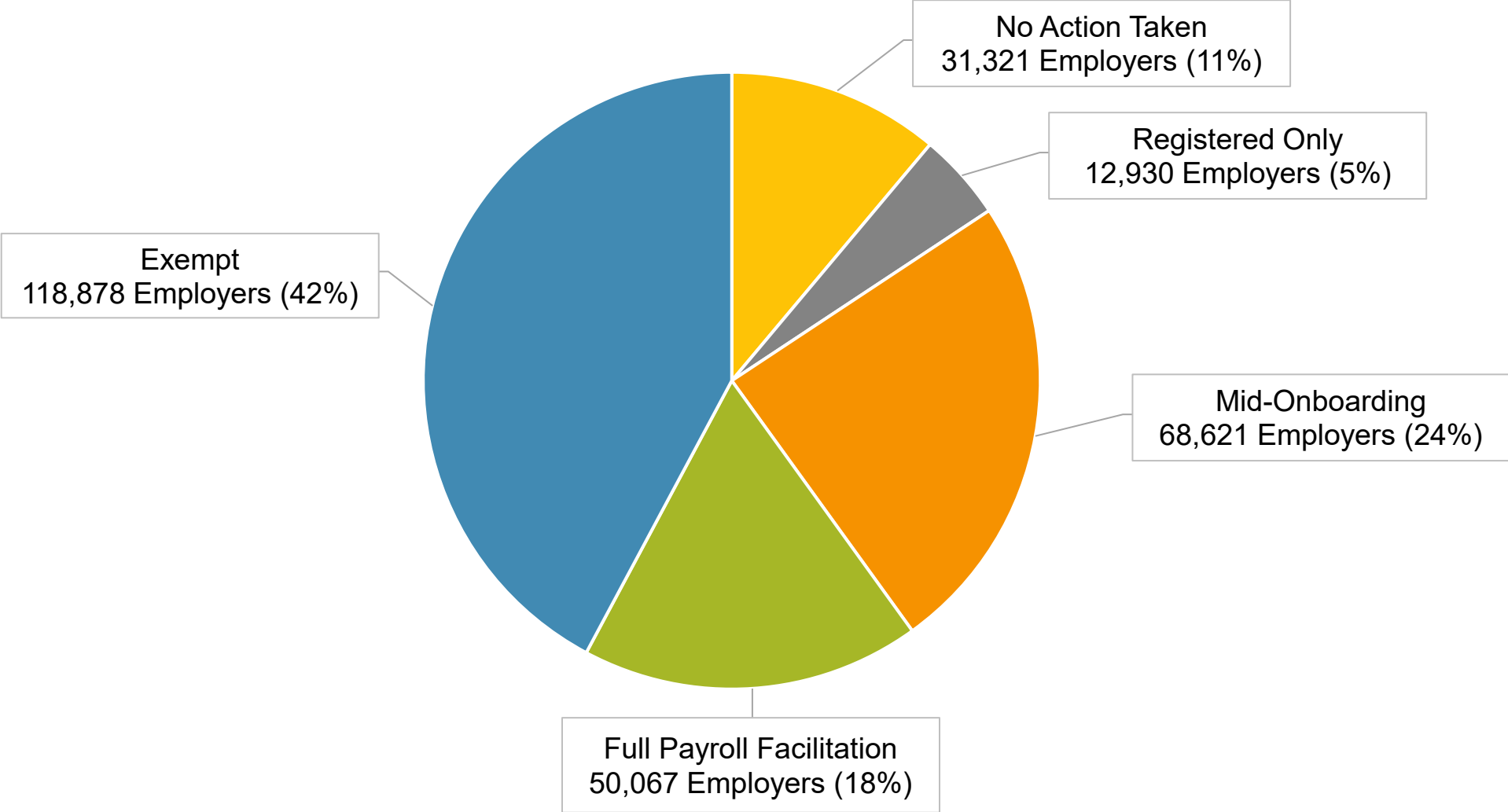
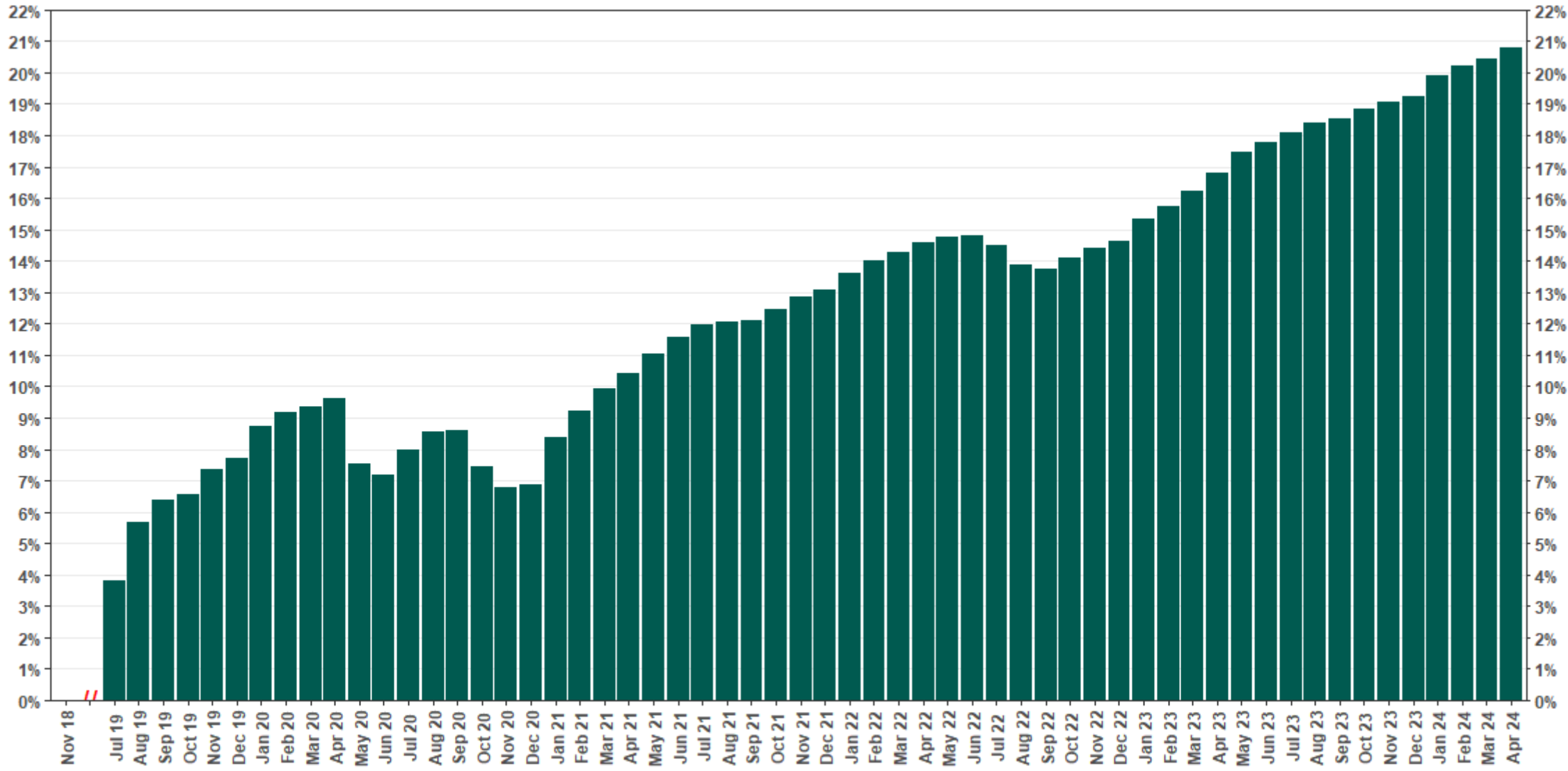


Chart 8: Accounts w/ Full Withdrawal as % of Payroll Contributing Accounts

As of 4/30/24



The Program operated a limited scope pilot from November 2018 through June 2019 prior to full statewide launch on July 1, 2019.