



CalSavers Retirement Savings Program Participation & Funding Snapshot as of 11/30/21

Employers	11/30/2021	10/31/2021	Change	% Change
1 Employers Registered	21,191	17,025	4,166	24.5%
2 Employers That Uploaded Roster	12,897	11,020	1,877	17.0%
3 Employers That Started Payroll Deductions	6,566	6,277	289	4.6%
4 Exempted Employers	57,053	54,849	2,204	4.0%

Participants

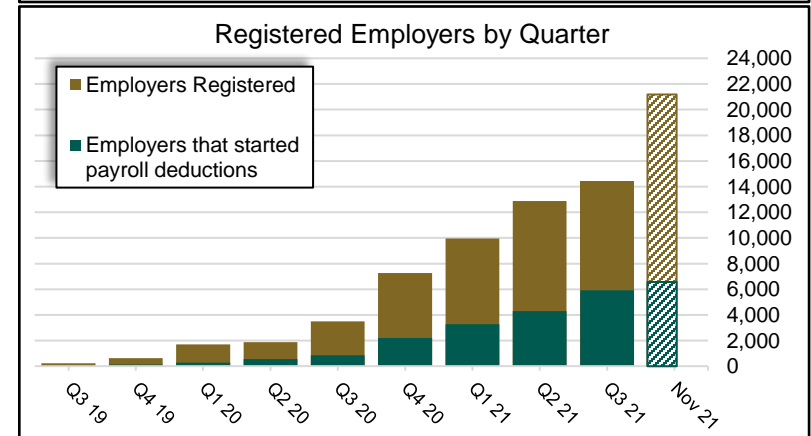
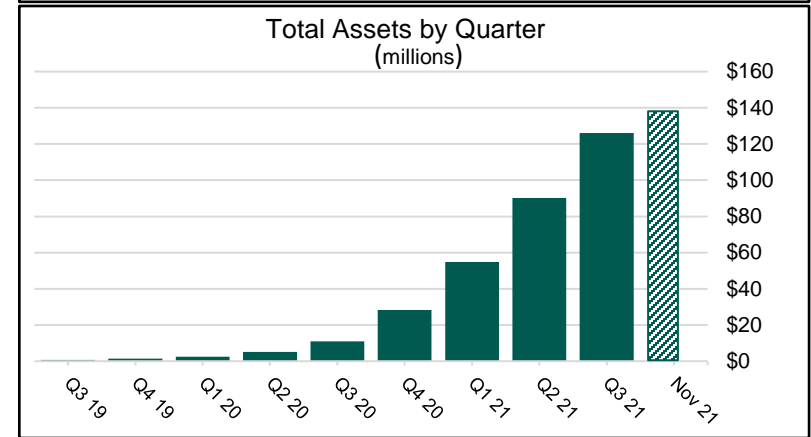
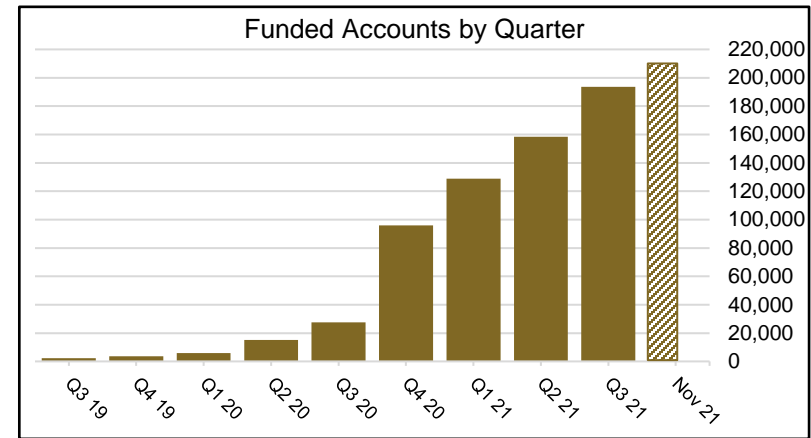
5 Funded Accounts	209,033	201,492	7,541	3.7%
6 Payroll Contributing Accounts	225,179	216,504	8,675	4.0%
7 Multiple Employer Accounts	71,062	66,041	5,021	7.6%
8 Self-Enrolled Funded Accounts	700	595	105	17.6%
9 Effective Opt-Out Rate	29.79%	29.60%	0.19%	0.7%

Funding

10 Total Assets	\$154,303,495	\$144,760,876	\$9,542,619	6.6%
11 Average Funded Account Balance	\$738	\$718	\$20	2.7%
12 Total Contributions Amount	\$170,145,400	\$154,361,668	\$15,783,732	10.2%
13 Average Monthly Contribution Amount	\$147	\$138	\$9	6.8%
14 Median Monthly Contribution Amount	\$119	\$112	\$7	6.0%
15 Average Contribution Rate	5.02%	5.02%	0.00%	0.0%
16 Amount of Withdrawals	\$18,105,870	\$15,665,723	\$2,440,147	15.6%
17 Accounts with a Full Withdrawal	28,973	27,000	1,973	7.3%
18 Accounts with a Partial Withdrawal	1,995	1,702	293	17.2%
19 Withdrawal Rate*	12.87%	12.47%	0.40%	3.2%

Status of Estimated Eligible Employers by Wave

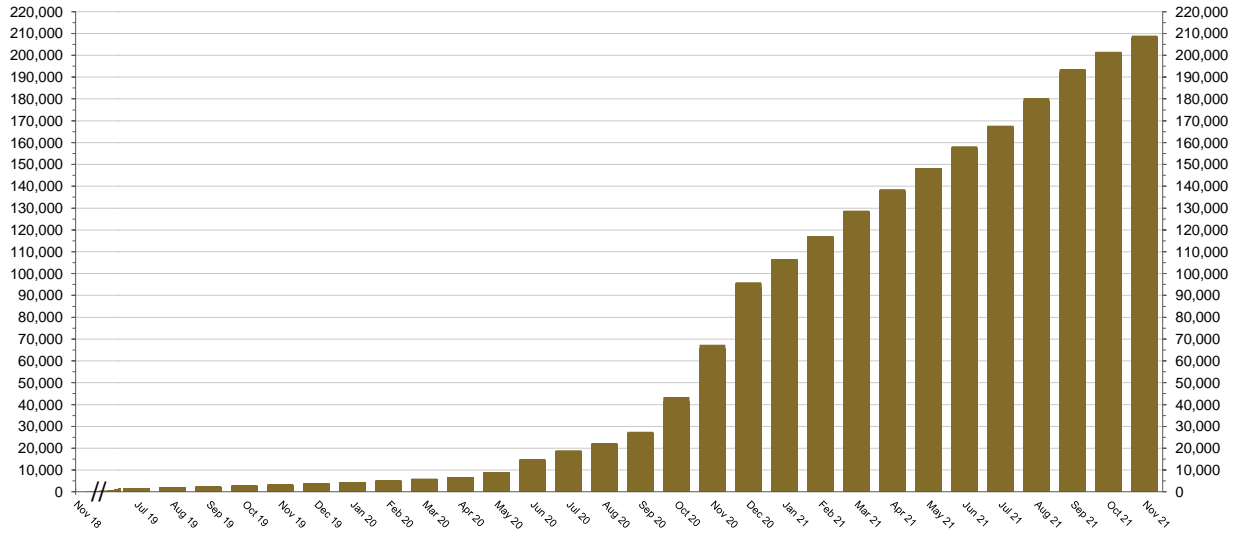
Wave (Deadline)	Employers Registered	Employers Exempted	Total Employers Responded	Total Estimated Eligible Employers [^]	Employer Response Rate	Employers Added Roster		Employers Started Payroll	
						Employers	% of Registered	Employers	% of Registered
Wave 1 (9/30/20)	1,776	5,270	7,046	7,918	89.0%	1,653	93.1%	1,356	76.4%
Wave 2 (6/30/21)	3,519	4,990	8,509	11,206	75.9%	2,534	72.0%	1,738	49.4%
Wave 3 (6/30/22)	15,896	46,793	62,689	252,817	24.8%	8,710	54.8%	3,472	21.8%
Total	21,191	57,053	78,244	271,941	28.8%	12,897	60.9%	6,566	31.0%



*The withdrawal rate is calculated as Accounts with a full withdrawal as a percent of Payroll Contributing Accounts

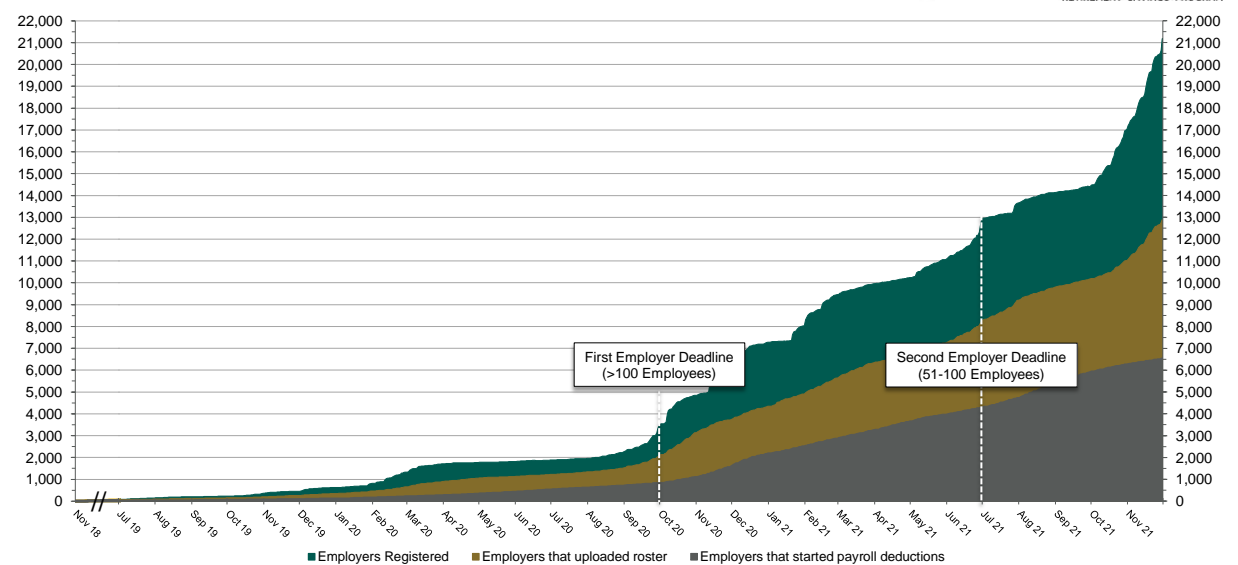
[^]Employer size is recalculated annually based on data obtained from the Employment Development Department. Data in the table above reflects the recalculation based on 2020 EDD reports.

Chart 1: Funded Accounts
As of 11/30/21



The Program operated a limited scope pilot from November 2018 through June 2019 prior to full statewide launch on July 1, 2019.

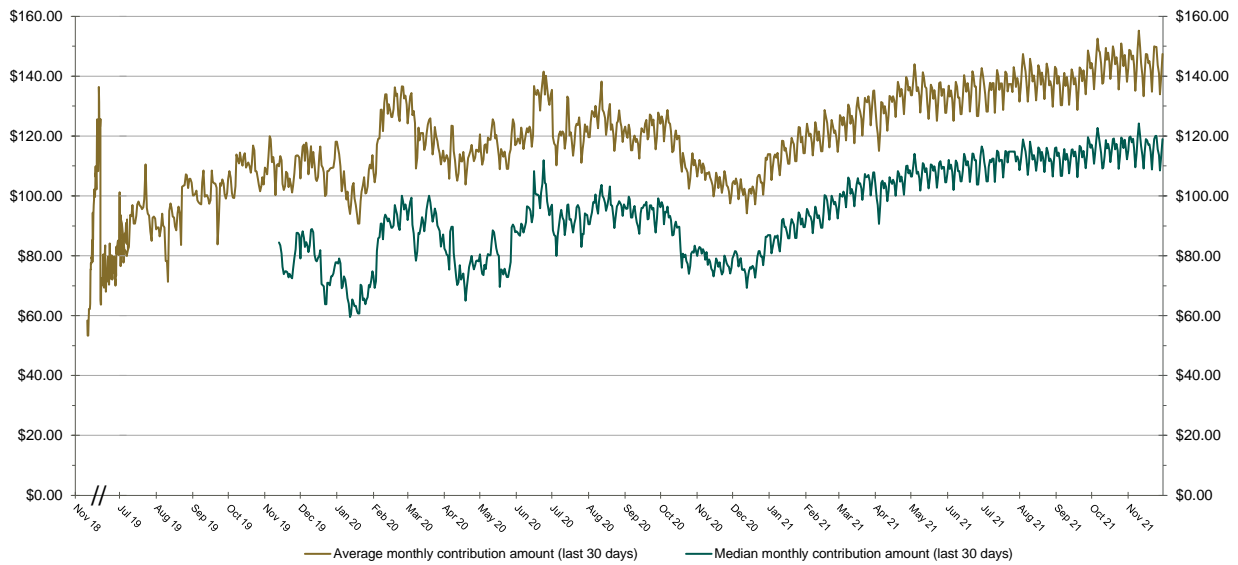
Chart 2: Status of All Registered Employers
As of 11/30/21



The Program operated a limited scope pilot from November 2018 through June 2019 prior to full statewide launch on July 1, 2019.

Chart 3: Monthly Contributions Per Saver

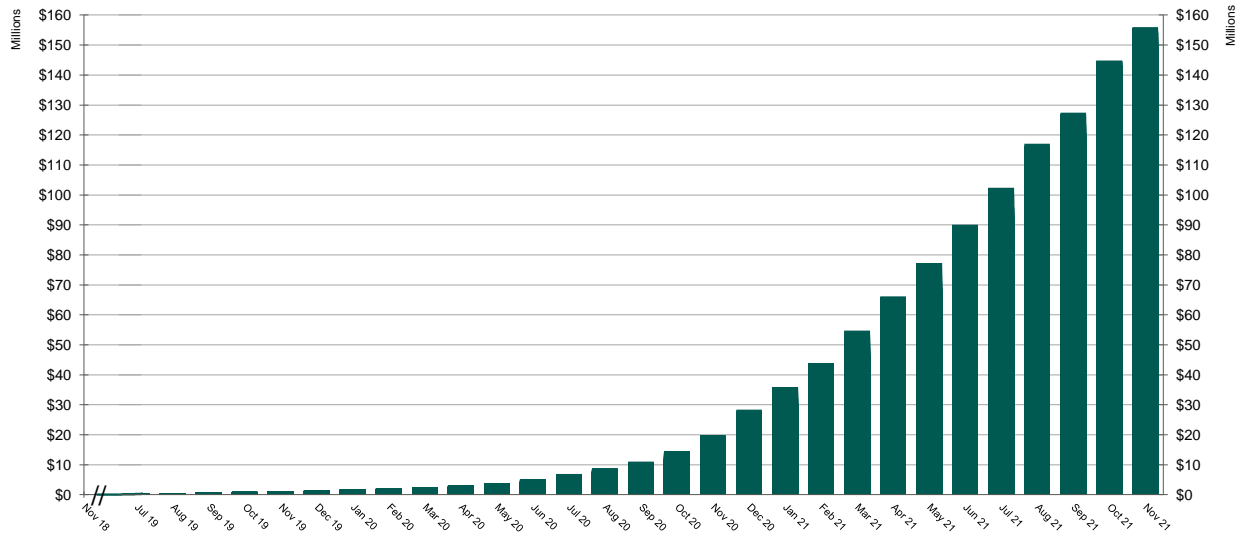
As of 11/30/21



The Program operated a limited scope pilot from November 2018 through June 2019 prior to full statewide launch on July 1, 2019.

Chart 4: Total Assets

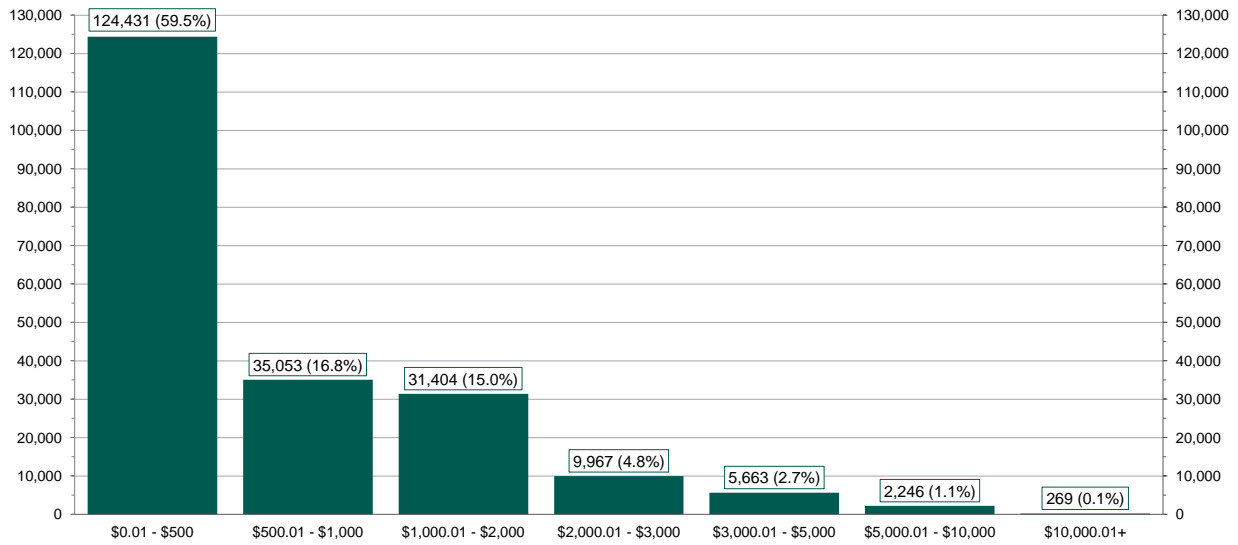
As of 11/30/21



The Program operated a limited scope pilot from November 2018 through June 2019 prior to full statewide launch on July 1, 2019.

Chart 5: Distribution of Accounts by Balance

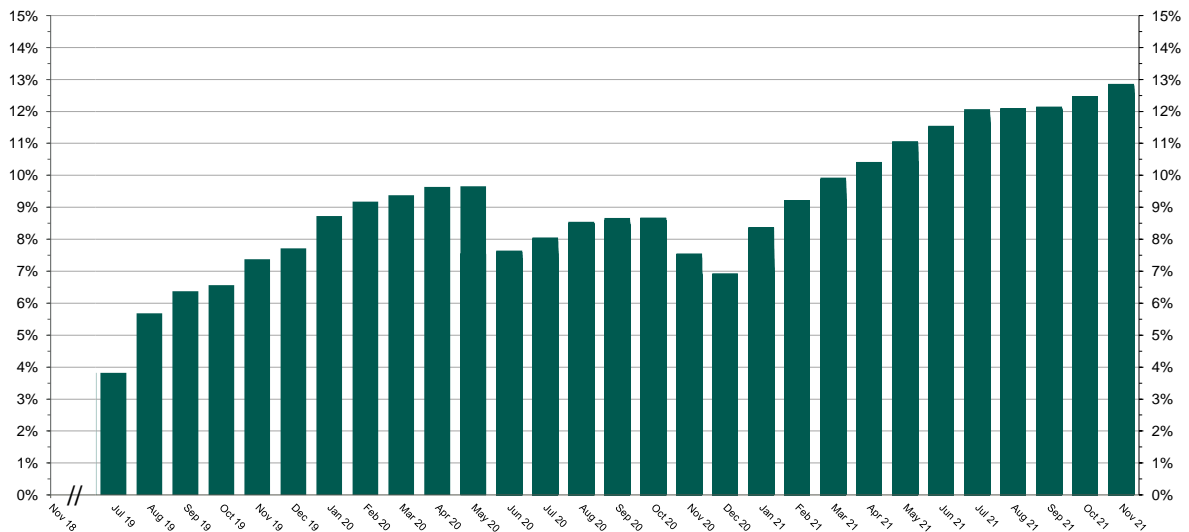
As of 11/30/21



The Program operated a limited scope pilot from November 2018 through June 2019 prior to full statewide launch on July 1, 2019.

Chart 6: Accounts w/a Full Withdrawal as % of Payroll Contributing Accounts

As of 11/30/21



The Program operated a limited scope pilot from November 2018 through June 2019 prior to full statewide launch on July 1, 2019.