



CalSavers Retirement Savings Program Participation & Funding Snapshot as of 10/31/2024

Employer Registration Status Changes

Employer Status	10/31/2024	7/31/2024	Change	% Change
Registered	138,207	134,862	3,345	2.5%
Uploaded Roster	126,962	122,946	4,016	3.3%
Started Payroll Deductions	54,025	51,988	2,037	3.9%
Facilitated Deductions in last 90 days	38,639	38,290	349	0.9%
Exempt	102,969	130,480	-27,511	-21.1%

Participant Savings and Enrollment Changes

Participant Account Status	10/31/2024	7/31/2024	Change	% Change
Funded Accounts	525,887	519,562	6,325	1.2%
Payroll Contributing Accounts	601,768	580,110	21,658	3.7%
Multiple Employer Accounts*	87,425	83,572	3,853	4.6%
Self-Enrolled Funded Accounts	2,745	2,638	107	4.1%
Effective Opt-Out Rate	35.81%	35.91%	-0.10%	-0.3%

Status of Eligible Employers by Wave

Wave (Deadline)	Employers Registered	Employers Exempted	Total Employers Responded	Total Estimated Eligible Employers	Employer Response Rate
Post-Deadline Employers	132,211	88,865	221,076	242,161	91.3%
Wave 2024 (12/31/24)	2,209	3,104	5,313	N/A	N/A
Wave 4 (12/31/25)	3,787	11,000	14,787	N/A	N/A
Total	138,207	102,969	241,176	242,161	99.6%

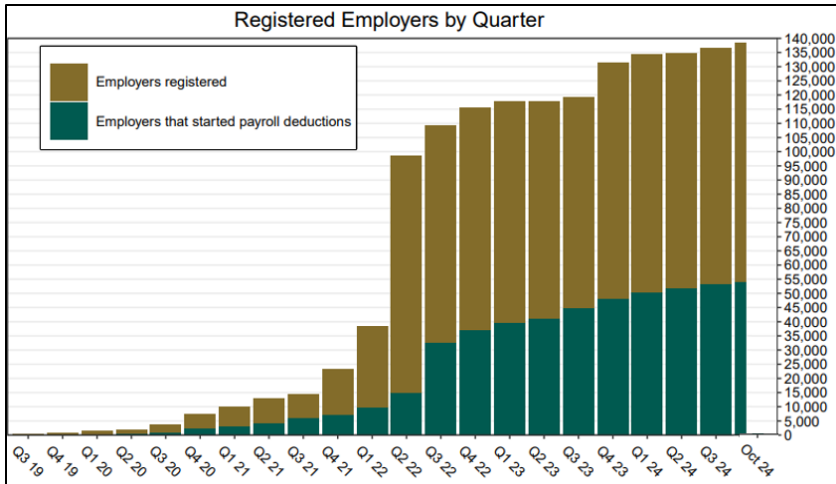
* This data point reflects the number of funded account holders associated with more than one registered employer

** Withdrawal Rate is calculated as Accounts with a full withdrawal as a percent of Payroll Contributing Accounts

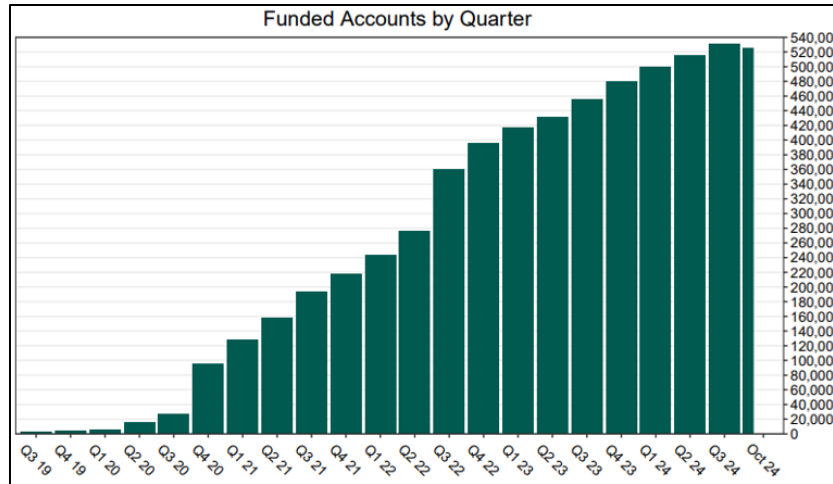
Funding Amounts and Withdrawals

Funding Amounts	10/31/2024	7/31/2024	Change	% Change
Total Assets	\$1,064,547,889	\$984,708,724	\$79,839,165	8.1%
Average Funded Account Balance	\$2,024	\$1,895	\$129	6.8%
Total Contributions Amount	\$1,223,974,489	\$1,117,951,576	\$106,022,913	9.5%
Average Monthly Contribution Amount	\$191	\$198	-\$7	-3.5%
Median Monthly Contribution Amount	\$150	\$152	-\$2	-1.3%
Average Contribution Rate	5.19%	5.20%	-0.01%	-0.2%
Amount of Withdrawals	\$292,353,541	\$255,013,234	\$37,340,307	14.6%
Accounts with a Full Withdrawal	134,282	126,223	8,059	6.4%
Accounts with a Partial Withdrawal	22,839	20,519	2,320	11.3%
Withdrawal Rate**	22.31%	21.76%	0.55%	2.5%

Registered Employers by Quarter



Funded Accounts by Quarter



Total Assets by Quarter (millions)

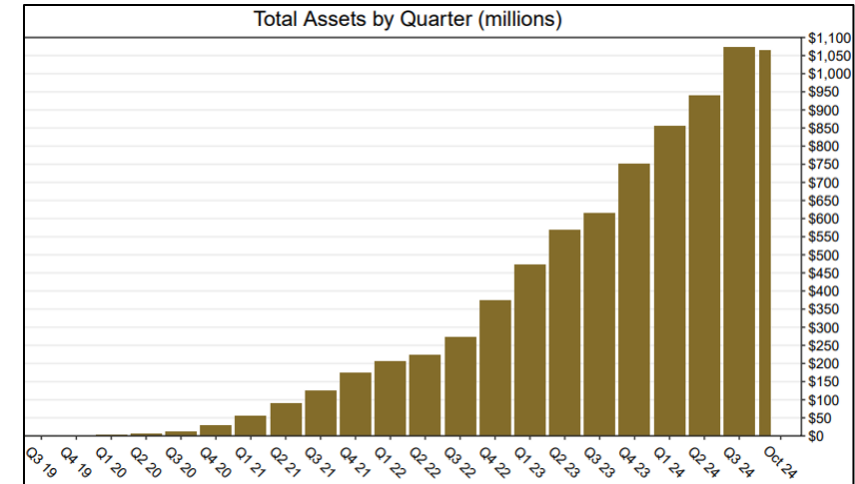
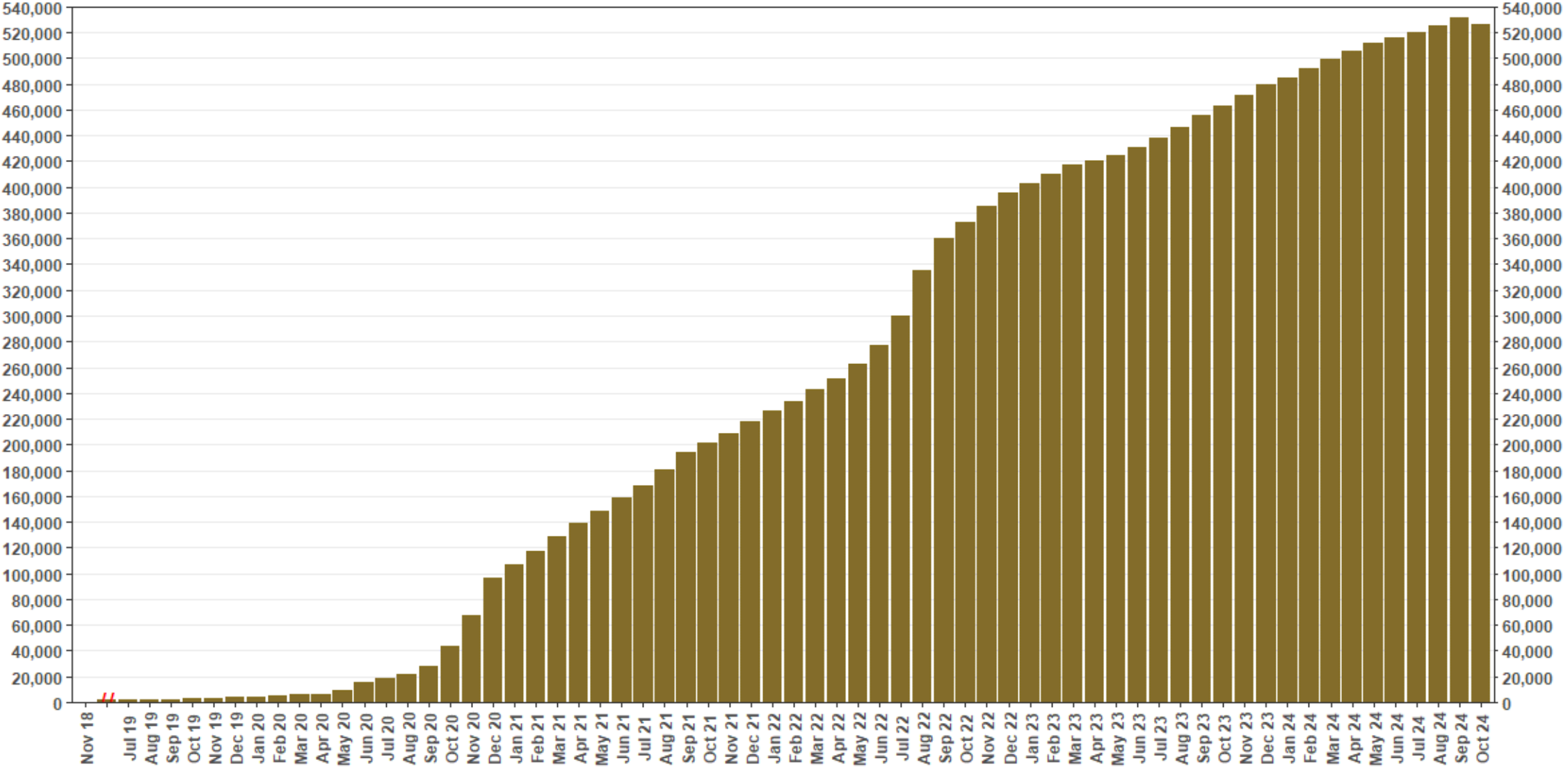


Chart 1: Funded Accounts

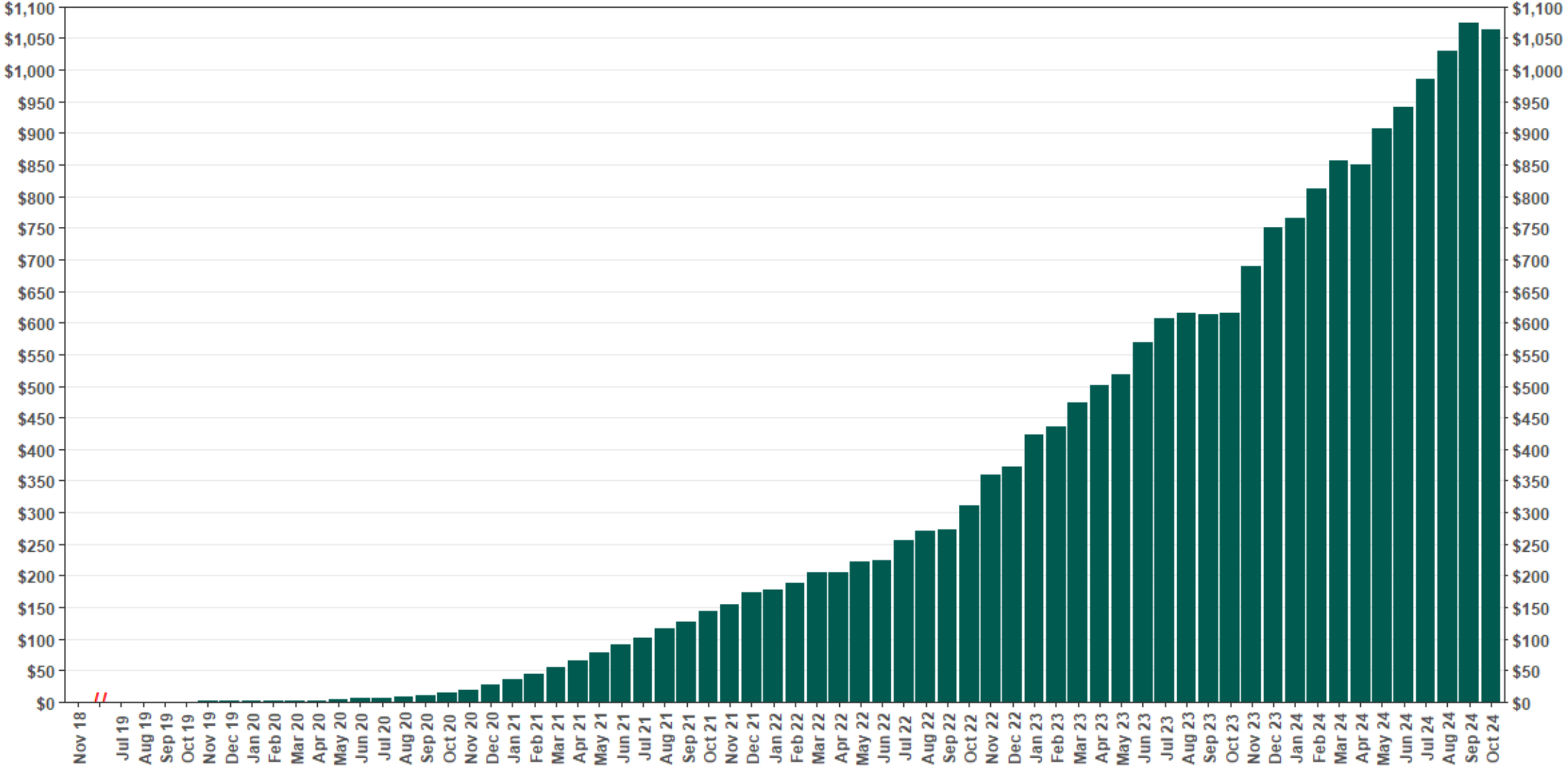
As of 10/31/24



The Program operated a limited scope pilot from November 2018 through June 2019 prior to full statewide launch on July 1, 2019.

Chart 2: Total Assets (millions)

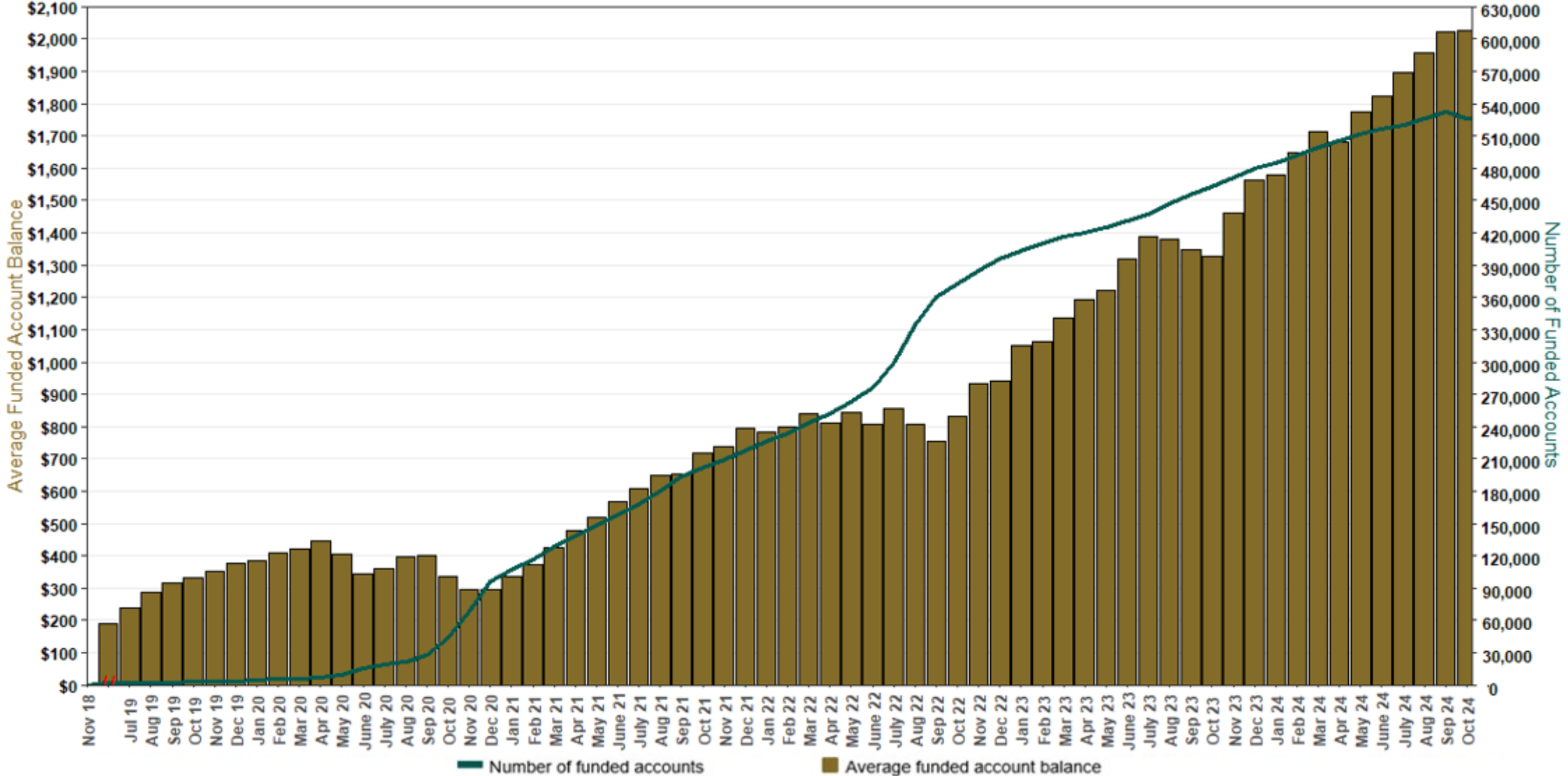
As of 10/31/24



The Program operated a limited scope pilot from November 2018 through June 2019 prior to full statewide launch on July 1, 2019.

Chart 3: Average Funded Account Balance

As of 10/31/24



The Program operated a limited scope pilot from November 2018 through June 2019 prior to full statewide launch on July 1, 2019.

Chart 4: Distribution of Accounts by Balance

As of 10/31/24

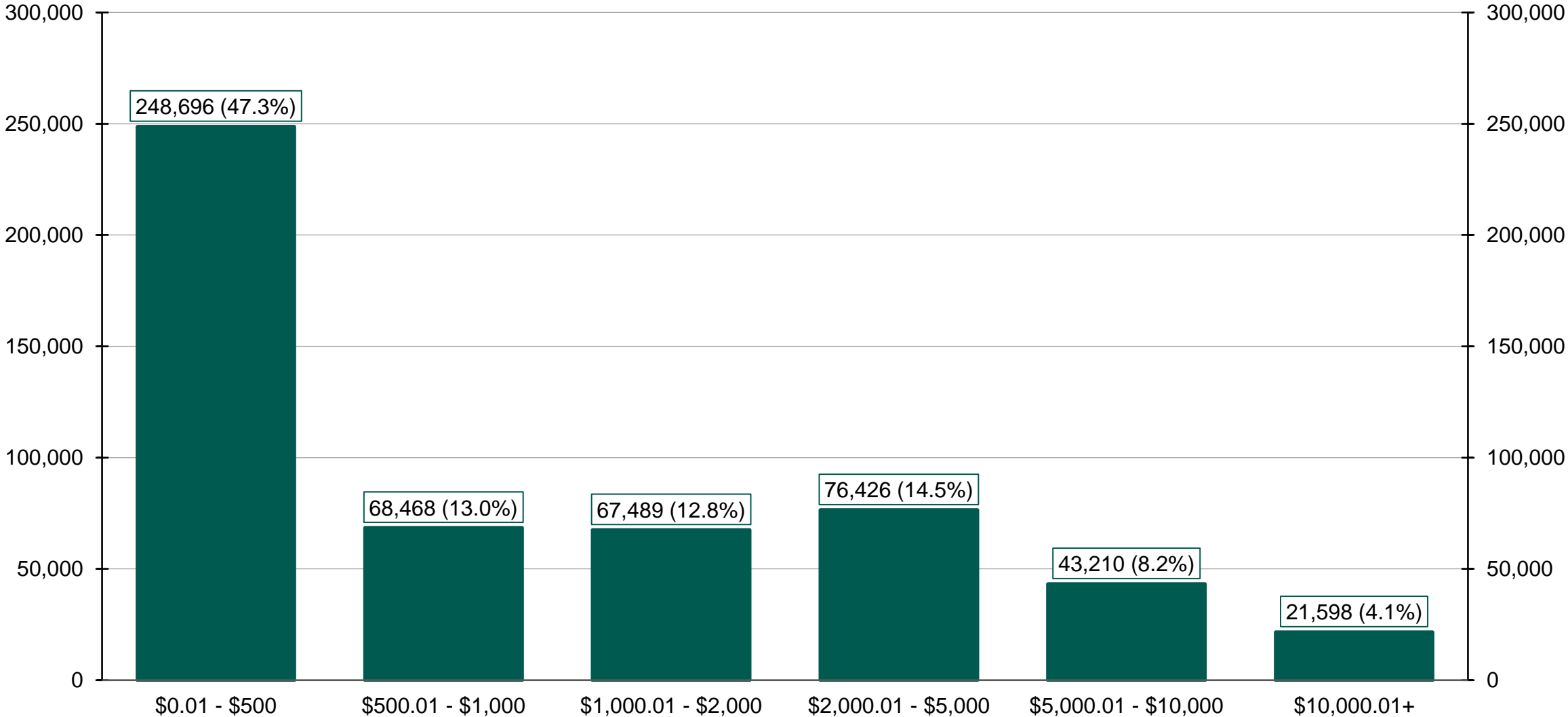
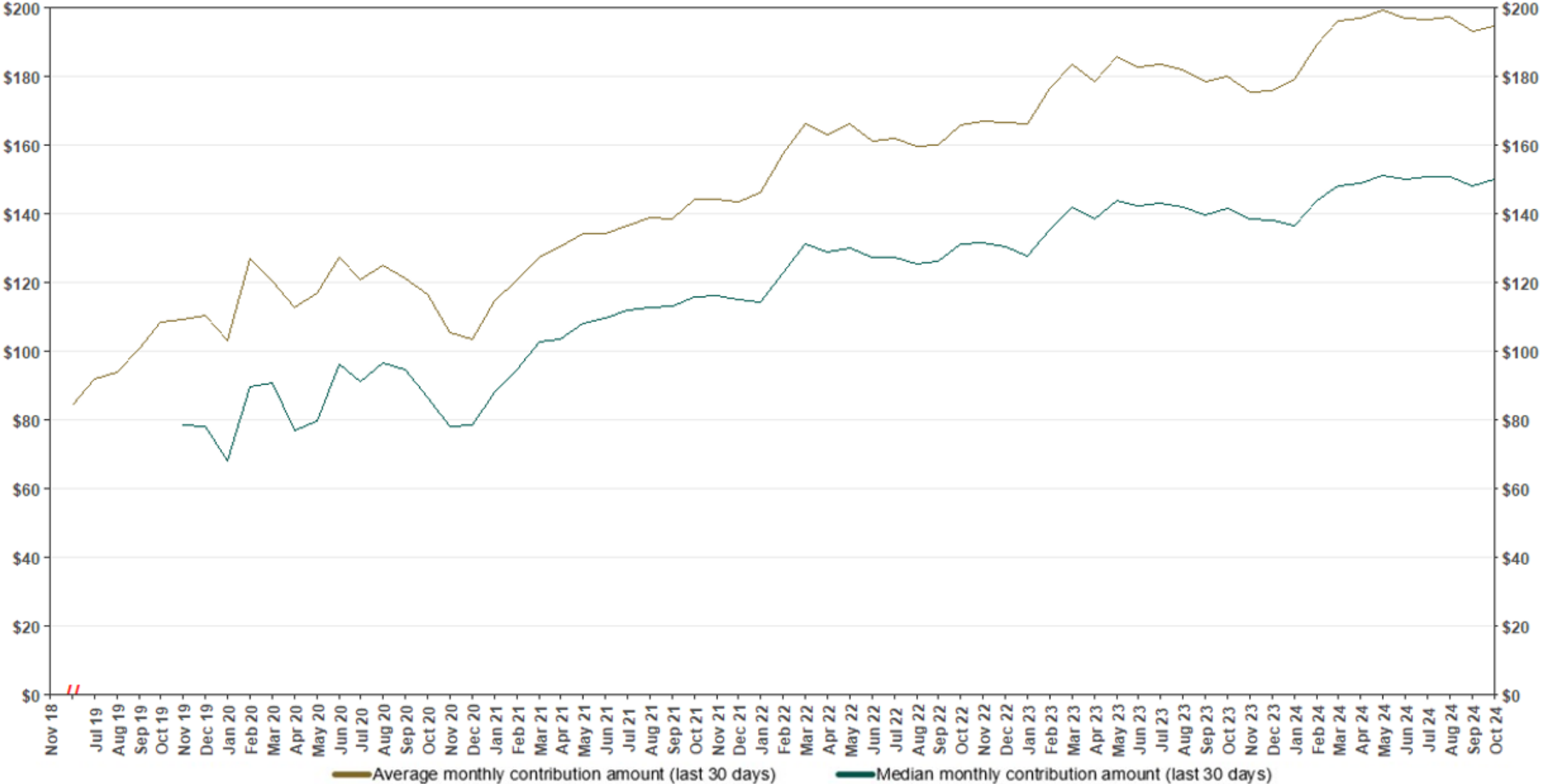


Chart 5: Monthly Contributions Per Saver

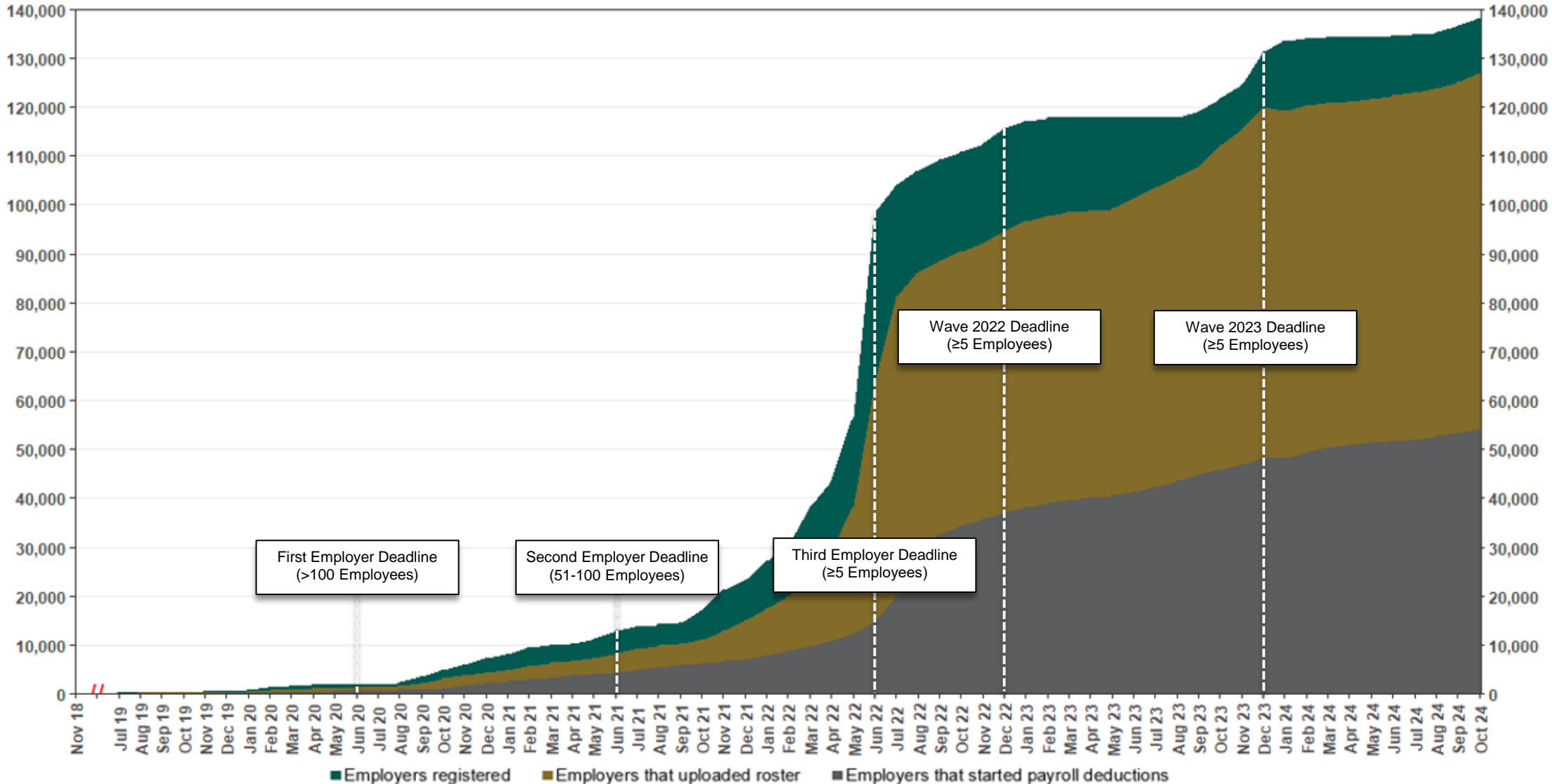
As of 10/31/24



The Program operated a limited scope pilot from November 2018 through June 2019 prior to full statewide launch on July 1, 2019.

Chart 6: Status of All Registered Employers

As of 10/31/24



The Program operated a limited scope pilot from November 2018 through June 2019 prior to full statewide launch on July 1, 2019.

Chart 7: Status of Post-Deadline Employers

As of 10/31/24

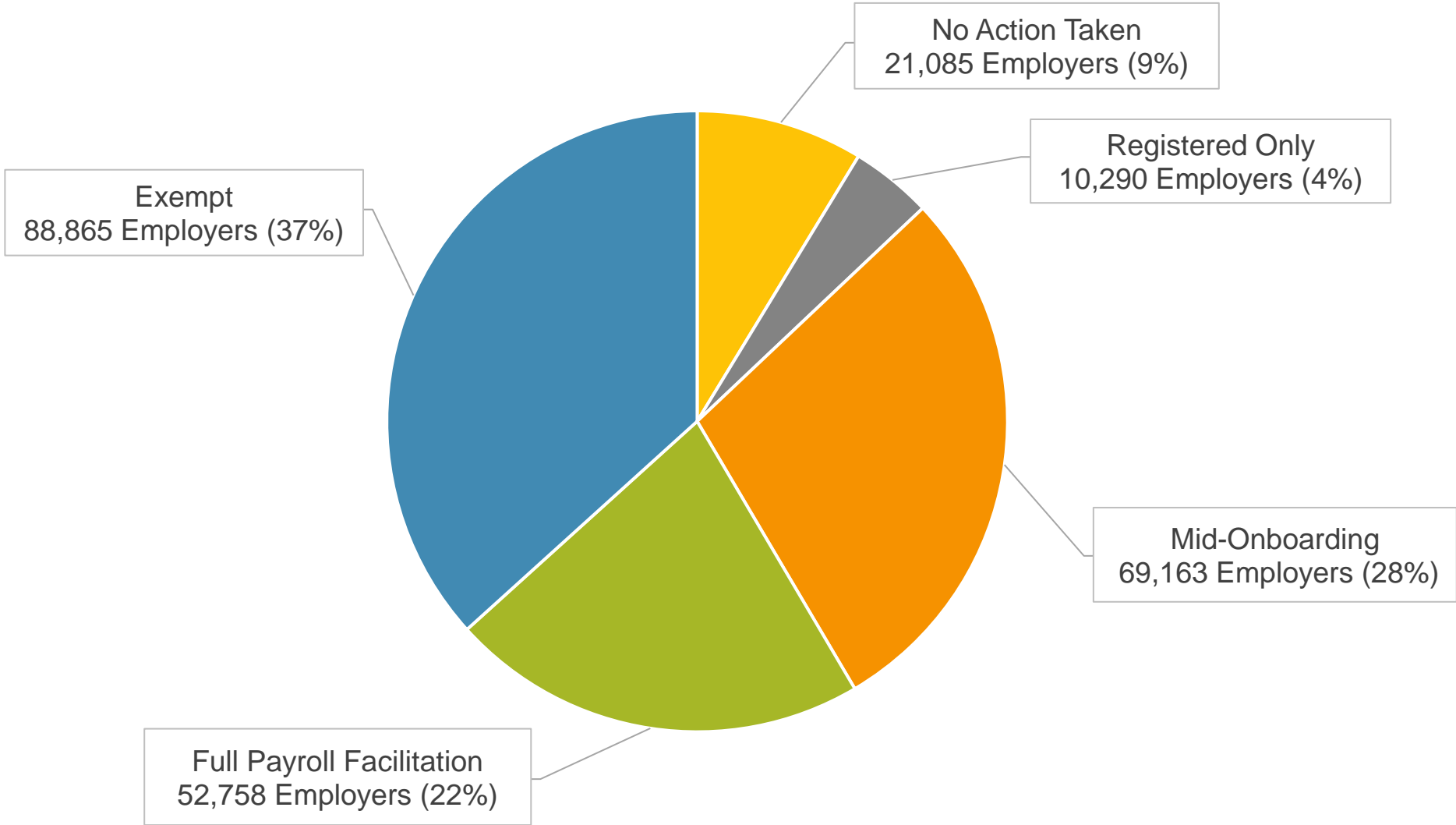
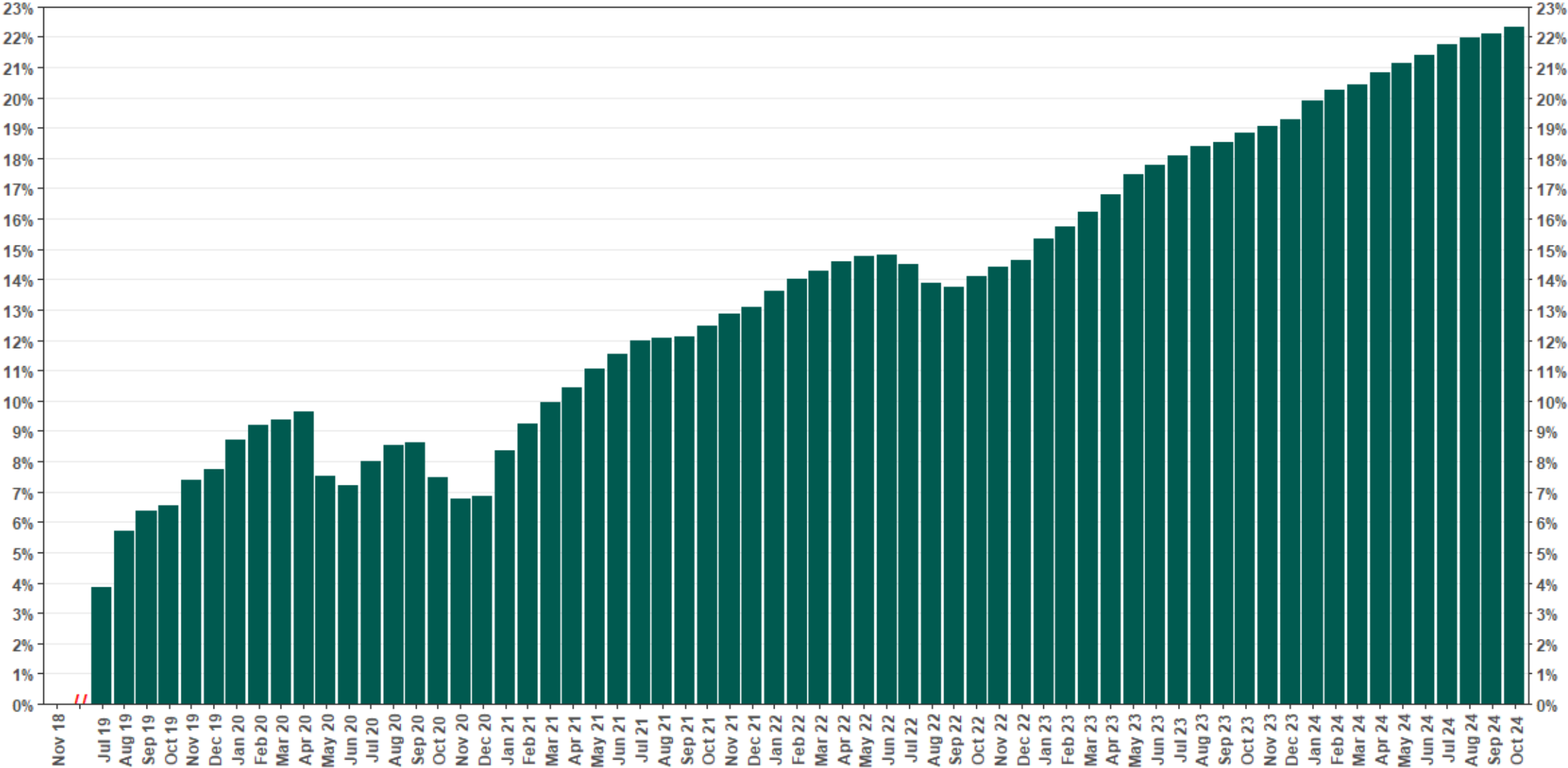


Chart 8: Accounts w/ Full Withdrawal as % of Payroll Contributing Accounts

As of 10/31/24



The Program operated a limited scope pilot from November 2018 through June 2019 prior to full statewide launch on July 1, 2019.