



CalSavers Retirement Savings Program Participation & Funding Snapshot as of 1/31/2025

Employer Registration Status Changes

Employer Status	1/31/2025	10/31/2024	Change	% Change
Registered	147,090	138,207	8,883	6.4%
Uploaded Roster	134,893	126,962	7,931	6.2%
Started Payroll Deductions	56,169	54,025	2,144	4.0%
Facilitated Deductions in last 90 days	39,430	38,639	791	2.0%
Exempt	111,774	102,969	8,805	8.6%

Participant Savings and Enrollment Changes

Participant Account Status	1/31/2025	10/31/2024	Change	% Change
Funded Accounts	539,563	525,887	13,676	2.6%
Payroll Contributing Accounts	624,083	601,768	22,315	3.7%
Multiple Employer Accounts*	92,809	87,425	5,384	6.2%
Self-Enrolled Funded Accounts	2,831	2,745	86	3.1%
Effective Opt-Out Rate	35.32%	35.81%	-0.49%	-1.4%

Status of Eligible Employers by Wave

Wave (Deadline)	Employers Registered	Employers Exempted	Total Employers Responded	Total Estimated Eligible Employers	Employer Response Rate
Prior Waves	132,098	89,920	222,018	242,199	91.7%
Wave 2024 (12/31/24)	9,695	10,411	20,106	43,229	46.5%
Wave 4 (12/31/25)	5,297	11,443	16,740	N/A	N/A
Total	147,090	111,774	258,864	285,428	90.7%

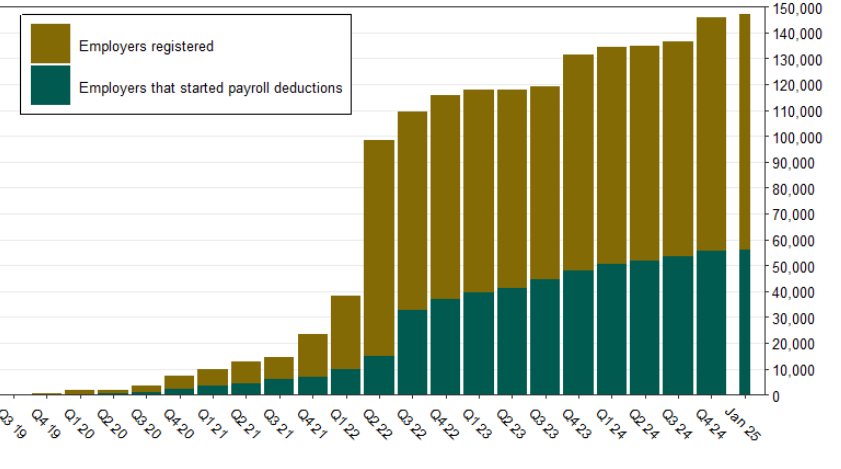
* This data point reflects the number of funded account holders associated with more than one registered employer

** Withdrawal Rate is calculated as Accounts with a full withdrawal as a percent of Payroll Contributing Accounts

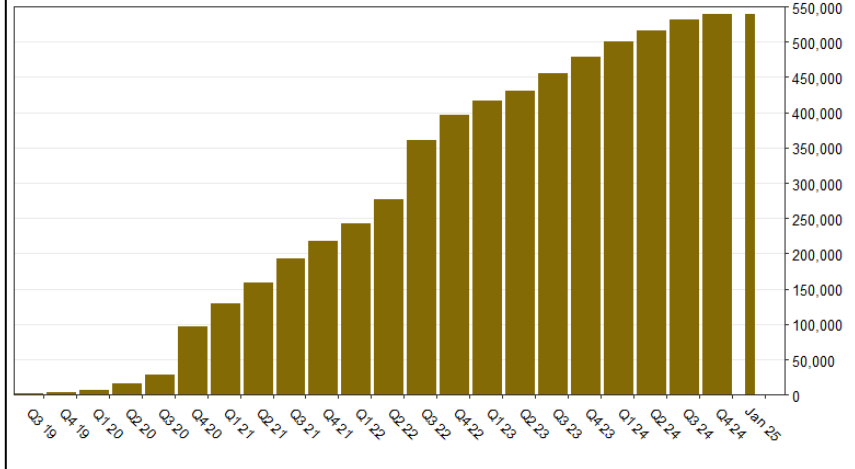
Funding Amounts and Withdrawals

Funding Amounts	1/31/2025	10/31/2024	Change	% Change
Total Assets	\$1,158,434,319	\$1,064,547,889	\$93,886,430	8.8%
Average Funded Account Balance	\$2,147	\$2,024	\$123	6.1%
Total Contributions Amount	\$1,329,384,877	\$1,223,974,489	\$105,410,388	8.6%
Average Monthly Contribution Amount	\$203	\$191	\$12	6.3%
Median Monthly Contribution Amount	\$150	\$150	\$0	0.0%
Average Contribution Rate	5.25%	5.19%	0.06%	1.2%
Amount of Withdrawals	\$334,948,479	\$292,353,541	\$42,594,938	14.6%
Accounts with a Full Withdrawal	143,736	134,282	9,454	7.0%
Accounts with a Partial Withdrawal	25,271	22,839	2,432	10.6%
Withdrawal Rate**	23.03%	22.31%	0.72%	3.2%

Registered Employers by Quarter



Funded Accounts by Quarter



Total Assets by Quarter (millions)

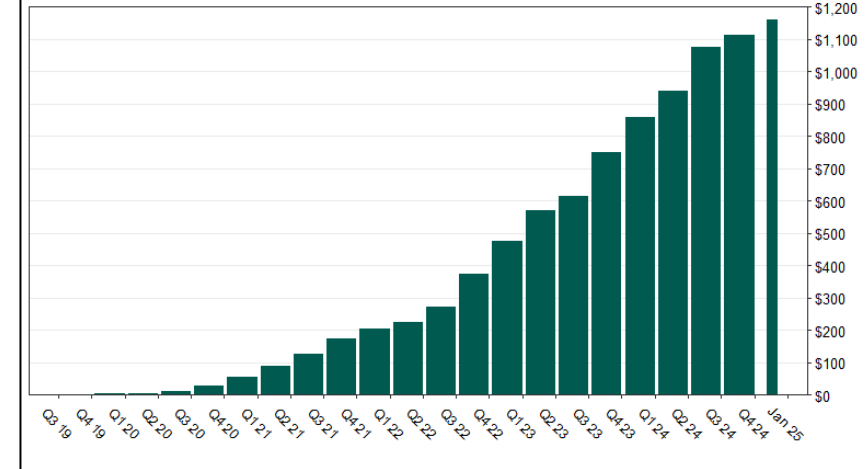
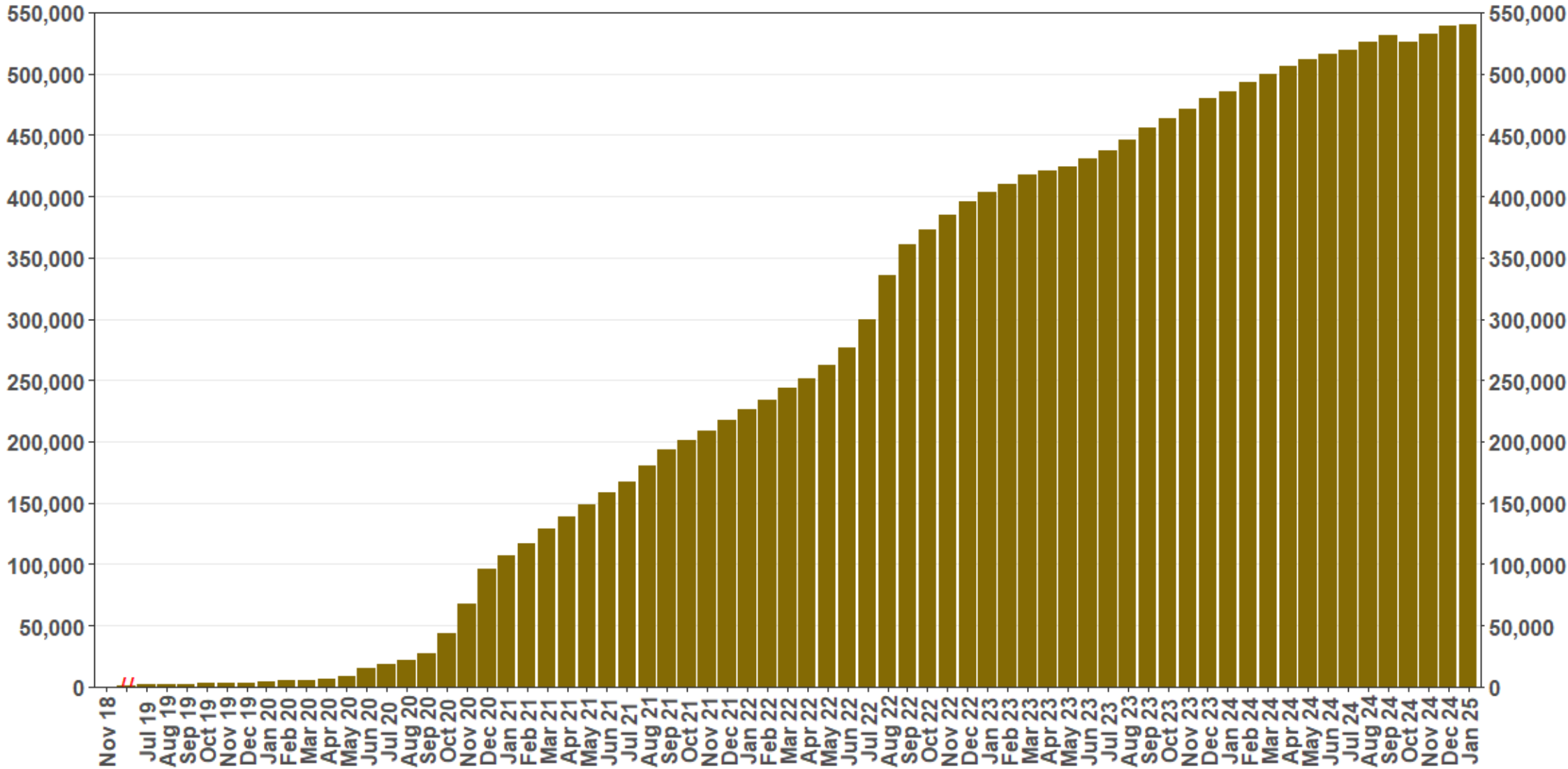


Chart 1: Funded Accounts

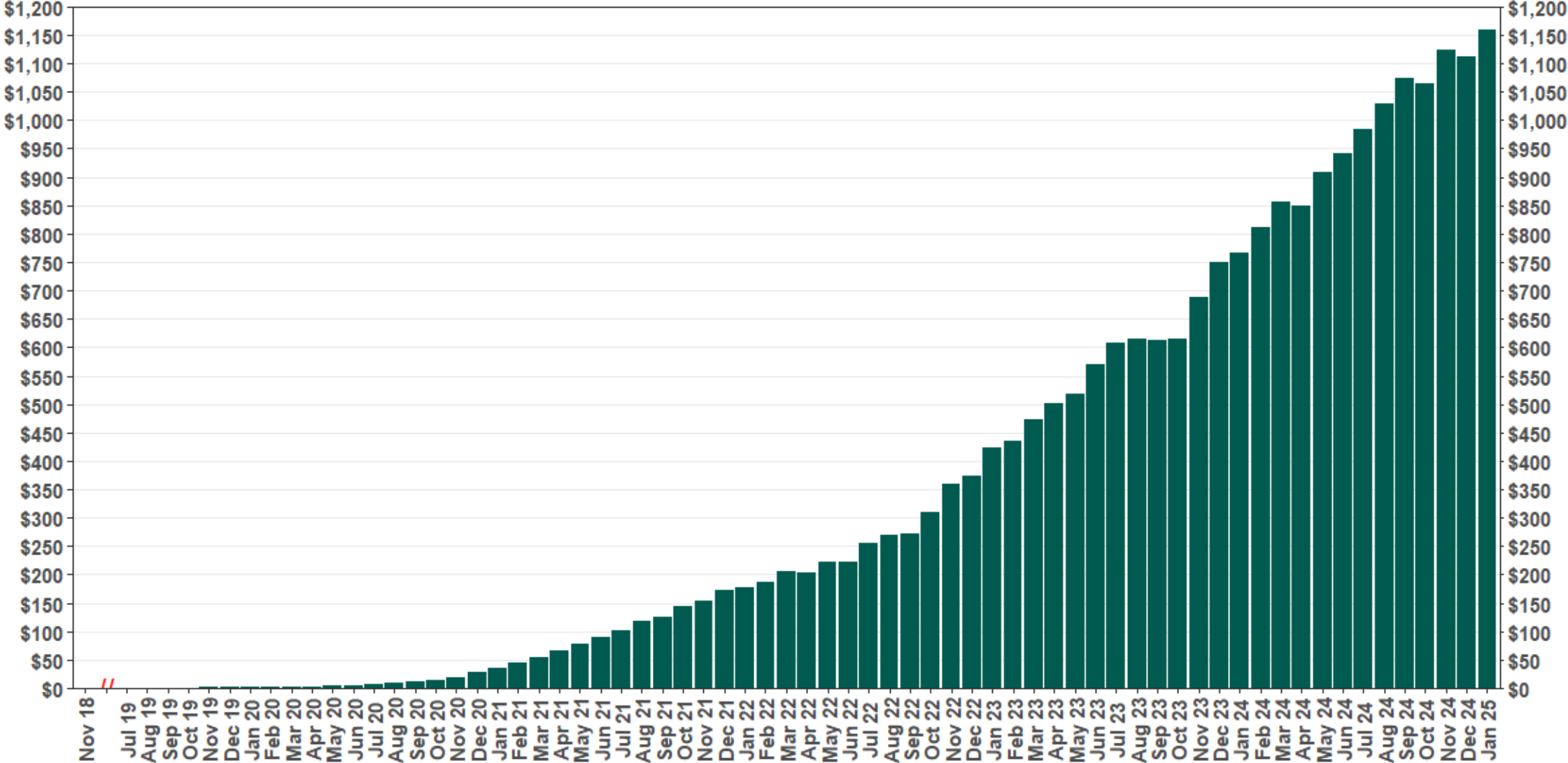
As of 1/31/25



The Program operated a limited scope pilot from November 2018 through June 2019 prior to full statewide launch on July 1, 2019.

Chart 2: Total Assets (millions)

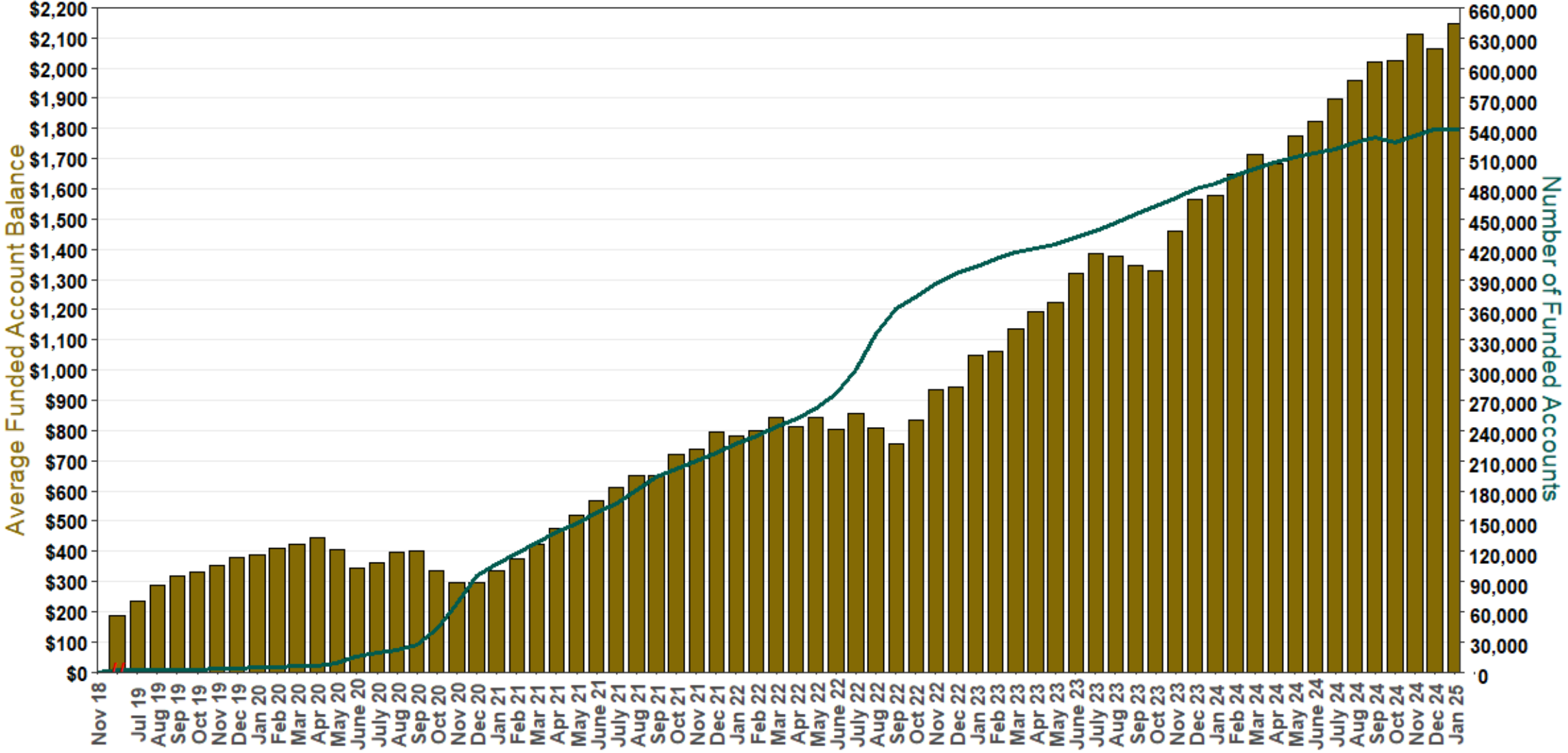
As of 1/31/25



The Program operated a limited scope pilot from November 2018 through June 2019 prior to full statewide launch on July 1, 2019.

Chart 3: Average Funded Account Balance

As of 1/31/25



The Program operated a limited scope pilot from November 2018 through June 2019 prior to full statewide launch on July 1, 2019.

Chart 4: Distribution of Accounts by Balance

As of 1/31/25

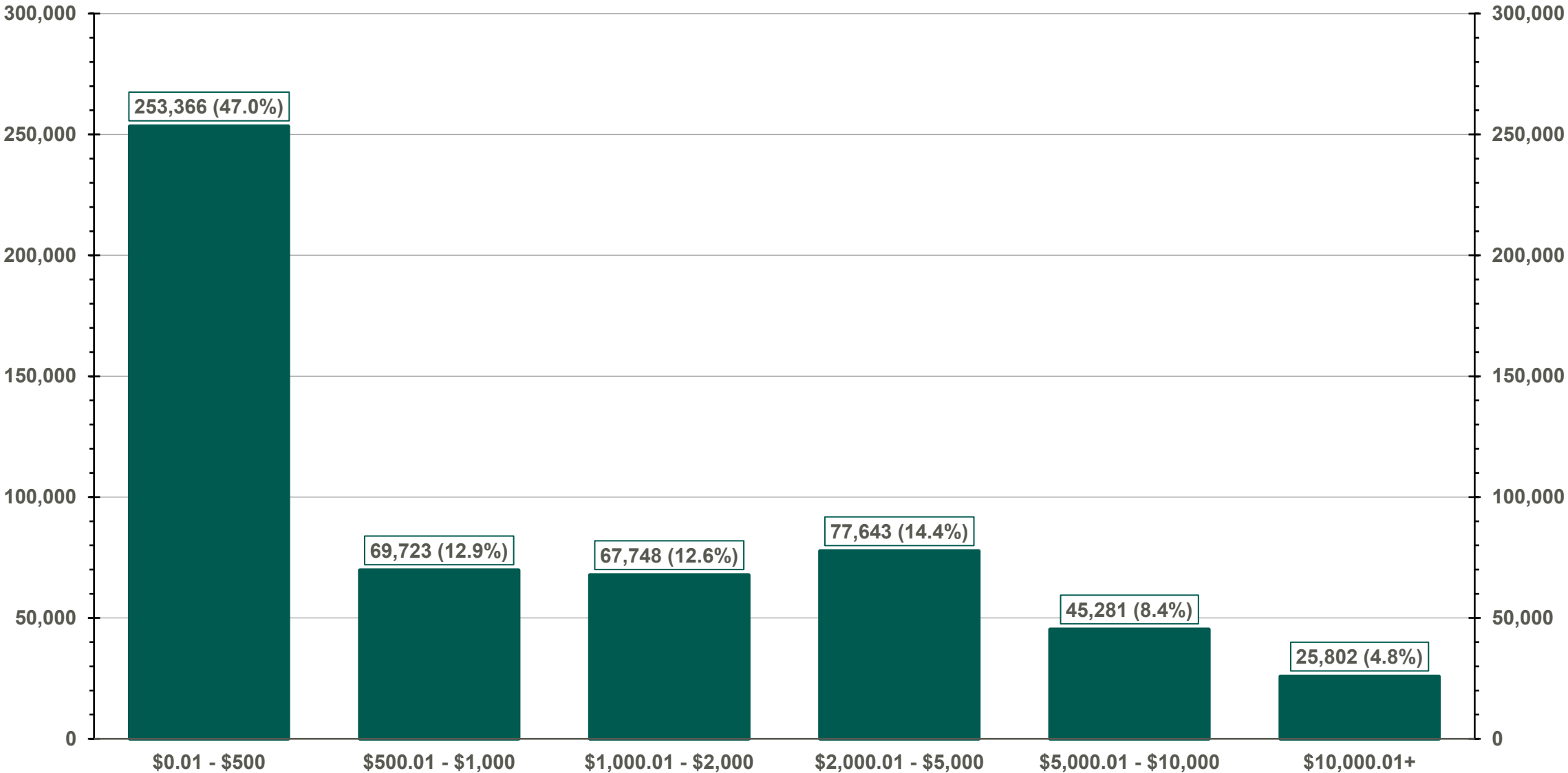
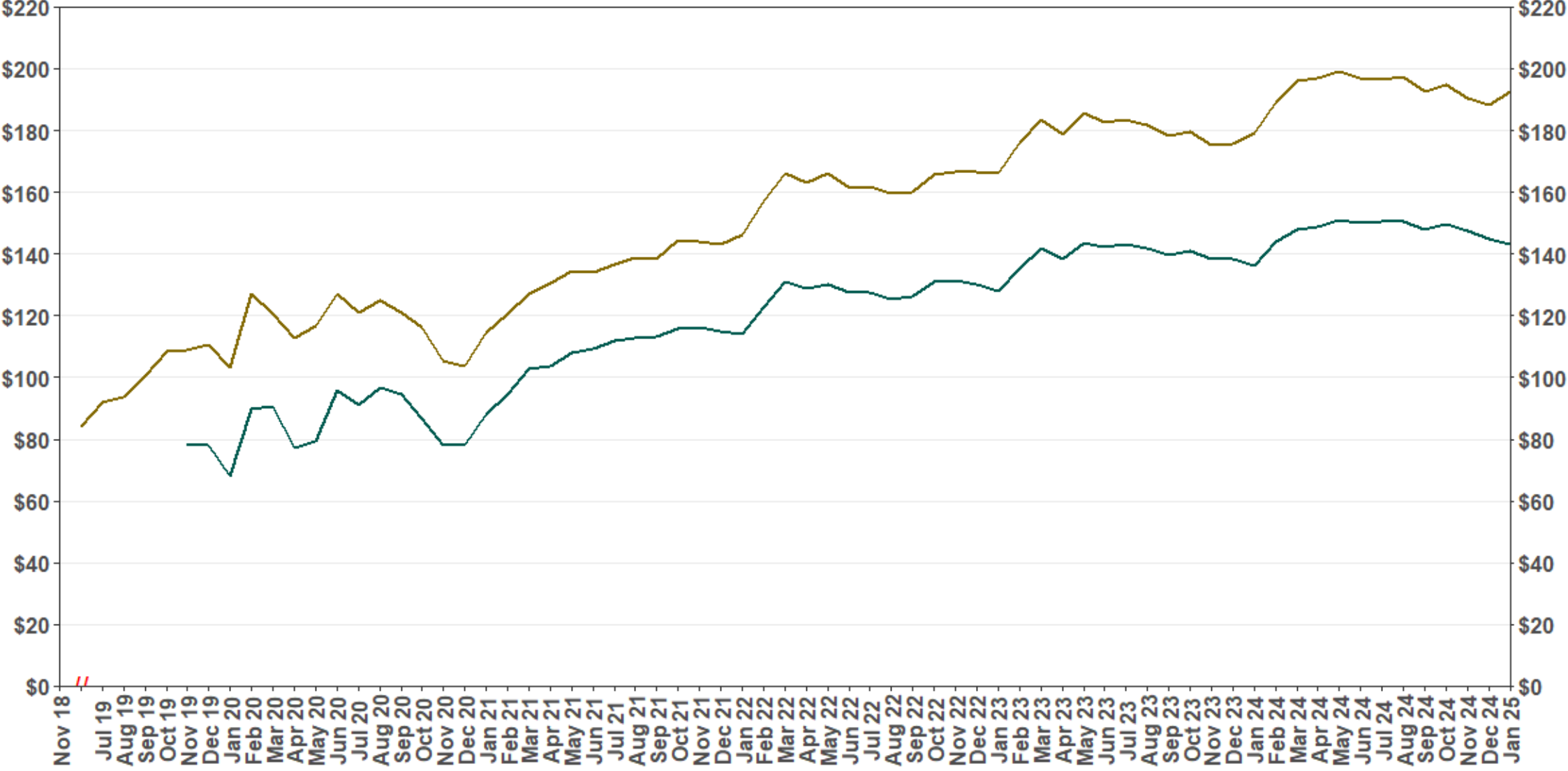


Chart 5: Monthly Contributions Per Saver

As of 1/31/25

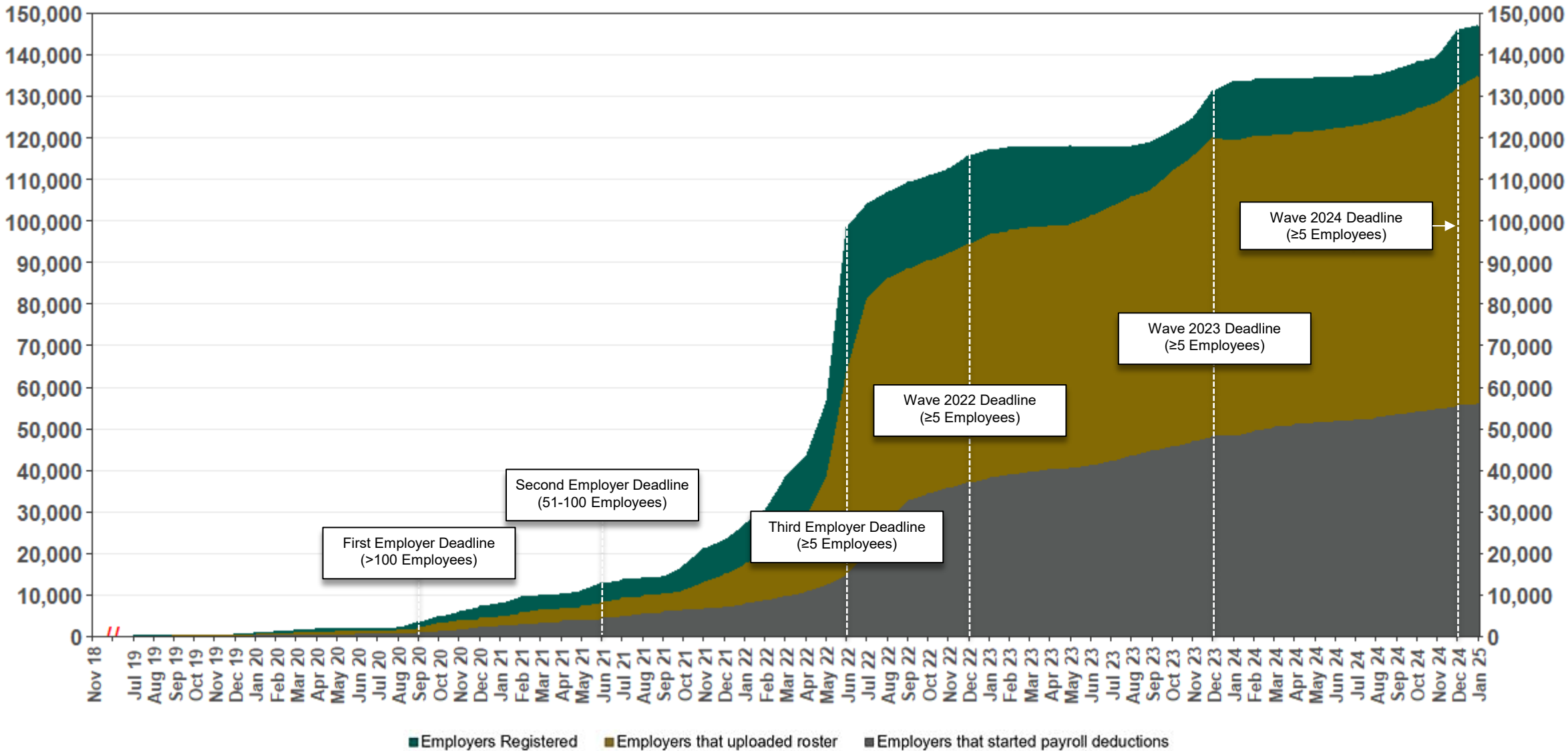


— Average monthly contribution amount (last 30 days) — Median monthly contribution amount (last 30 days)

The Program operated a limited scope pilot from November 2018 through June 2019 prior to full statewide launch on July 1, 2019.

Chart 6: Status of All Registered Employers

As of 1/31/25



The Program operated a limited scope pilot from November 2018 through June 2019 prior to full statewide launch on July 1, 2019.

Chart 7: Status of Post-Deadline Employers

As of 1/31/25

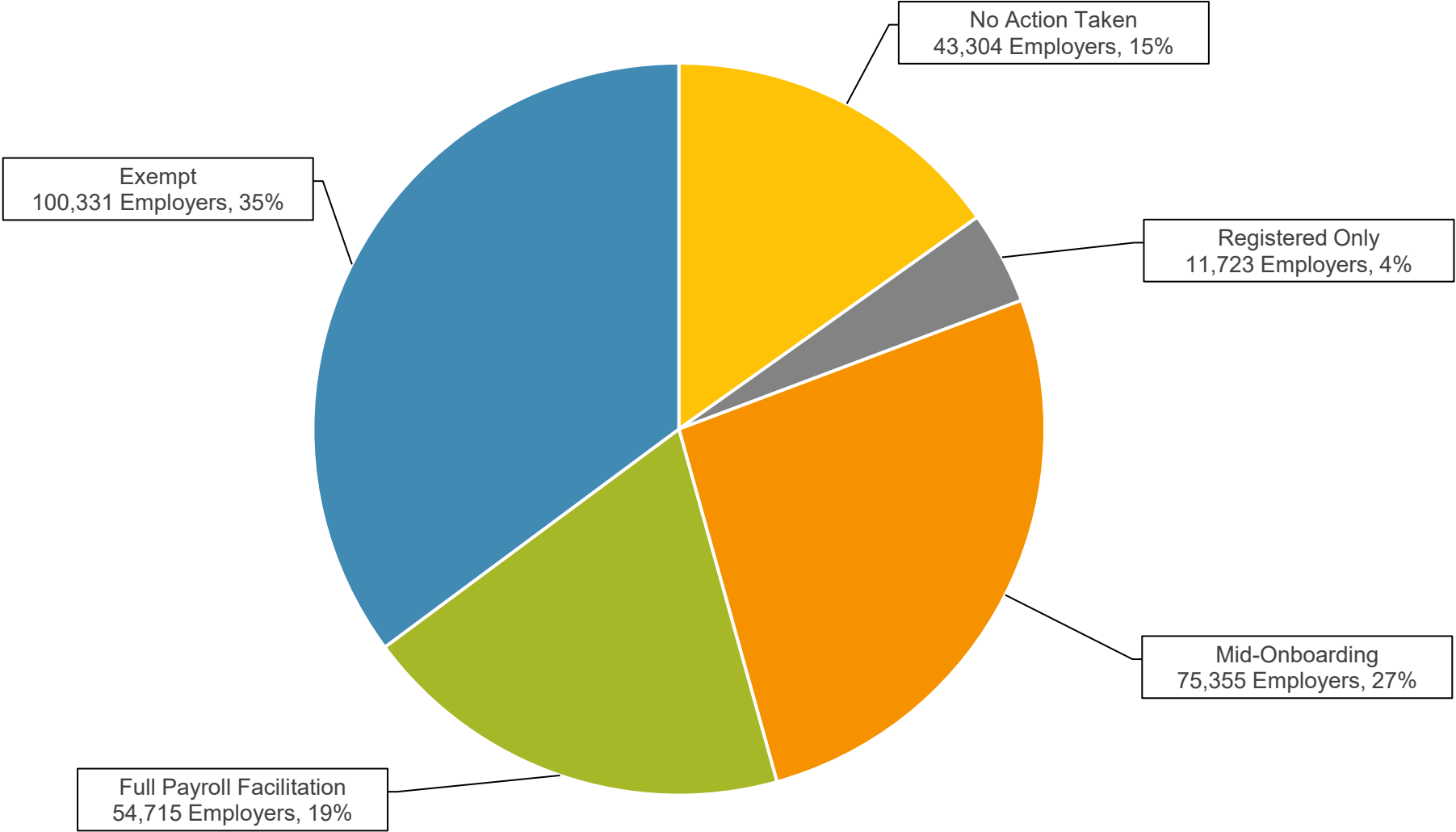
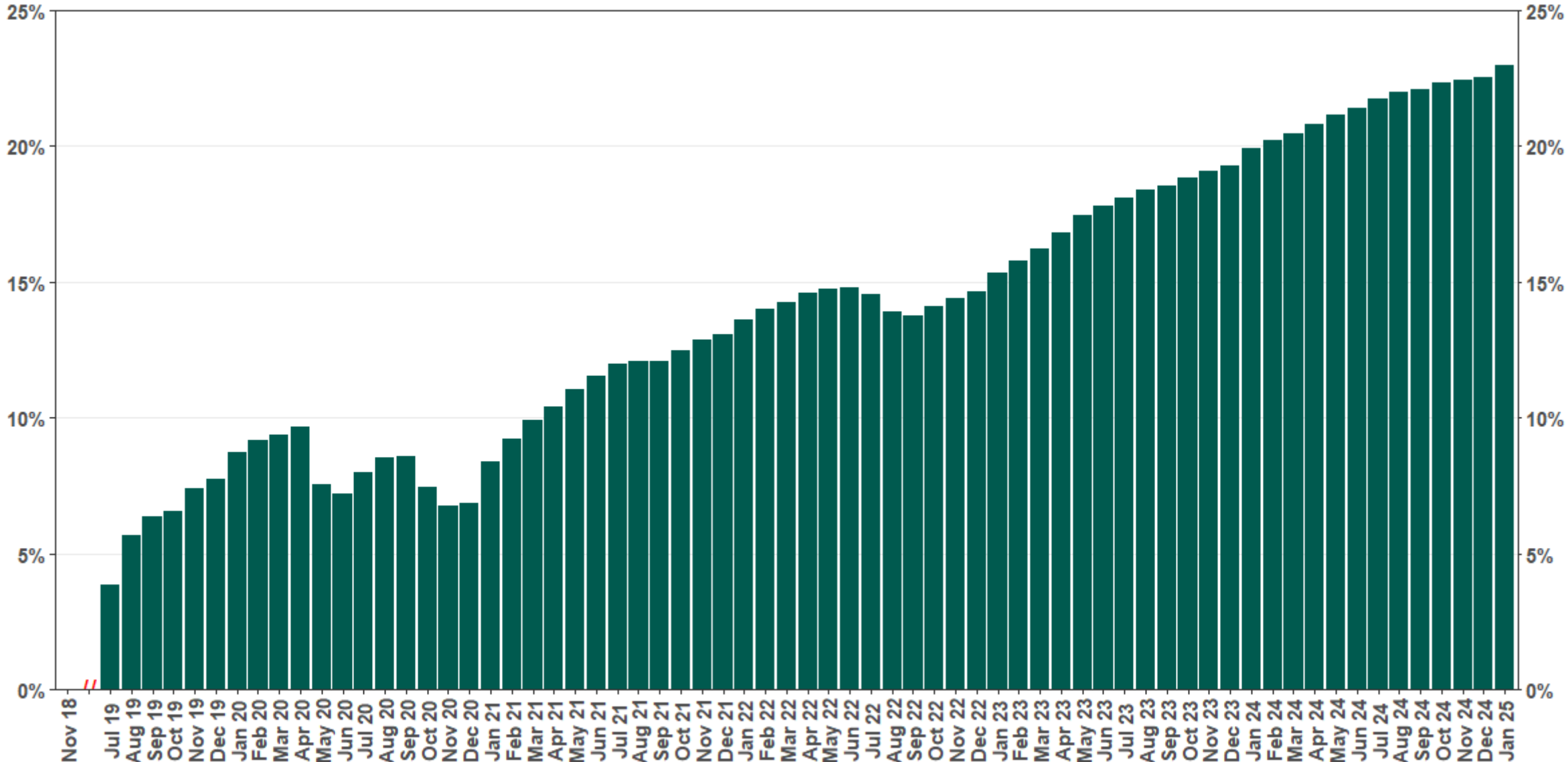


Chart 8: Accounts w/ Full Withdrawal as % of Payroll Contributing Accounts

As of 1/31/25



The Program operated a limited scope pilot from November 2018 through June 2019 prior to full statewide launch on July 1, 2019.