



CalSavers Retirement Savings Program Participation & Funding Snapshot as of 12/31/2024

Employer Registration Status Changes

Employer Status	12/31/2024	9/30/2024	Change	% Change
Registered	145,839	136,497	9,342	6.8%
Uploaded Roster	131,967	125,085	6,882	5.5%
Started Payroll Deductions	55,459	53,310	2,149	4.0%
Facilitated Deductions in last 90 days	39,126	38,417	709	1.8%
Exempt	109,434	117,854	-8,420	-7.1%

Participant Savings and Enrollment Changes

Participant Account Status	12/31/2024	9/30/2024	Change	% Change
Funded Accounts	539,110	531,673	7,437	1.4%
Payroll Contributing Accounts	617,016	593,809	23,207	3.9%
Multiple Employer Accounts*	92,129	87,543	4,586	5.2%
Self-Enrolled Funded Accounts	2,804	2,739	65	2.4%
Effective Opt-Out Rate	35.34%	35.84%	-0.50%	-1.4%

Status of Eligible Employers by Wave

Wave (Deadline)	Employers Registered	Employers Exempted	Total Employers Responded	Total Estimated Eligible Employers	Employer Response Rate
Post-Deadline Employers	132,332	89,457	221,789	242,193	91.6%
Wave 2024 (12/31/24)	8,622	8,668	17,290	43,230	40.0%
Wave 4 (12/31/25)	4,885	11,309	16,194	N/A	N/A
Total	145,839	109,434	255,273	285,423	89.4%

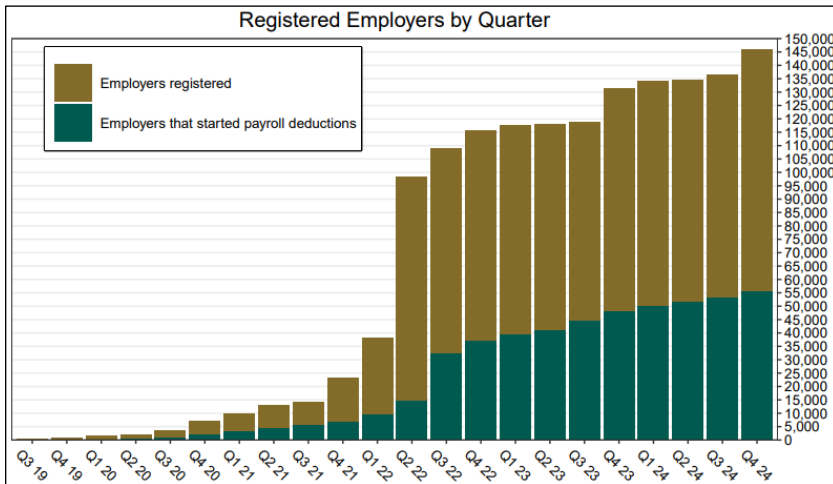
Funding Amounts and Withdrawals

Funding Amounts	12/31/2024	9/30/2024	Change	% Change
Total Assets	\$1,111,340,561	\$1,074,113,277	\$37,227,284	3.5%
Average Funded Account Balance	\$2,061	\$2,020	\$41	2.0%
Total Contributions Amount	\$1,292,695,774	\$1,187,975,932	\$104,719,842	8.8%
Average Monthly Contribution Amount	\$200	\$191	\$9	4.7%
Median Monthly Contribution Amount	\$150	\$147	\$3	2.0%
Average Contribution Rate	5.18%	5.19%	-0.01%	-0.2%
Amount of Withdrawals	\$317,207,000	\$278,475,917	\$38,731,083	13.9%
Accounts with a Full Withdrawal	139,160	131,234	7,926	6.0%
Accounts with a Partial Withdrawal	24,342	21,990	2,352	10.7%
Withdrawal Rate**	22.55%	22.10%	0.45%	2.0%

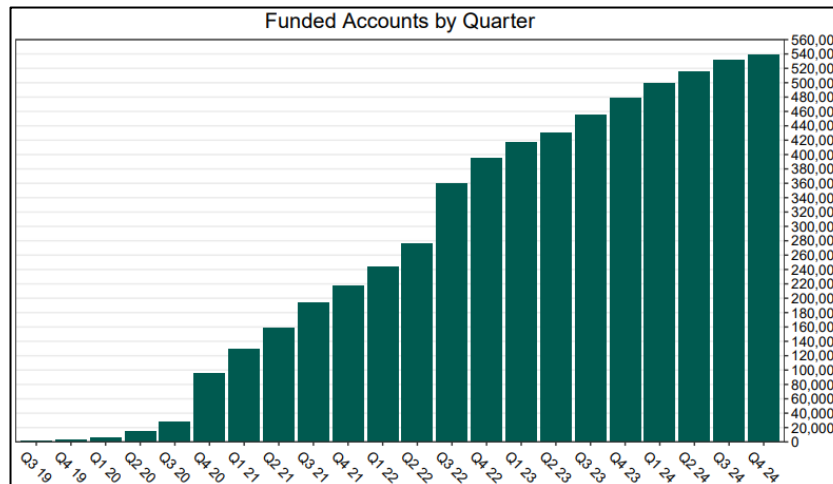
* This data point reflects the number of funded account holders associated with more than one registered employer

** Withdrawal Rate is calculated as Accounts with a full withdrawal as a percent of Payroll Contributing Accounts

Registered Employers by Quarter



Funded Accounts by Quarter



Total Assets by Quarter (millions)

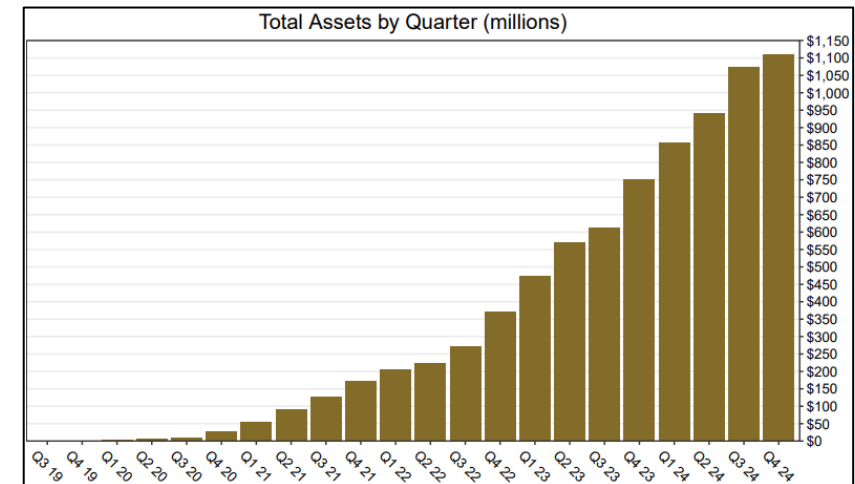
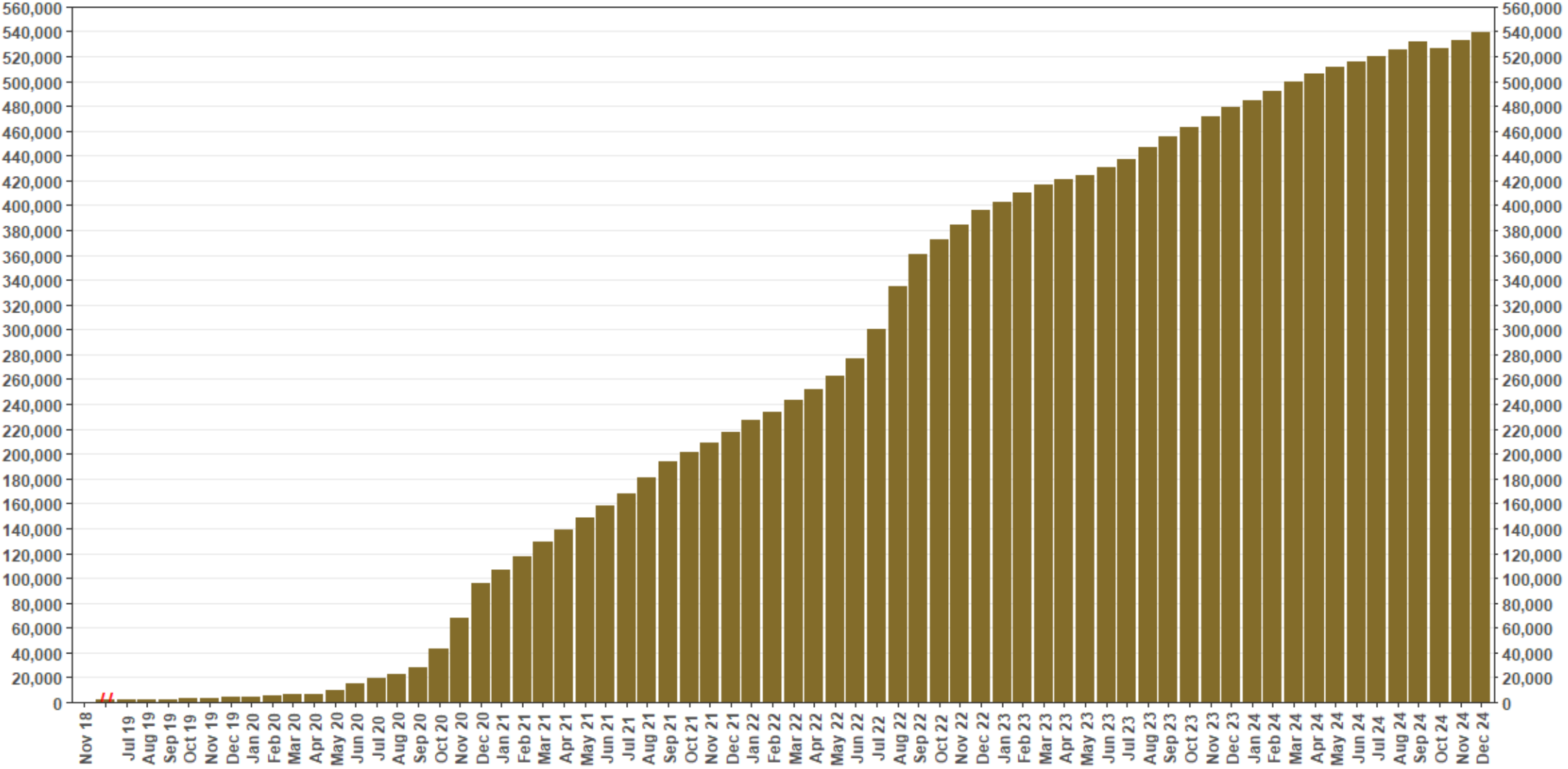


Chart 1: Funded Accounts

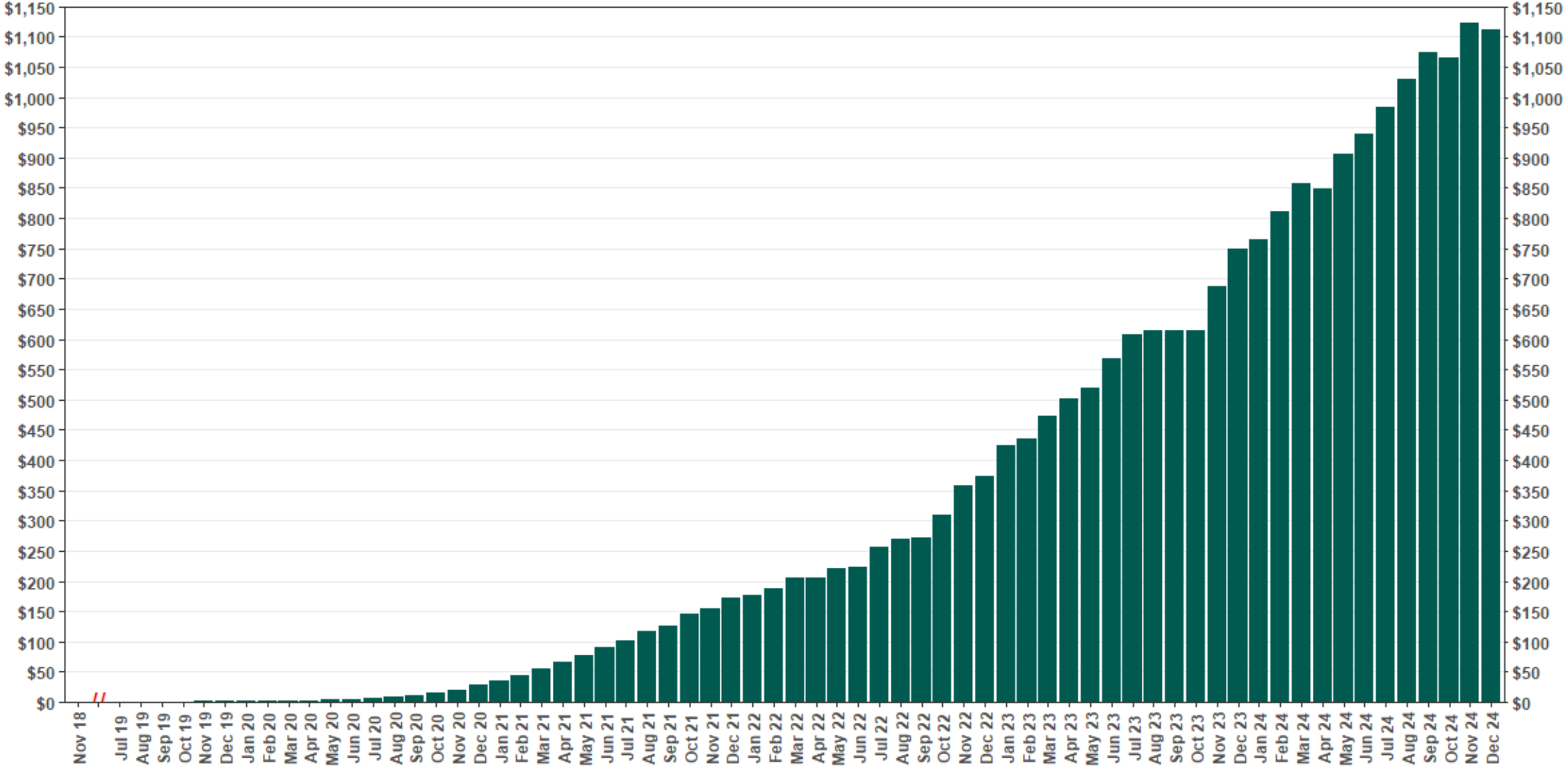
As of 12/31/24



The Program operated a limited scope pilot from November 2018 through June 2019 prior to full statewide launch on July 1, 2019.

Chart 2: Total Assets (millions)

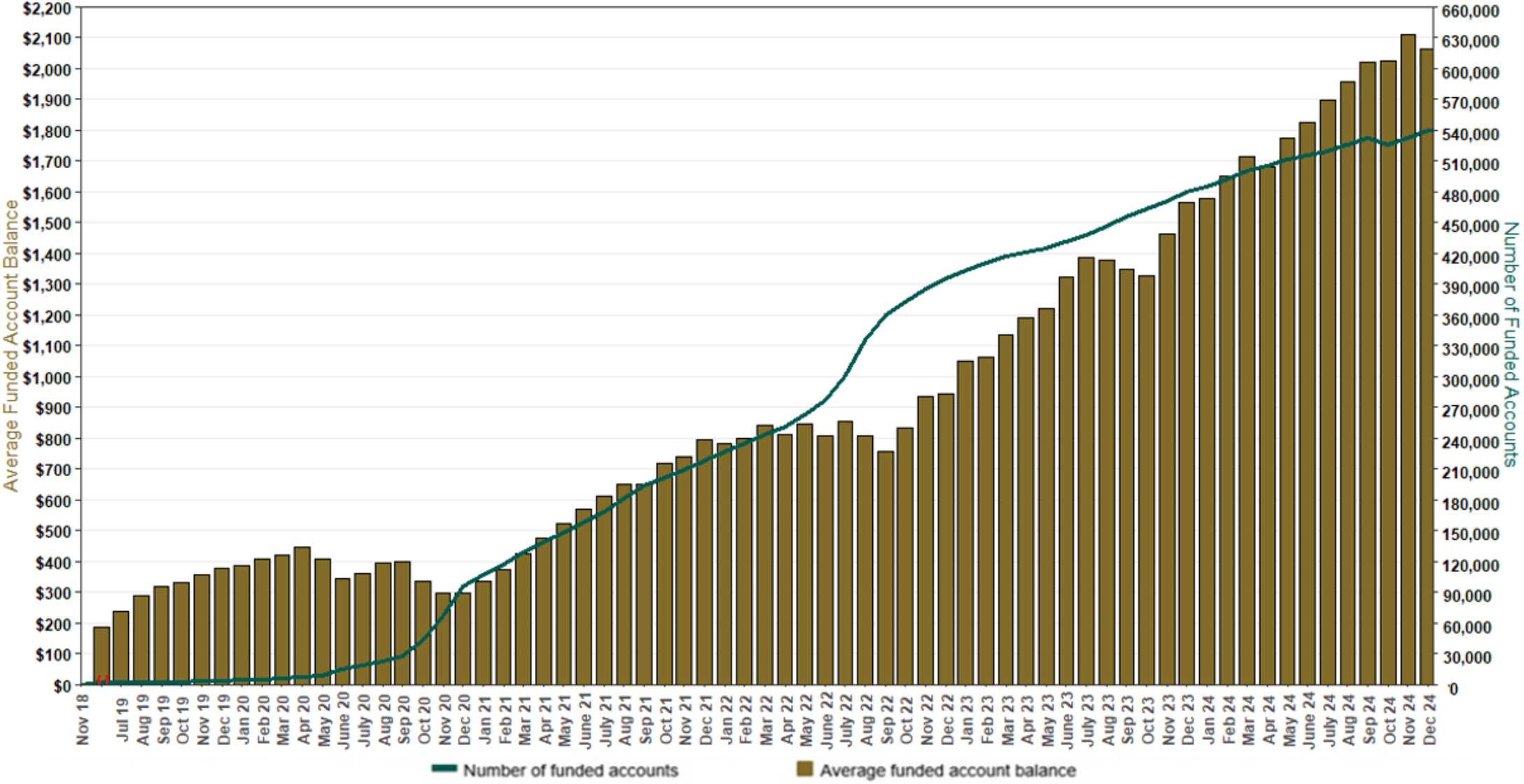
As of 12/31/24



The Program operated a limited scope pilot from November 2018 through June 2019 prior to full statewide launch on July 1, 2019.

Chart 3: Average Funded Account Balance

As of 12/31/24



The Program operated a limited scope pilot from November 2018 through June 2019 prior to full statewide launch on July 1, 2019.

Chart 4: Distribution of Accounts by Balance

As of 12/31/24

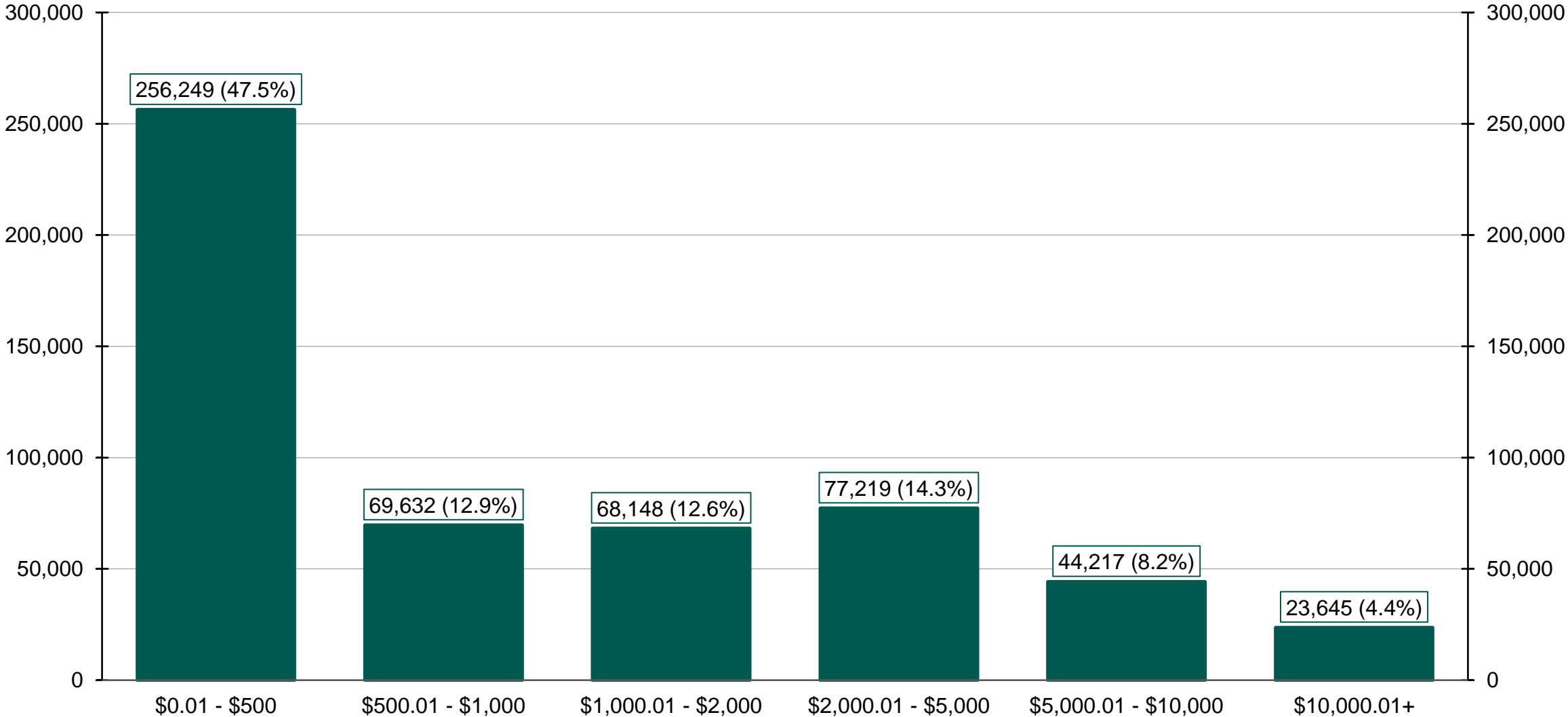
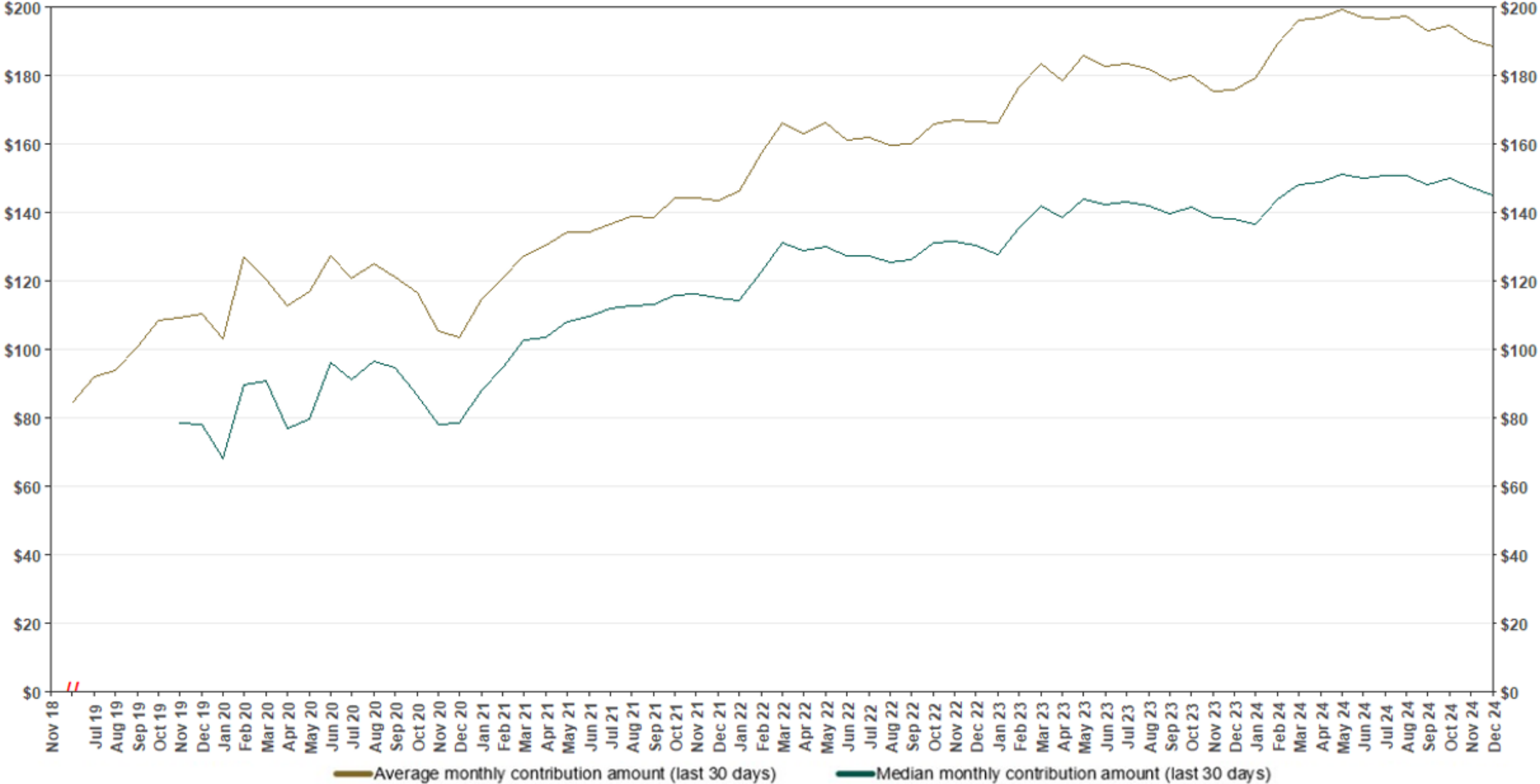


Chart 5: Monthly Contributions Per Saver

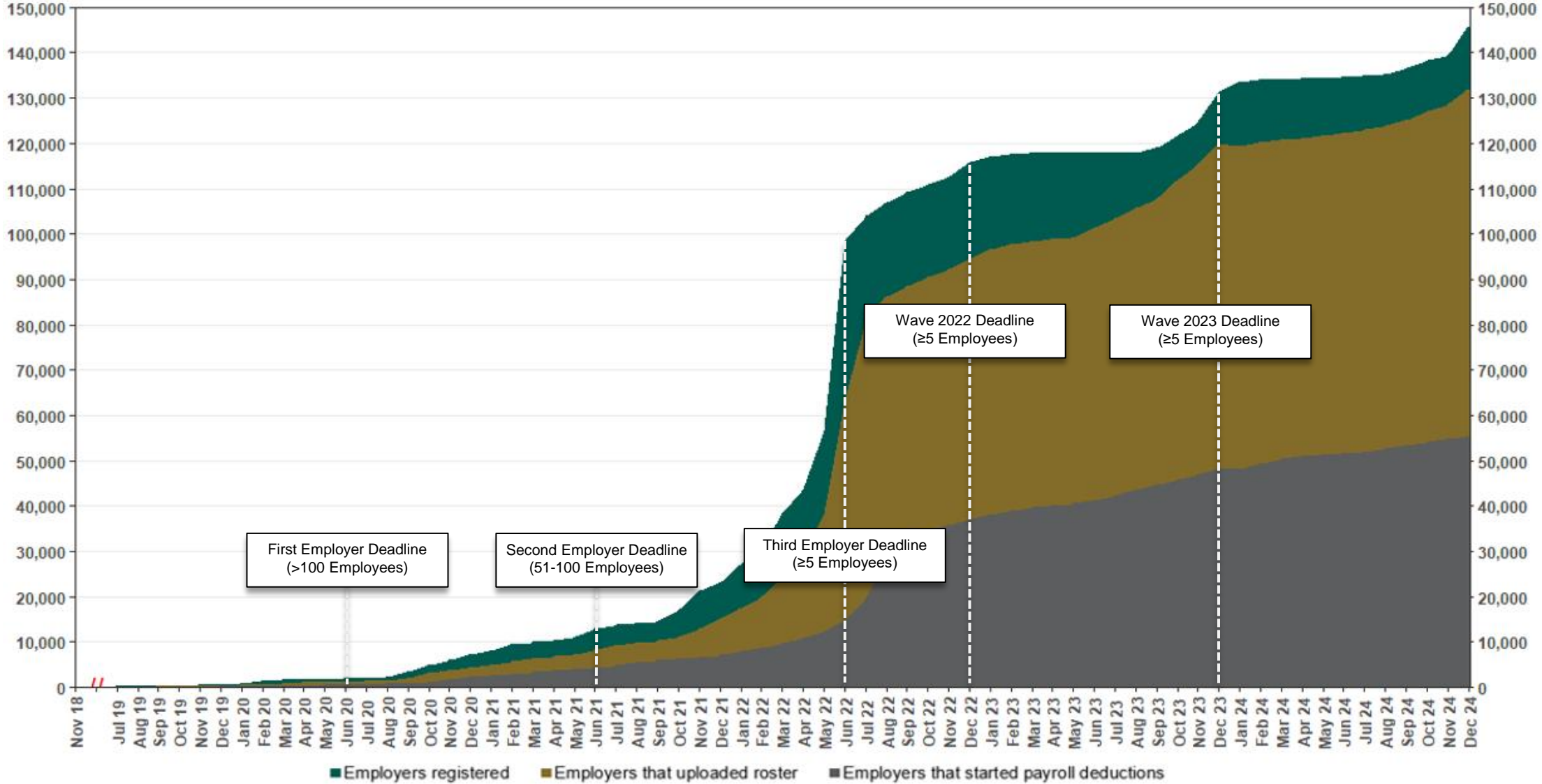
As of 12/31/24



The Program operated a limited scope pilot from November 2018 through June 2019 prior to full statewide launch on July 1, 2019.

Chart 6: Status of All Registered Employers

As of 12/31/24



The Program operated a limited scope pilot from November 2018 through June 2019 prior to full statewide launch on July 1, 2019.

Chart 7: Status of Post-Deadline Employers

As of 12/31/24

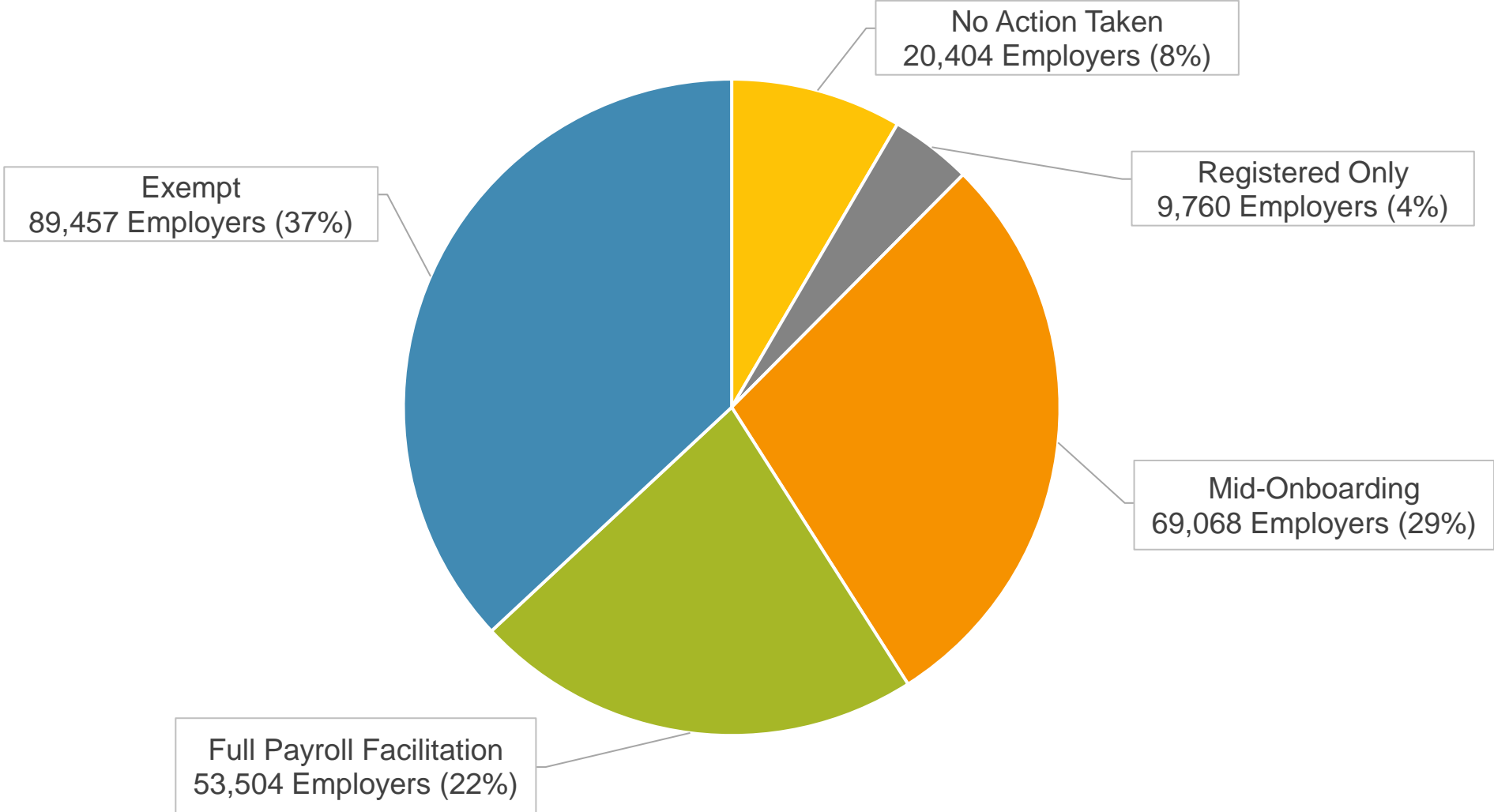
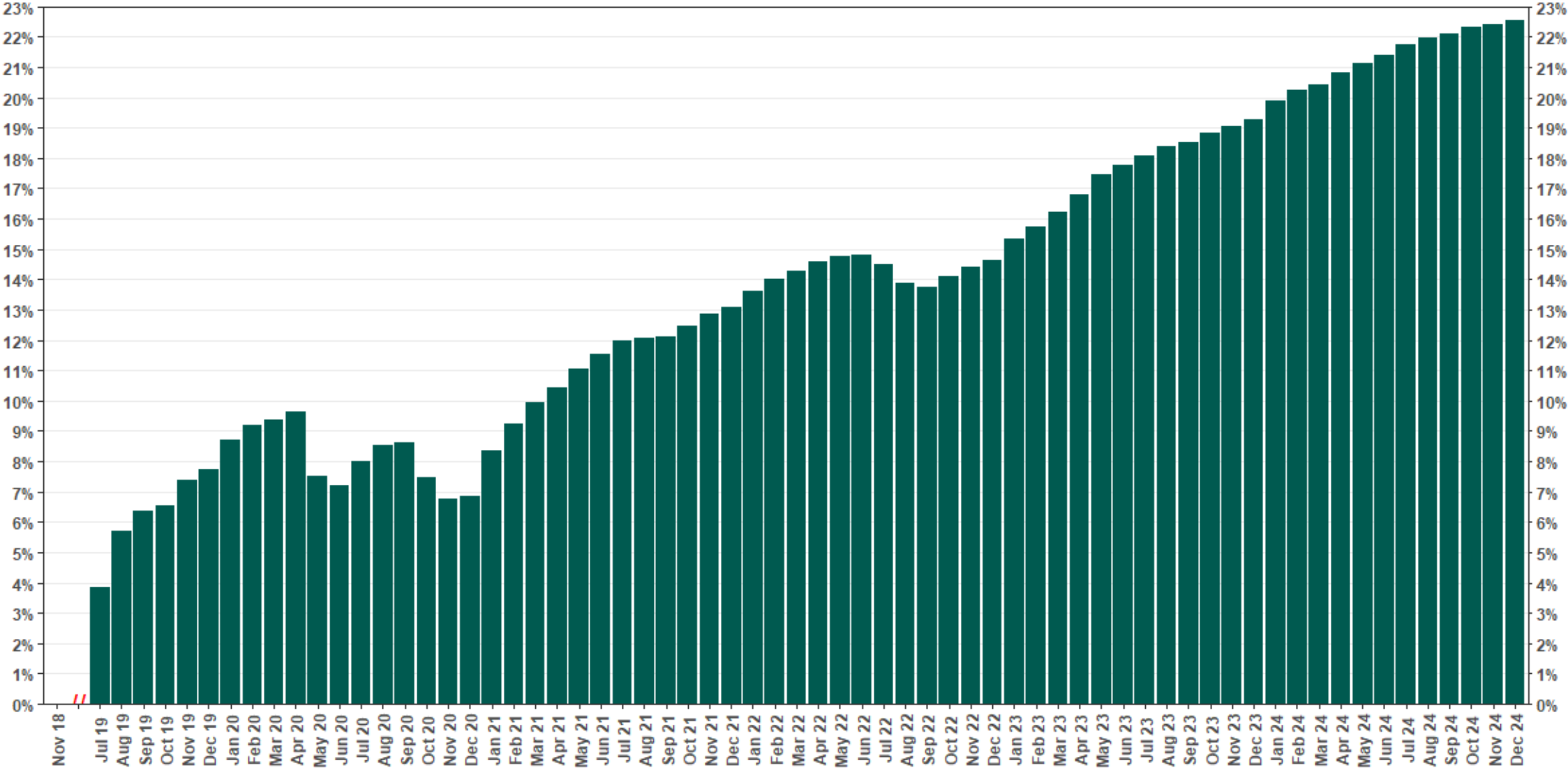


Chart 8: Accounts w/ Full Withdrawal as % of Payroll Contributing Accounts

As of 12/31/24



The Program operated a limited scope pilot from November 2018 through June 2019 prior to full statewide launch on July 1, 2019.