



CalSavers Retirement Savings Program Participation & Funding Snapshot as of 6/30/2024

Employer Registration Status Changes

Employer Status	6/30/2024	3/31/2024	Change	% Change
Registered	134,595	134,175	420	0.3%
Uploaded Roster	122,358	120,737	1,621	1.3%
Started Payroll Deductions	51,709	50,316	1,393	2.8%
Facilitated Deductions in last 90 days	38,622	39,061	-439	-1.1%
Exempt	129,816	127,912	1,904	1.5%

Participant Savings and Enrollment Changes

Participant Account Status	6/30/2024	3/31/2024	Change	% Change
Funded Accounts	515,941	499,722	16,219	3.2%
Payroll Contributing Accounts	574,911	554,551	20,360	3.7%
Multiple Employer Accounts*	83,152	78,582	4,570	5.8%
Self-Enrolled Funded Accounts	2,586	2,322	264	11.4%
Effective Opt-Out Rate	36.01%	36.32%	-0.31%	-0.9%

Status of Eligible Employers by Wave

Wave (Deadline)	Employers Registered	Employers Exempted	Total Employers Responded	Total Estimated Eligible Employers	Employer Response Rate
Post-Deadline Employers	131,583	120,002	251,585	281,807	89.3%
Wave 2024 (12/31/24)	33	3	36	N/A	N/A
Wave 4 (12/31/25)	2,979	9,811	12,790	N/A	N/A
Total	134,595	129,816	264,411	281,807	93.8%

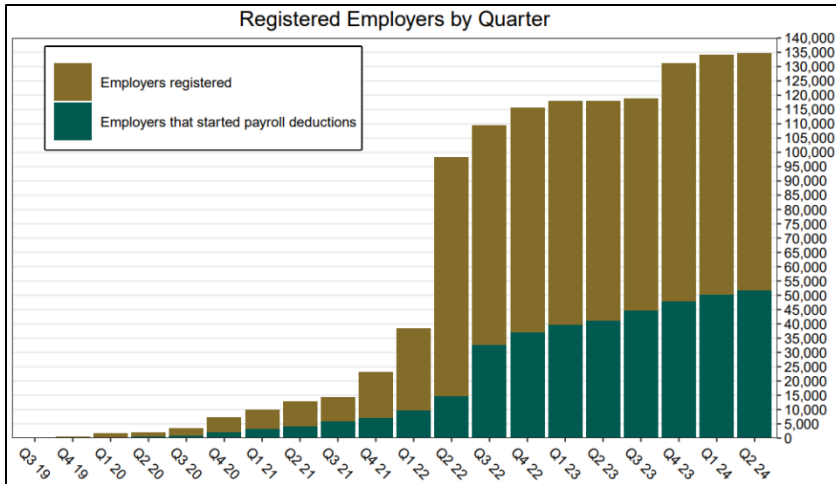
* This data point reflects the number of funded account holders associated with more than one registered employer

** Withdrawal Rate is calculated as Accounts with a full withdrawal as a percent of Payroll Contributing Accounts

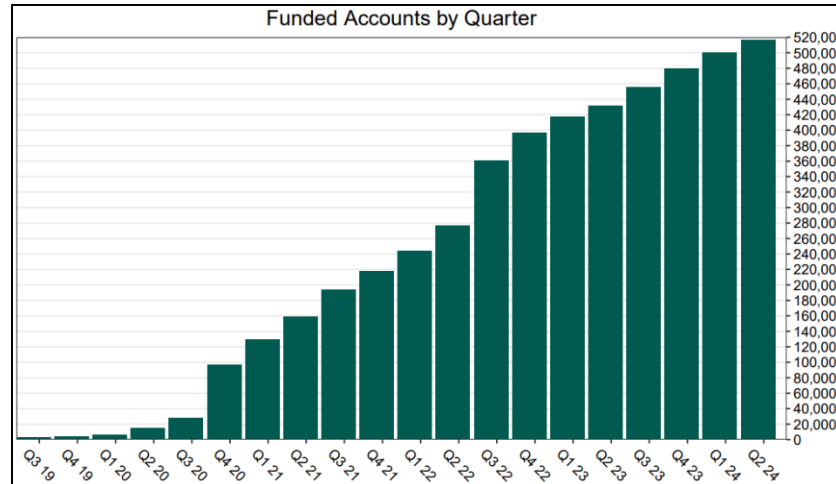
Funding Amounts and Withdrawals

Funding Amounts	6/30/2024	3/31/2024	Change	% Change
Total Assets	\$940,562,084	\$857,021,031	\$83,541,053	9.7%
Average Funded Account Balance	\$1,823	\$1,715	\$108	6.3%
Total Contributions Amount	\$1,080,791,473	\$968,095,914	\$112,695,559	11.6%
Average Monthly Contribution Amount	\$188	\$175	\$13	7.4%
Median Monthly Contribution Amount	\$145	\$131	\$14	10.7%
Average Contribution Rate	5.20%	5.22%	-0.02%	-0.4%
Amount of Withdrawals	\$240,990,119	\$202,599,937	\$38,390,182	18.9%
Accounts with a Full Withdrawal	122,914	113,346	9,568	8.4%
Accounts with a Partial Withdrawal	19,602	17,173	2,429	14.1%
Withdrawal Rate**	21.38%	20.44%	0.94%	4.6%

Registered Employers by Quarter



Funded Accounts by Quarter



Total Assets by Quarter (millions)

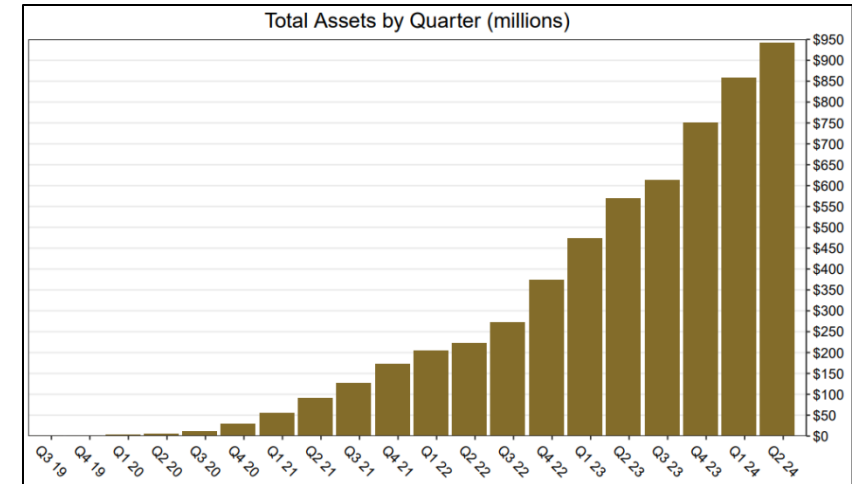
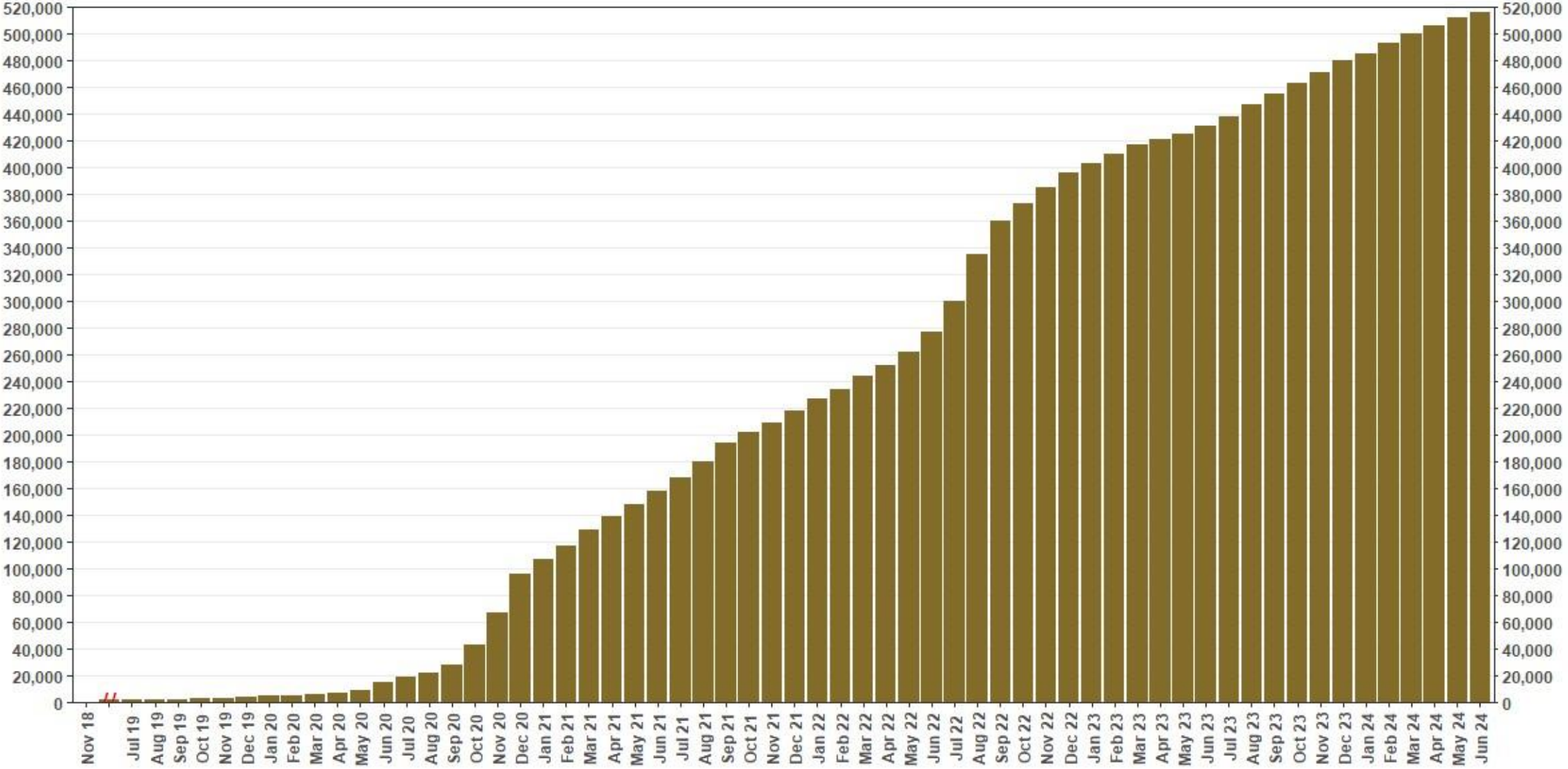


Chart 1: Funded Accounts

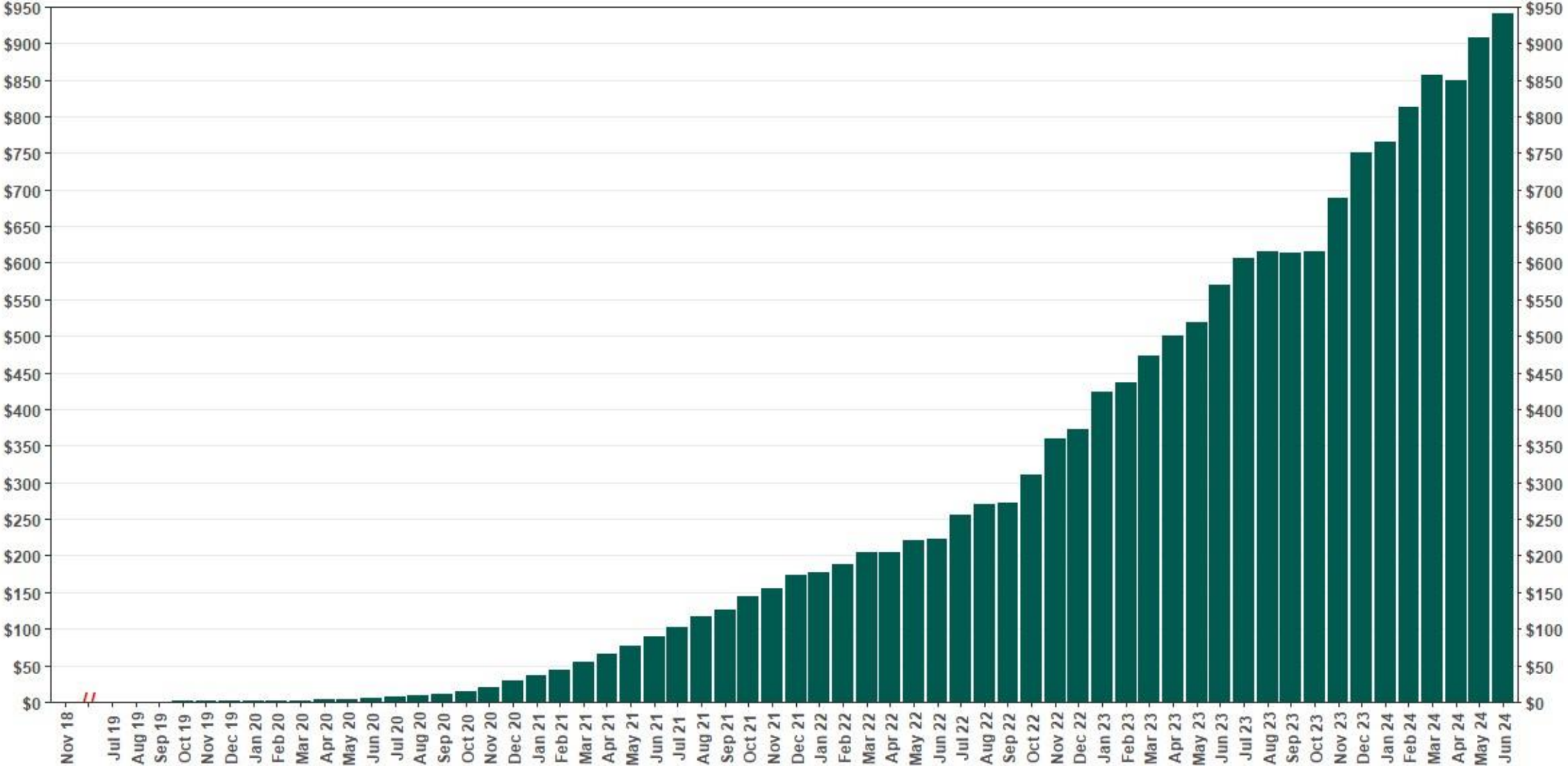
As of 6/30/24



The Program operated a limited scope pilot from November 2018 through June 2019 prior to full statewide launch on July 1, 2019.

Chart 2: Total Assets (millions)

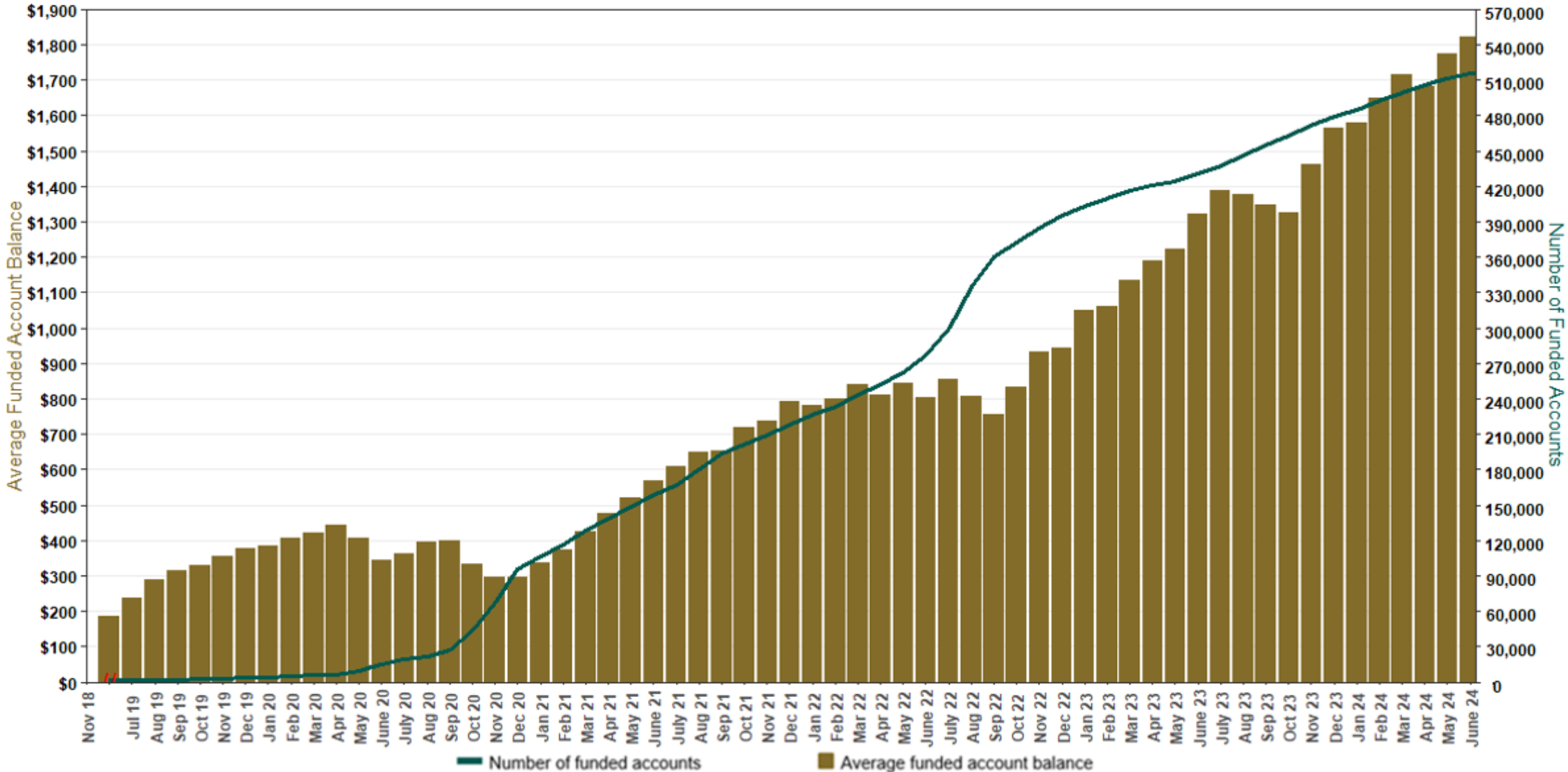
As of 6/30/24



The Program operated a limited scope pilot from November 2018 through June 2019 prior to full statewide launch on July 1, 2019.

Chart 3: Average Funded Account Balance

As of 6/30/24



The Program operated a limited scope pilot from November 2018 through June 2019 prior to full statewide launch on July 1, 2019.

Chart 4: Distribution of Accounts by Balance

As of 6/30/24

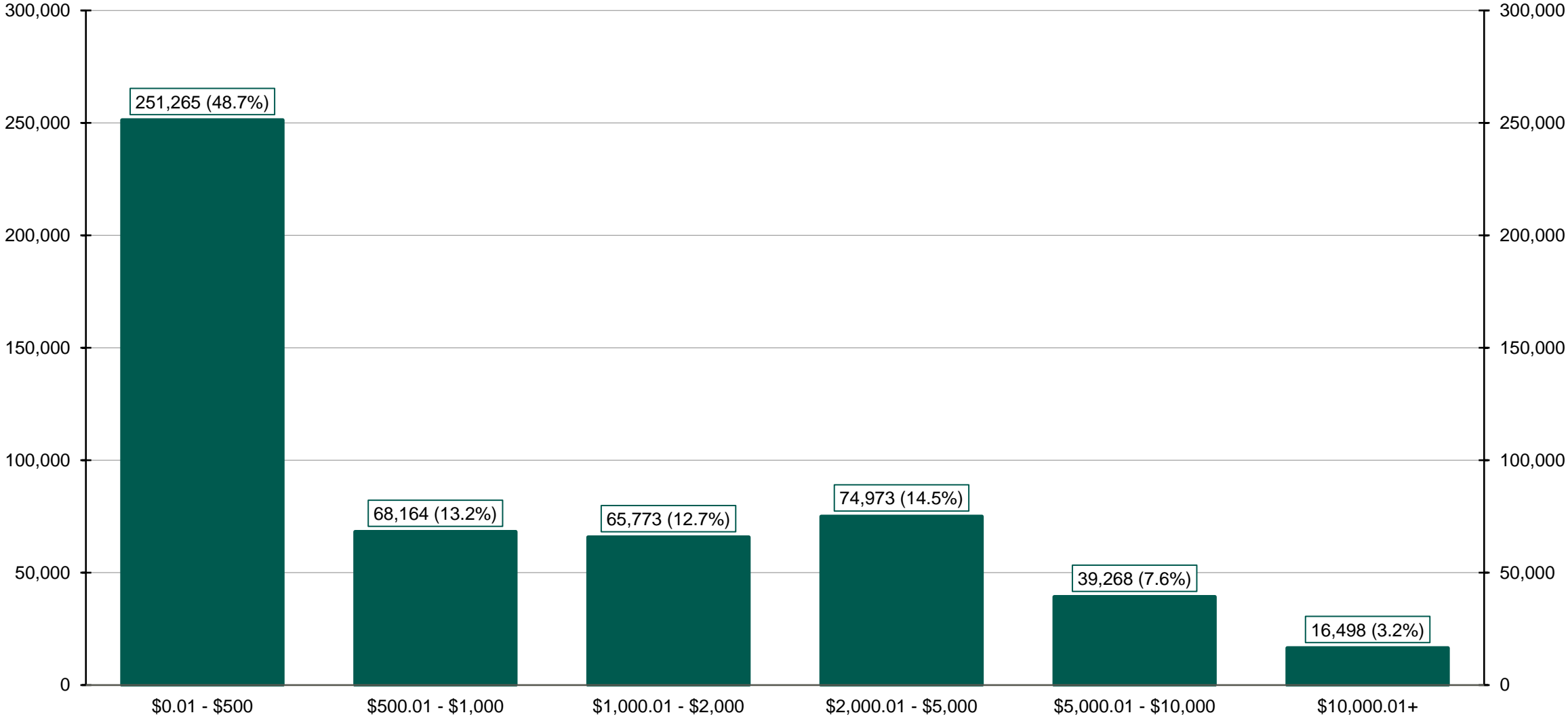
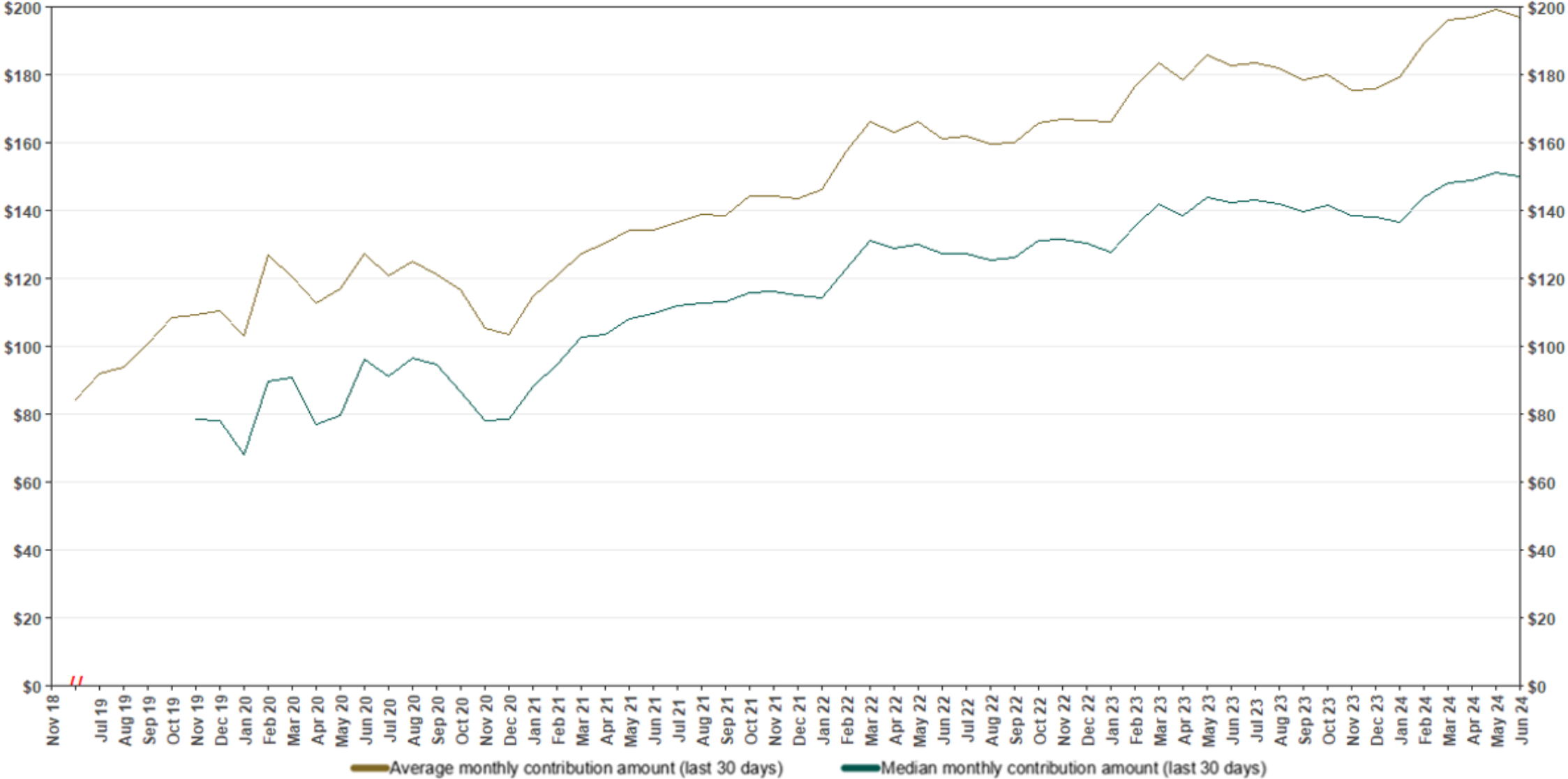


Chart 5: Monthly Contributions Per Saver

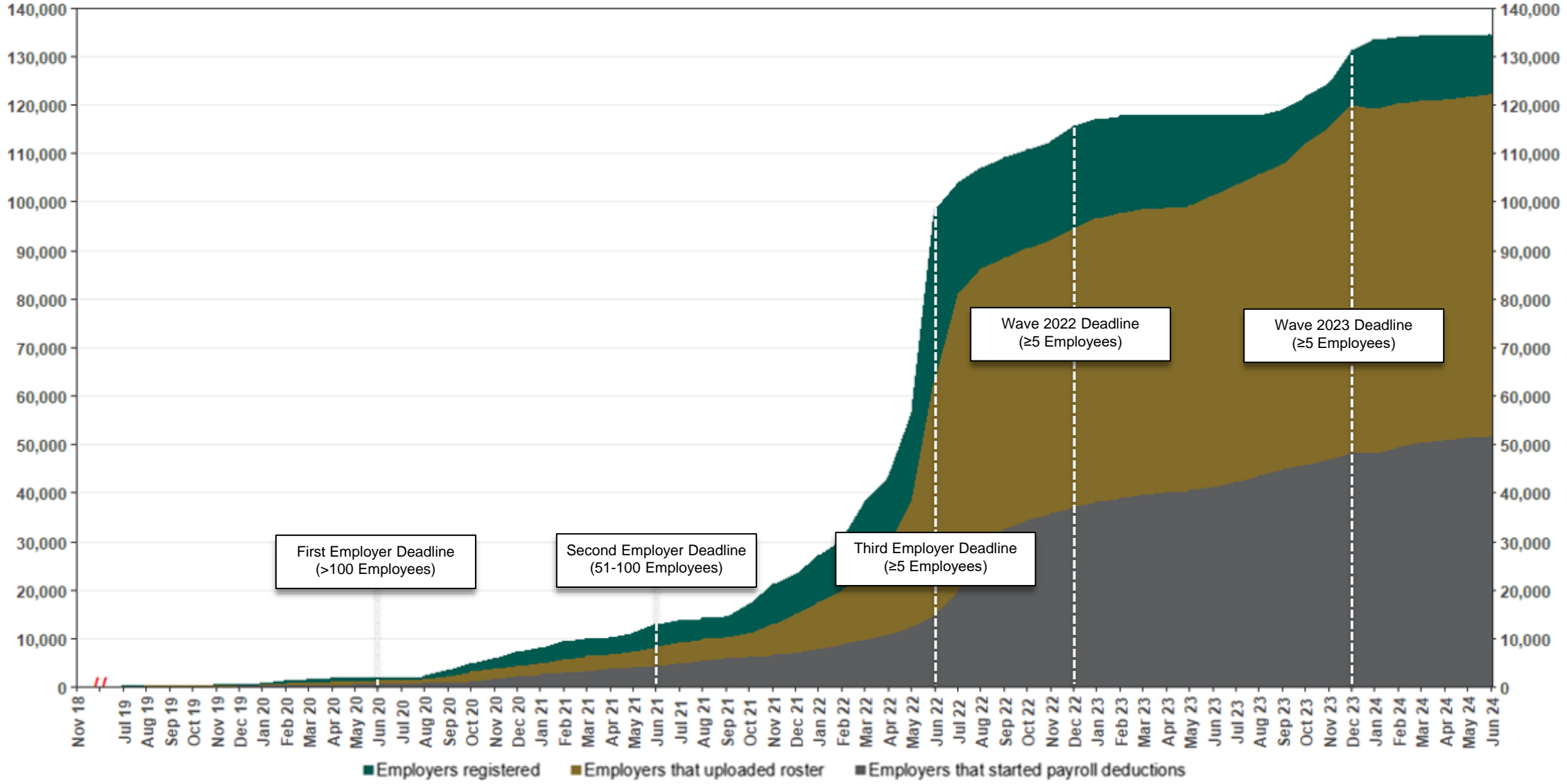
As of 6/30/24



The Program operated a limited scope pilot from November 2018 through June 2019 prior to full statewide launch on July 1, 2019.

Chart 6: Status of All Registered Employers

As of 6/30/24



The Program operated a limited scope pilot from November 2018 through June 2019 prior to full statewide launch on July 1, 2019.

Chart 7: Status of Post-Deadline Employers

As of 6/30/24

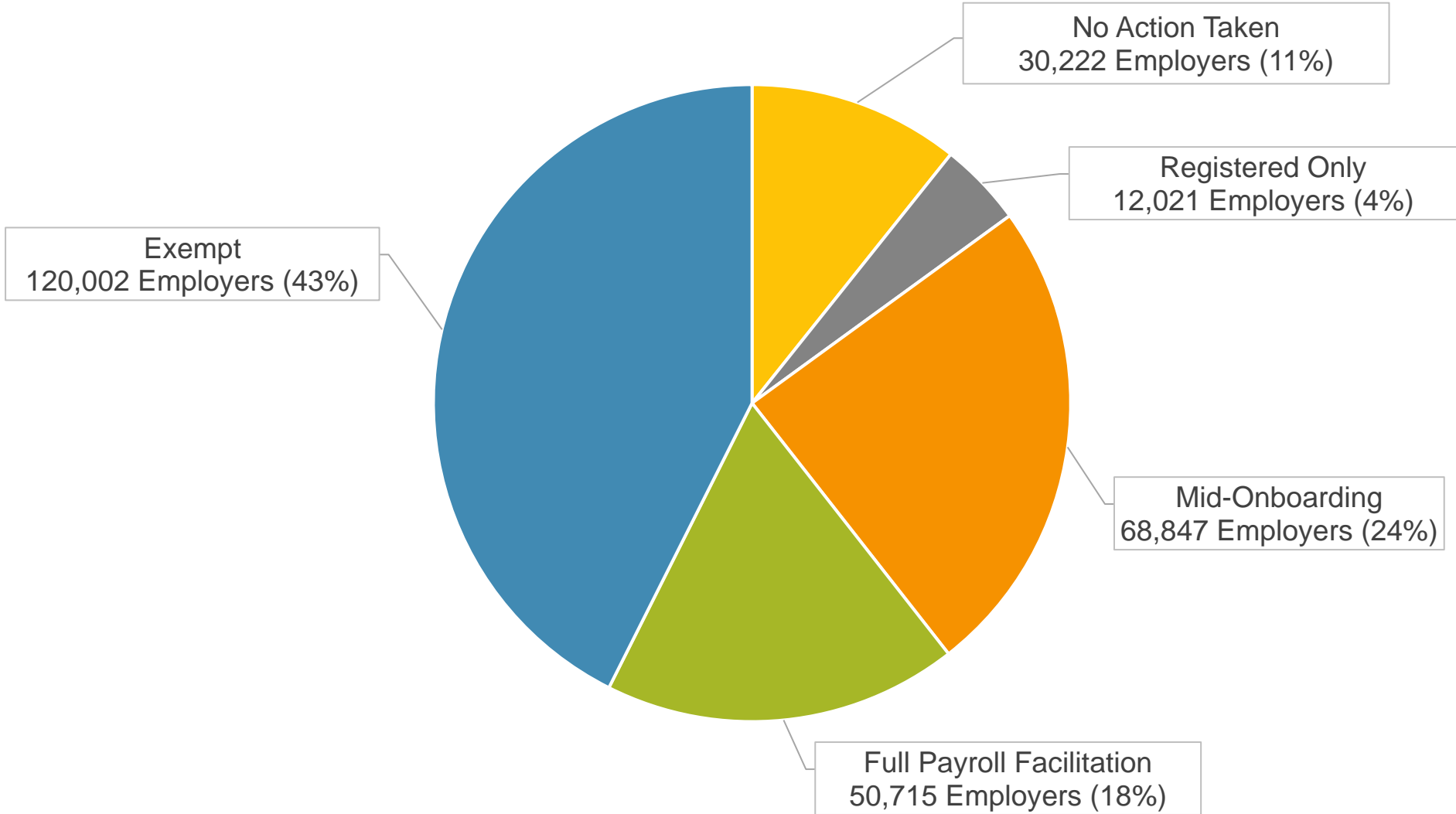
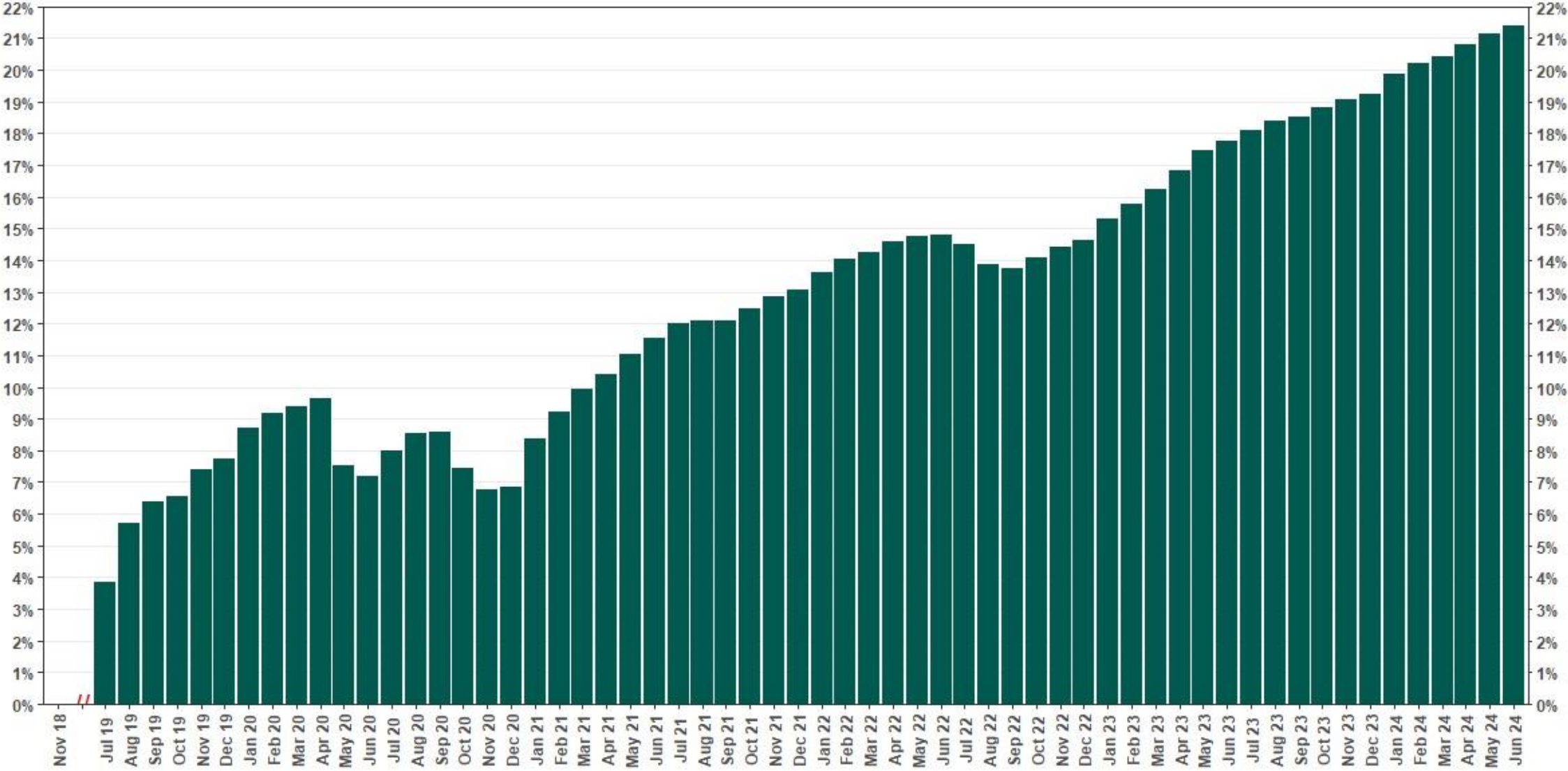


Chart 8: Accounts w/ Full Withdrawal as % of Payroll Contributing Accounts

As of 6/30/24



The Program operated a limited scope pilot from November 2018 through June 2019 prior to full statewide launch on July 1, 2019.