



# CalSavers Retirement Savings Program Participation & Funding Snapshot as of 11/30/2024

### Employer Registration Status Changes

Employer Status	11/30/2024	8/31/2024	Change	% Change
Registered	139,484	135,202	4,282	3.2%
Uploaded Roster	128,529	123,834	4,695	3.8%
Started Payroll Deductions	54,732	52,573	2,159	4.1%
Facilitated Deductions in last 90 days	38,876	38,368	508	1.3%
Exempt	104,107	131,573	-27,466	-20.9%

### Participant Savings and Enrollment Changes

Participant Account Status	11/30/2024	8/31/2024	Change	% Change
Funded Accounts	532,346	525,616	6,730	1.3%
Payroll Contributing Accounts	609,604	586,353	23,251	4.0%
Multiple Employer Accounts*	89,848	85,423	4,425	5.2%
Self-Enrolled Funded Accounts	2,775	2,695	80	3.0%
Effective Opt-Out Rate	35.67%	35.93%	-0.26%	-0.7%

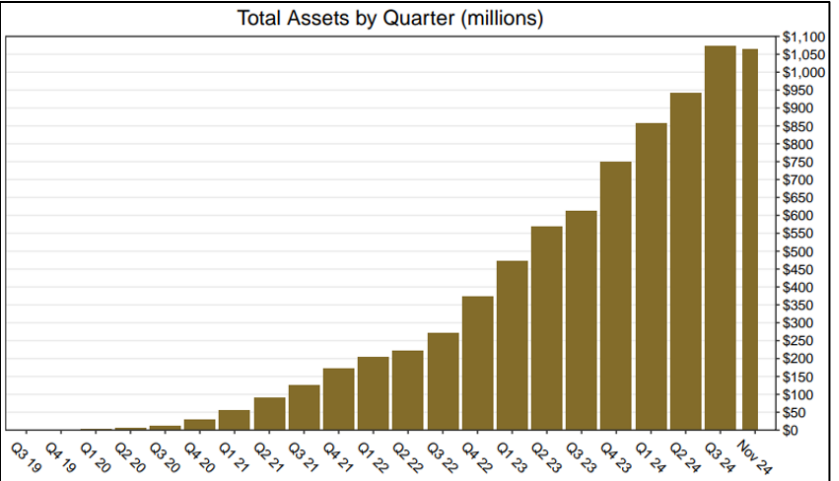
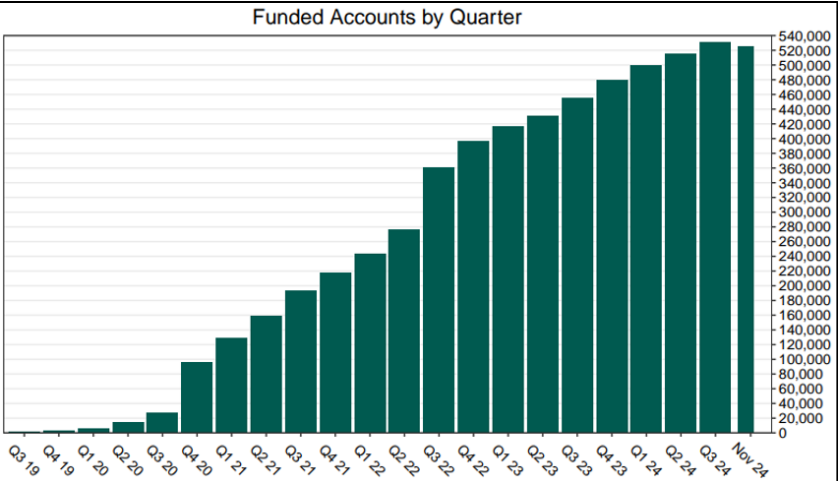
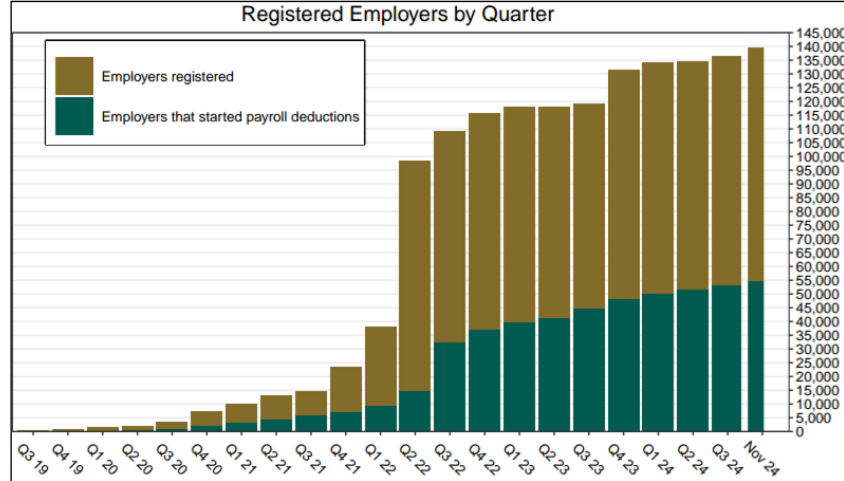
### Status of Eligible Employers by Wave

Wave (Deadline)	Employers Registered	Employers Exempted	Total Employers Responded	Total Estimated Eligible Employers	Employer Response Rate
Post-Deadline Employers	132,277	89,139	221,416	242,169	91.4%
Wave 2024 (12/31/24)	3,097	3,846	6,943	43,231	16.1%
Wave 4 (12/31/25)	4,110	11,122	15,232	N/A	N/A
<b>Total</b>	139,484	104,107	243,591	285,400	85.4%

### Funding Amounts and Withdrawals

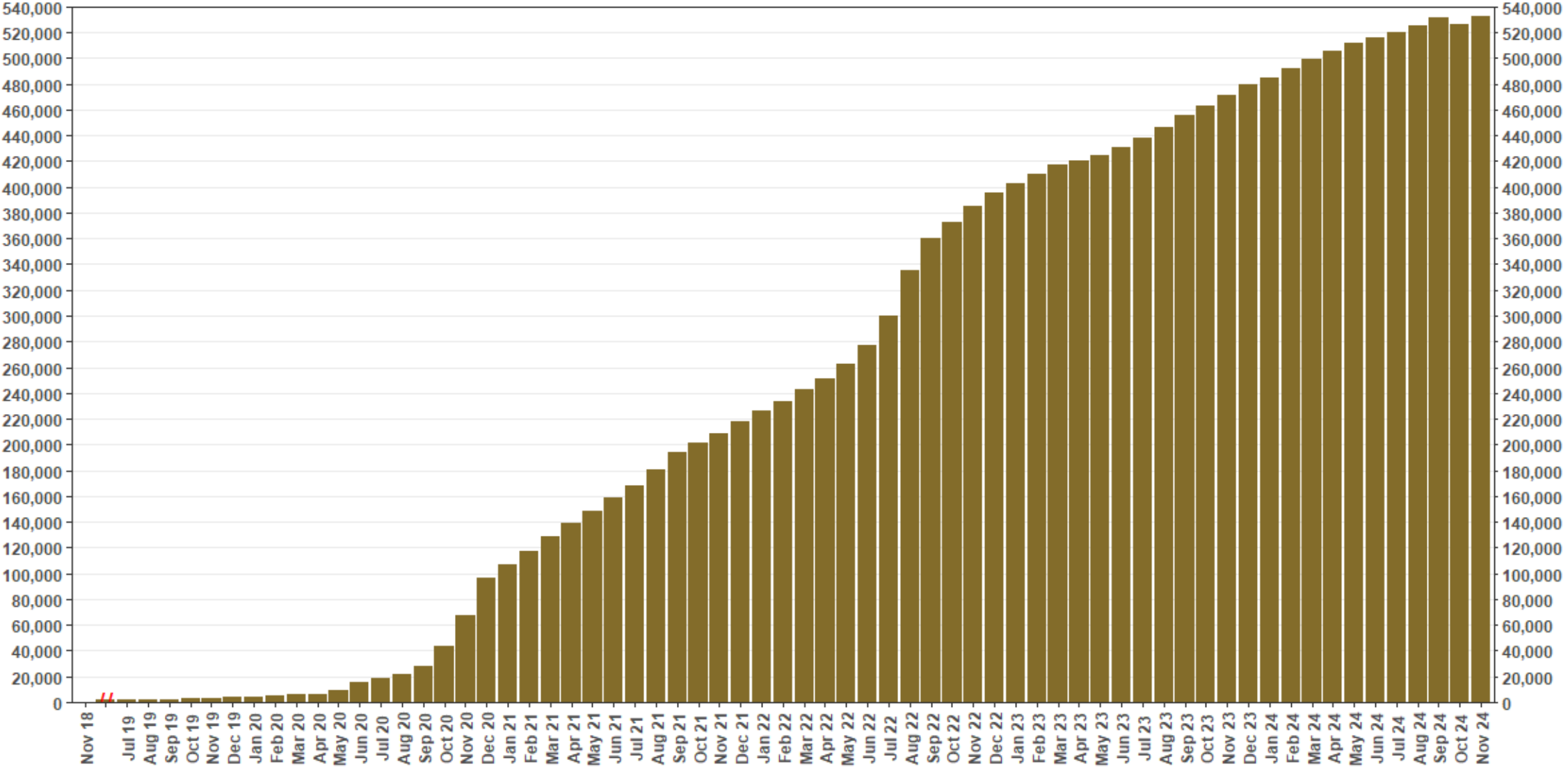
Funding Amounts	11/30/2024	8/31/2024	Change	% Change
Total Assets	\$1,123,260,733	\$1,029,472,426	\$93,788,307	9.1%
Average Funded Account Balance	\$2,110	\$1,959	\$151	7.7%
Total Contributions Amount	\$1,257,251,535	\$1,153,979,878	\$103,271,657	8.9%
Average Monthly Contribution Amount	\$188	\$197	-\$9	-4.6%
Median Monthly Contribution Amount	\$146	\$151	-\$5	-3.3%
Average Contribution Rate	5.18%	5.20%	-0.02%	-0.4%
Amount of Withdrawals	\$304,572,544	\$266,963,635	\$37,608,909	14.1%
Accounts with a Full Withdrawal	136,757	128,848	7,909	6.1%
Accounts with a Partial Withdrawal	23,612	21,283	2,329	10.9%
Withdrawal Rate**	22.43%	21.97%	0.46%	2.1%

\* This data point reflects the number of funded account holders associated with more than one registered employer  
 \*\* Withdrawal Rate is calculated as Accounts with a full withdrawal as a percent of Payroll Contributing Accounts



# Chart 1: Funded Accounts

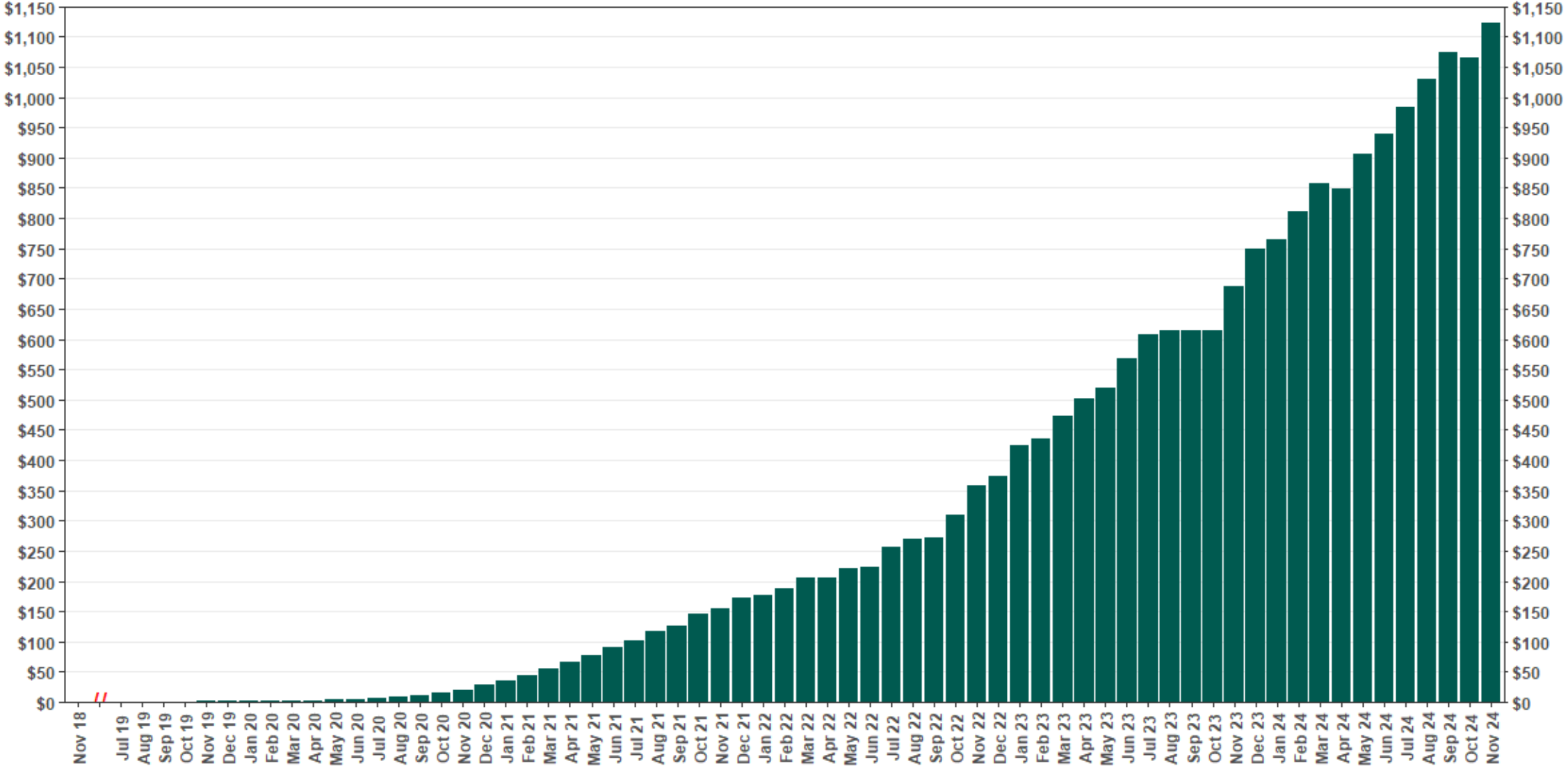
As of 11/30/24



The Program operated a limited scope pilot from November 2018 through June 2019 prior to full statewide launch on July 1, 2019.

# Chart 2: Total Assets (millions)

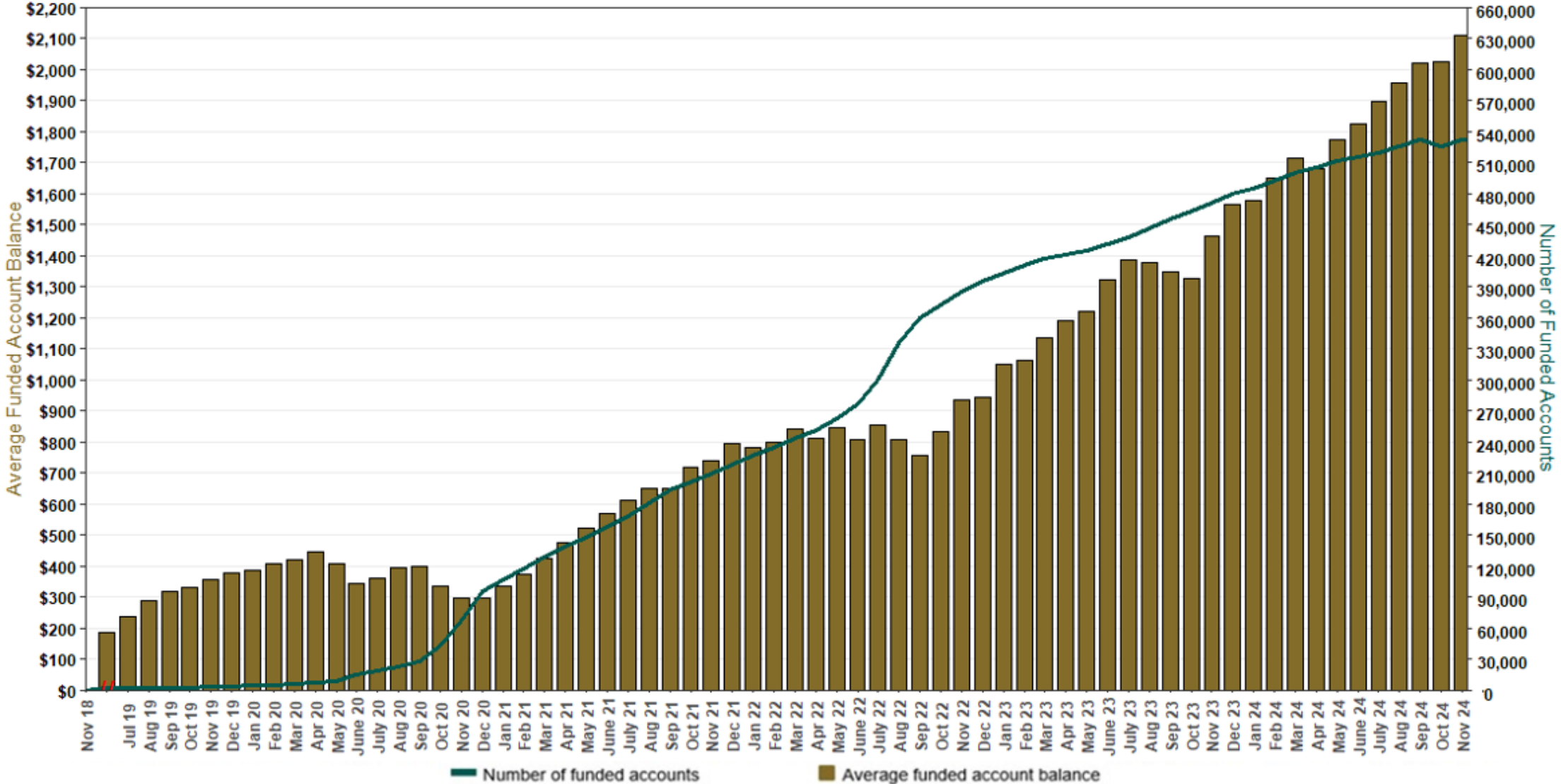
As of 11/30/24



The Program operated a limited scope pilot from November 2018 through June 2019 prior to full statewide launch on July 1, 2019.

# Chart 3: Average Funded Account Balance

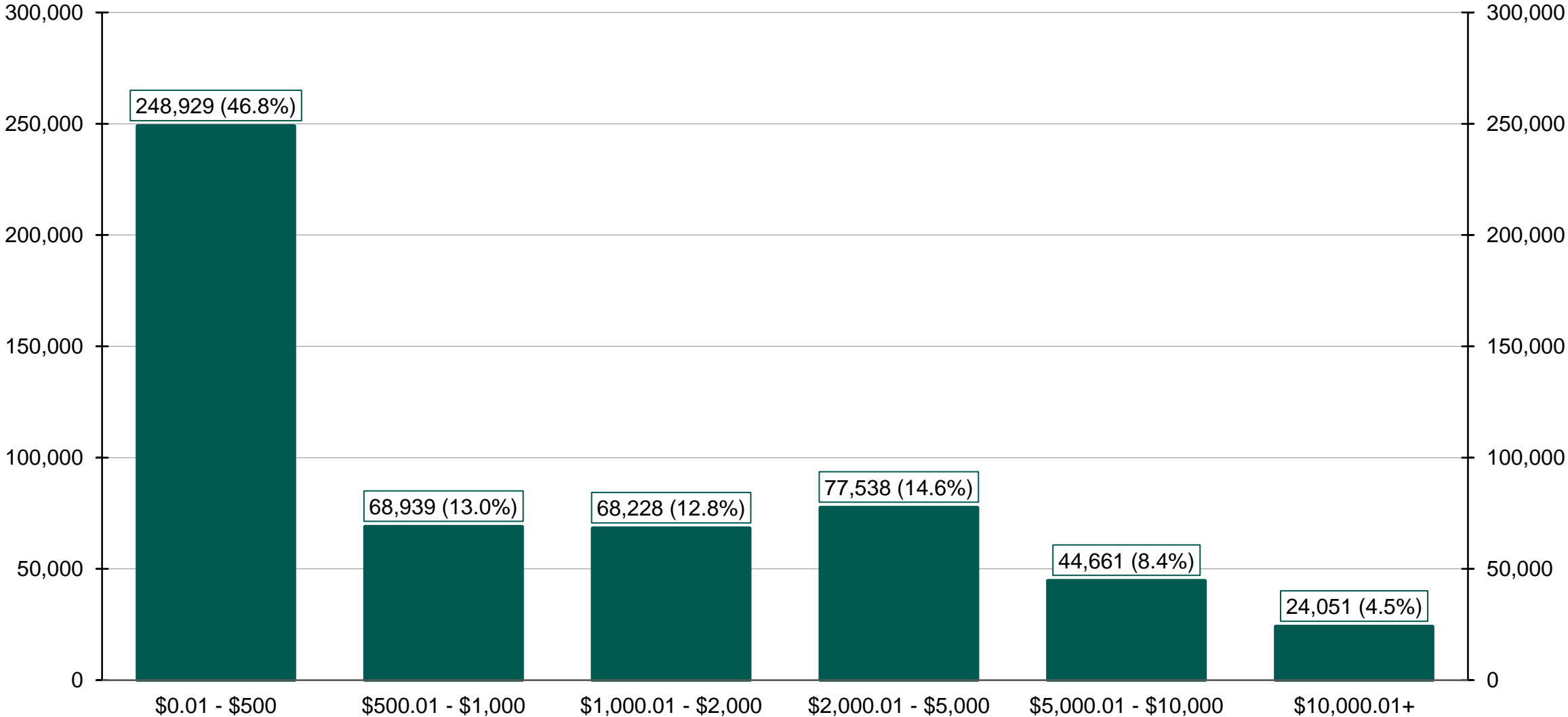
As of 11/30/24



The Program operated a limited scope pilot from November 2018 through June 2019 prior to full statewide launch on July 1, 2019.

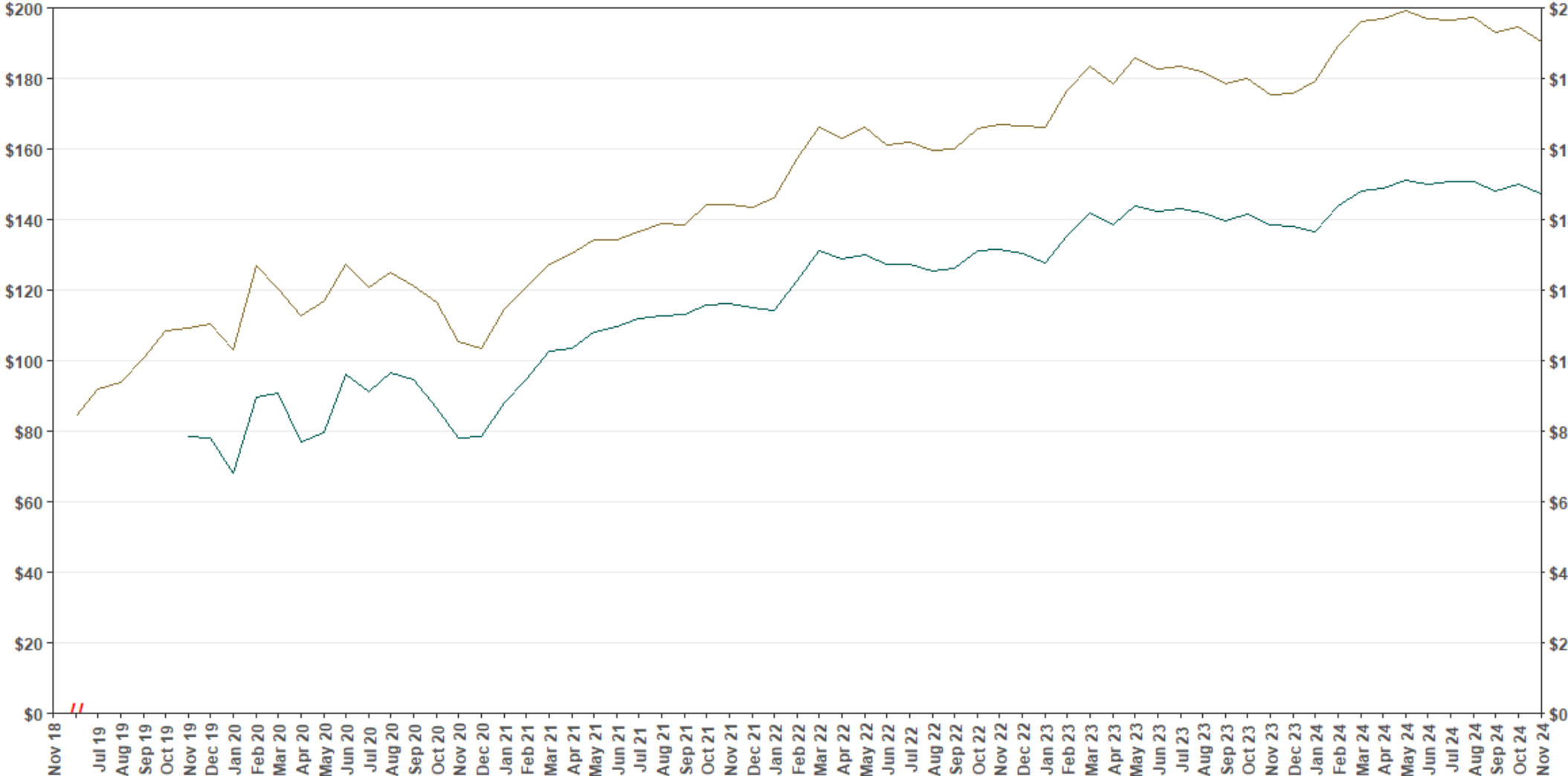
# Chart 4: Distribution of Accounts by Balance

As of 11/30/24



# Chart 5: Monthly Contributions Per Saver

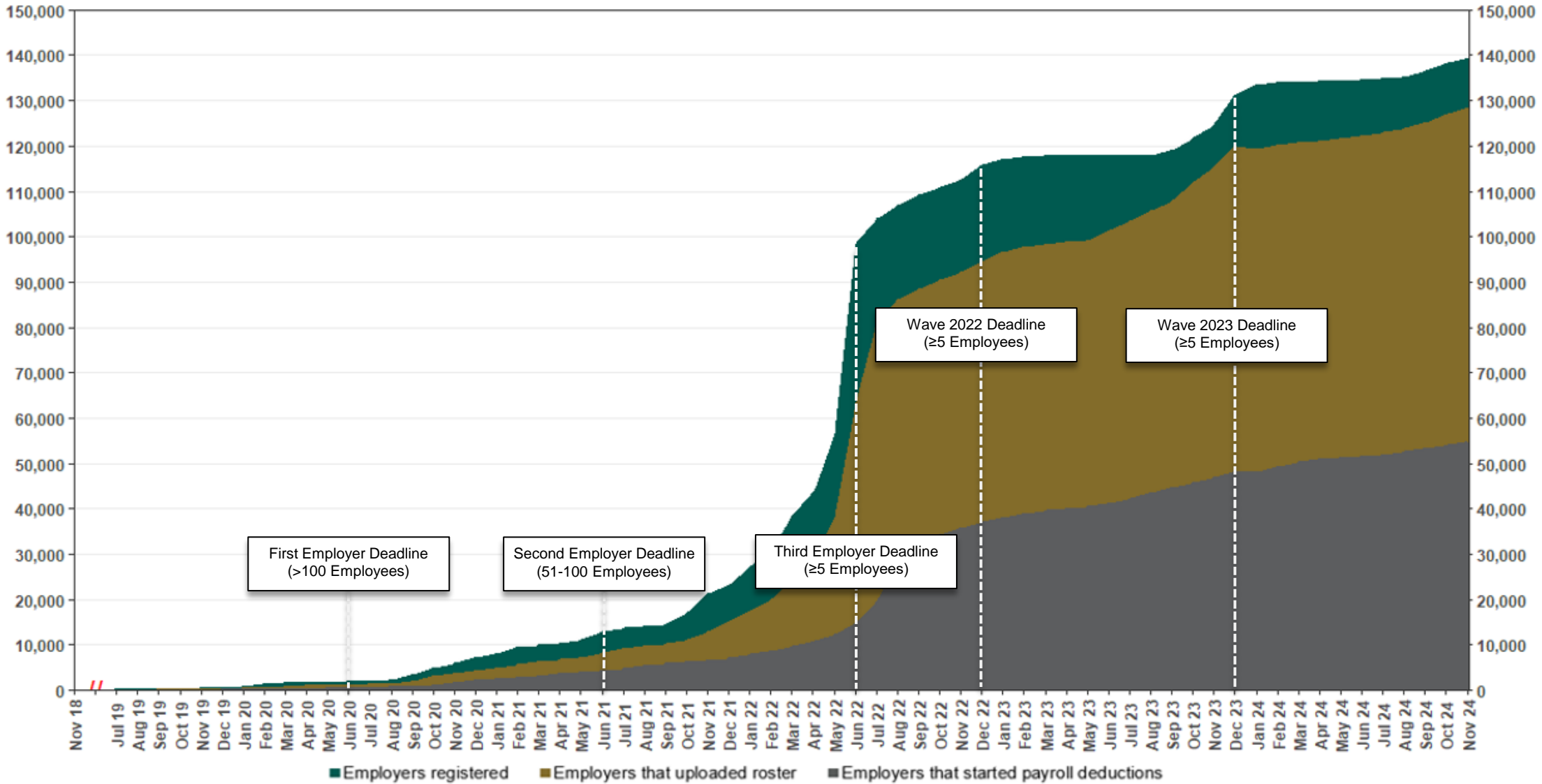
As of 11/30/24



The Program operated a limited scope pilot from November 2018 through June 2019 prior to full statewide launch on July 1, 2019.

# Chart 6: Status of All Registered Employers

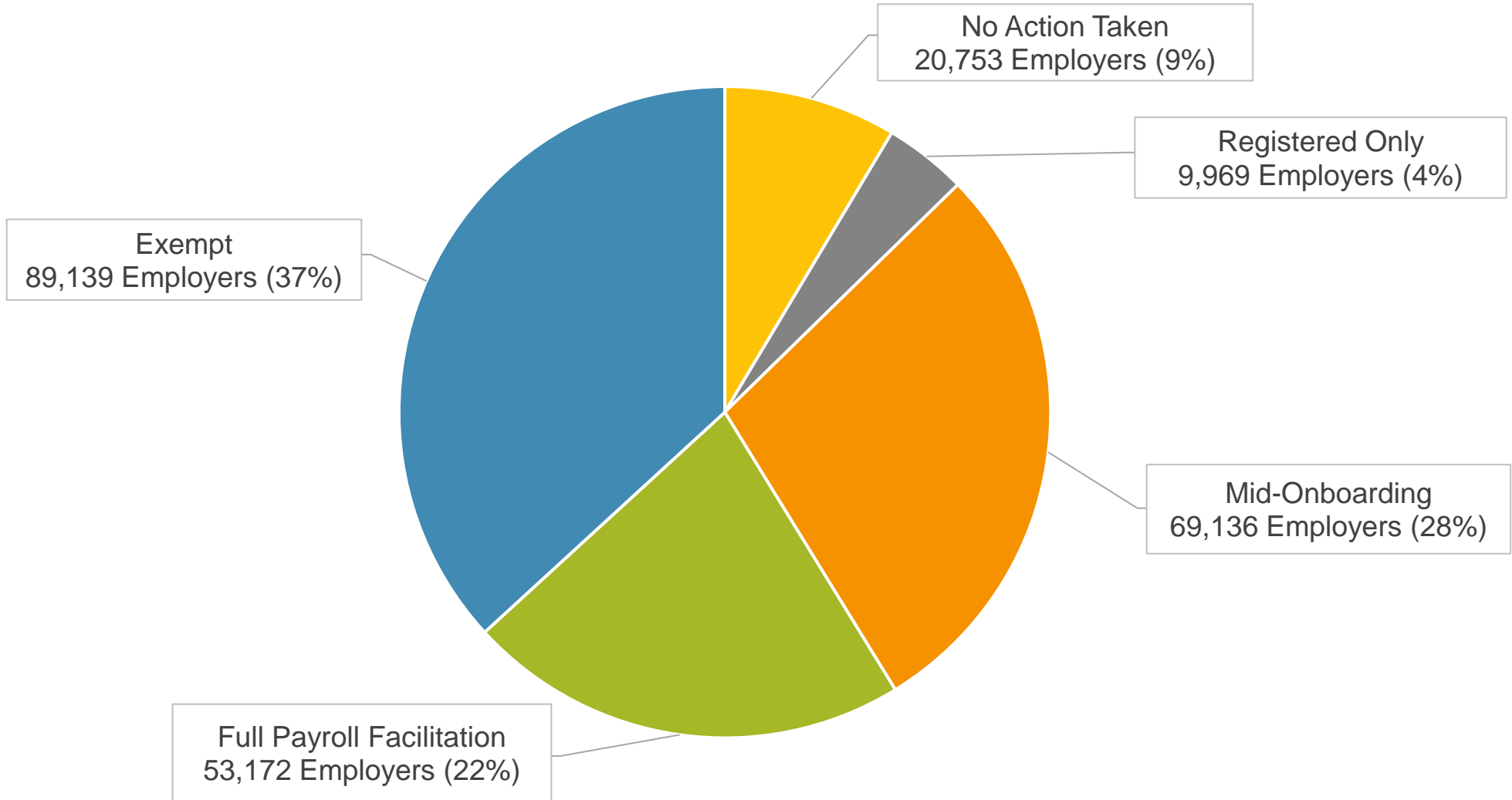
As of 11/30/24



The Program operated a limited scope pilot from November 2018 through June 2019 prior to full statewide launch on July 1, 2019.

# Chart 7: Status of Post-Deadline Employers

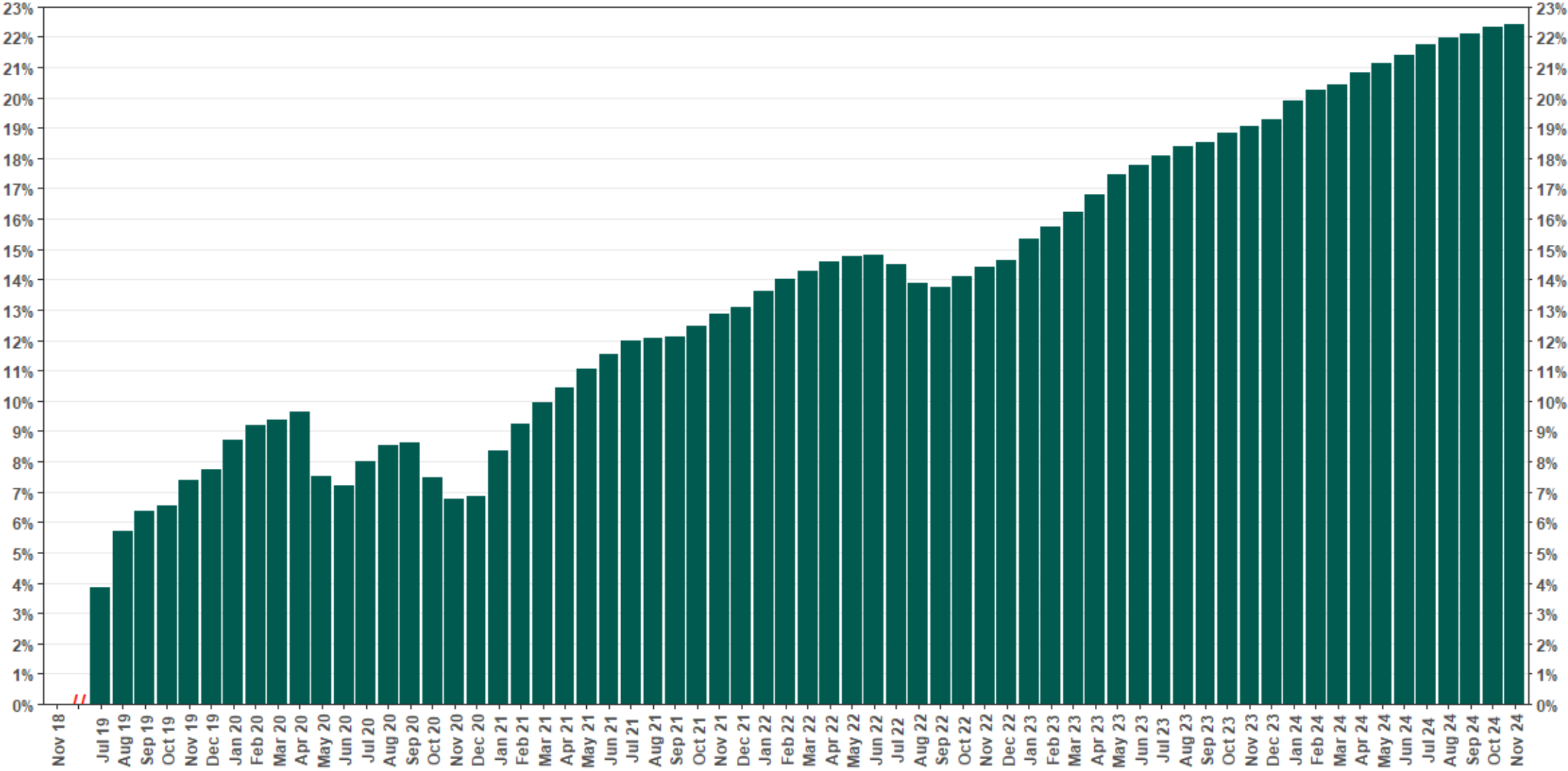
As of 11/30/24





# Chart 8: Accounts w/ Full Withdrawal as % of Payroll Contributing Accounts

As of 11/30/24



The Program operated a limited scope pilot from November 2018 through June 2019 prior to full statewide launch on July 1, 2019.